



**CDRI - Cambodia's leading  
independent development policy  
research institute**

# **A Basic Consumer Price Index for Cambodia 1993–2009**



**Keith CARPENTER  
with assistance from PON Dorina**

**Working Paper Series No. 67**

**March 2012**

**A CDRI Publication**



# **A Basic Consumer Price Index for Cambodia 1993–2009**

**CDRI Working Paper Series No. 67**

**Keith CARPENTER**  
**with assistance from PON Dorina**



**CDRI**

Cambodia's leading independent development policy research institute

Phnom Penh, March 2012

© 2012 CDRI - Cambodia's leading independent development policy research institute

All rights reserved. No part of this publication may be reproduced, stored in a retrieval system or transmitted in any form or by any means—electronic, mechanical, photocopying, recording, or otherwise—without the written permission of CDRI.

ISBN-10: 99950-52-63-8

## **A Basic Consumer Price Index for Cambodia 1993–2009**

### **CDRI Working Paper Series No. 67**

**Dr Keith CARPENTER** was a research adviser at CDRI in 2006 and 2007; a volunteer funded by AusAID through Australian Business Volunteers.

**PON Dorina** is a research assistant at CDRI.

*Responsibility for ideas, facts and opinions presented in this research paper rests solely with the authors. Their opinions and interpretations do not necessarily reflect the views of the Cambodia Development Resource Institute.*

### **CDRI**

☎ 56, Street 315, Tuol Kork  
✉ PO Box 622, Phnom Penh, Cambodia  
☎ (+855-23) 881-384/881-701/881-916/883-603  
☎ (+855-23) 880-734  
E-mail: [cdri@cdri.org.kh](mailto:cdri@cdri.org.kh)  
Website: <http://www.cdri.org.kh>

Layout and cover design: OUM Chantha  
Printed and bound in Cambodia by T & S Printing Phnom Penh

## Table of Contents

Abbreviations.....	iv
Acknowledgements.....	v
Abstract.....	vii
A. Introduction.....	1
B. Issues with Existing Provincial Price Index Calculations.....	1
C. Corrective Measures.....	2
D. General Approach.....	3
E. Expenditure Weights.....	5
F. Base Prices.....	7
G. Data.....	8
H. Population Weights.....	8
I. A Provincial Basic Consumer Price Index.....	11
J. A Basic Consumer Price Index for Phnom Penh.....	11
K. A National Basic Consumer Price Index.....	12
L. Some Observations.....	12
M. Conclusion.....	19
References.....	21
Appendices.....	22
Appendix 1: Provinces, markets and data availability.....	22
Appendix 2: Prices collected.....	23
Appendix 3: Expenditure weights.....	24
Appendix 4: Rebasing a Basic Consumer Price Index.....	26
Appendix 5: Construction of 1994 Base Prices.....	28
Appendix 6: Census Results.....	28
Appendix 7: Population Weights.....	30
Appendix 8: Basic Price Indices for Cambodia:1993–2000, Original Data.....	31
Appendix 9: Basic Price Indices for Cambodia:1999–2007, Original Data.....	39
Appendix 10: Basic Price Indices for Cambodia:2005–2009, Original Data.....	47
Appendix 11: Basic Price Indices for Cambodia: 1993–2009, Linked Data.....	52
Appendix 12: Phnom Penh Basic Consumer Price Index: Commodities used in 1994 and 2000 base indices.....	66
Appendix 13: Phnom Penh Basic Consumer Price Index: Commodities Used in 2006 Base Index.....	67
CDRI Working Paper Series.....	68

## **Abbreviations**

CDRI	Cambodia Development Resource Institute
CIPS	Cambodian Inter-censal Population Survey
CPI	Consumer Price Index
CSES	Cambodia Socio-economic Survey
GRET	Groupe de Recherche et d’Echange Technologiques
NIS	National Institute of Statistics
MOP	Ministry of Planning

## Acknowledgements

The production of this Working Paper would not have been possible without the diligence and commitment of many CDRI staff who have organised the collection and analysis of the provincial price data over the years since these data were first collected in 1993. These data were provided to CDRI by informants in the provinces who gathered data in their local markets on a monthly basis over this period. Special thanks are due to Pon Dorina who has managed this process in recent years.

The author would like to thank Dr Hossein Jalilian, a former Research Director at CDRI, for his encouragement to persevere with the analysis that gave rise to this Working Paper. Thanks are also due to CDRI senior management for providing the funds to permit the publication of this Working Paper.

*Keith Carpenter  
Sydney NSW Australia  
March 2012*





## **Abstract**

This paper calculates basic consumer price indices for Cambodia for 1993-2009, using data gathered in provincial markets, using the Phnom Penh Consumer Price Index base periods of 1994, 2000 and 2006 of the Cambodian National Institute of Statistics (NIS). The key output of the paper is a National Basic Consumer Price Index for Cambodia.

The paper began as a review of the basic price indices calculated by CDRI using consumer price data collected since 1993 for 12 provincial urban and rural markets. The original basic price indices had a number of shortcomings; this paper corrects those shortcomings and extends the analysis to calculate a Provincial Basic Consumer Price Index for Cambodia for 1993-2009.

Data from the NIS Consumer Price Index for Phnom Penh is used to calculate a Basic Consumer Price Index for Phnom Penh. This latter index is combined with the Provincial Basic Price Index, using appropriate population weights, to calculate a National Basic Consumer Price Index, a measure of prices paid by the poor for basic consumer items. The text of the paper concludes with a discussion of price movements over the period 1993-2009.

The appendices tabulate basic consumer price indices for nine provincial urban markets, three provincial rural markets and for Phnom Penh for 1993–2000, 1999–2007 and 2005–2009, together with urban (excluding Phnom Penh), rural, provincial and national basic consumer price indices for the same periods. Also tabulated are linked basic price indices, using a 2006 base, for the same markets and for the urban, rural, provincial and national price indices for 1993–2009.



## A. Introduction

In 1995, CDRI published Working Paper No 1: *Construction of a Consumer Price Index for Cambodia* (Kannan 1996). That paper examined some general issues relating to consumer price indices, looked at the price indices then available in Cambodia and concluded with a discussion of some practical issues related to Cambodian price indices. The paper recommended, *inter alia*, that CDRI no longer needed to collect consumer price data in Phnom Penh but that it should devote its efforts to collecting consumer prices in the provinces to build a national price index.

Since 1995 CDRI has continued its collection of consumer price data in the provinces on a monthly basis. Data are currently collected in 12 provincial markets, i.e. nine urban markets and three rural markets. The price data collected cover 14 consumer items, including the gold price and the riel-United States dollar exchange rate; the latter two items are not used in the price indices. Given the limited range of commodities included in the index, the resultant indices are more properly described as *basic price indices* rather than true consumer price indices. The range of goods prices collected do, however, give an indication of the prices being faced by the poor, so they are a useful indicator of the living standards of the poor, particularly the rural poor. Monthly consumer price data are available from 1993 for seven markets: six urban and one rural. Some of these data have been either collected only intermittently or were possibly lost or misplaced after collection, but a continuous price data series is available for five provincial urban markets and one provincial rural market.

Since 1994, the National Institute of Statistics (NIS) has published three series of consumer price indices, with bases in 1994, 2000 and 2006. This paper uses CDRI data and NIS data to construct a provincial basic consumer price index for Cambodia. The NIS used to publish current prices for the items in its consumer price index for Phnom Penh each month prior to January 2008. Subsequently, the NIS has published price relatives for a range of goods similar to those for which CDRI has collected prices in provincial markets. Both sets of NIS data have been used to construct a basic consumer price index for Phnom Penh that is comparable to the provincial basic consumer price index. These two indices can be combined, using appropriate population weights, to construct a national basic consumer price index for Cambodia.

This paper provides basic price indices for Cambodia using original data for the base periods of 1994, 2000 and 2006. In addition, it provides a linked basic price index series to cover the period from July 1993 to December 2009 using the 2006 base index.

## B. Issues with Existing Provincial Price Index Calculations

An investigation of the CDRI approach to the collection of provincial consumer prices and the subsequent calculation of consumer price indices in mid-2006 revealed a number of problems with the existing work.

- The time series for provincial consumer prices was inadequate due to either prices not being collected or not being available and missing price data, due to data apparently being lost either when staff changed or when computer systems were changed.
- Despite the markets being either urban or rural, all the price indices then being constructed used only urban expenditure weights.

- The NIS in early 2001 moved the Phnom Penh CPI base from July-September 1994 to July-December 2000. At the same time, the base prices were changed from a July-September 1994 average to a July-December 2000 average. The NIS also changed the base weights from 1994 to 1999 to take advantage of data available from the 1999 Cambodian Socio-economic Survey (CSES 1999).
  - While the CDRI indices were rebased to December 2000 at the time of the NIS change, no change was made to the weights being used, nor were the base prices updated
- Three items in the price indices contained subcategories. The prices used for the items in those three categories in the price indices were a simple average of the prices of the items in each subcategory. No attempt seems to have been made to use appropriate weights for spending on the subcategories. The effect of this approach is to assume that the spending on each item in these subcategories is equal and that the goods are nearly perfect substitutes for each other. The three categories and their components are:
  - Meat, poultry, fish
    - . Fresh fish (*Trey Ros*)
    - . Pork, 1<sup>st</sup> quality
    - . Beef, 1<sup>st</sup> quality
  - Vegetables
    - . Cucumbers
    - . Wax gourds
  - Fuel
    - . Charcoal
    - . Kerosene
- Some base prices appeared suspect. The original base prices were an average of prices obtaining in July, August and September 1994, which is the approach followed by NIS in constructing the Phnom Penh CPI. In July 1995, six additional provinces were added to the list of provinces where price data were being collected on a monthly basis. For these six provinces, the base prices used were identical and their source was not clear, neither for the province nor for the time period.

This working paper had its genesis in a project to improve the provincial CPI data set and to produce a consistent data series for the provincial CPI. The ultimate aim of the project was to construct a national basic consumer price index.

**Note:** In this paper the terms *basic consumer price index*, *basic price index* and *basic index* are all used interchangeably to refer to a price index that is constructed using a limited range of commodities purchased by consumers.

## C. Corrective Measures

The following steps were undertaken to rectify the problems uncovered in the initial investigation of the provincial price indices.

1. Considerable efforts were devoted to building a consistent and complete set of price data for each province. Data were assembled from existing computer files and from hard copy data, where available. The data was also cleaned, as appropriate. If other non-CDRI sources of data were found, these data were also added to the data set, if

that data appeared comparable to the data already available. Most of this effort went into building the price database for data prior to 1998, because price data subsequent to 1998 have been collected and stored appropriately.

2. Appropriate expenditure weights, either urban or rural, were applied to prices collected in each market when calculating the price indices.
3. For data collected after 1999, the expenditure weights used for each of the price indices were based on the same CSES data as were used by the NIS, so as to follow the NIS approach.
4. To align with NIS practice, for data collected subsequently to 1999, the base prices were recalculated based on average prices applying in the same base periods the NIS used. The effect of this change, together with that noted above for the reweighting of the indices, is to rebase the provincial price indices in each period to the same base as used by NIS.
5. Additional expenditure data were obtained from the NIS for CSES 1994, CSES 1999 and CSES 2004 to weight expenditure properly on the following items:
  - Fresh fish (Trey Ros)
  - Pork, 1<sup>st</sup> quality
  - Beef, 1<sup>st</sup> quality
  - Cucumbers
  - Wax gourds
  - Charcoal
  - Kerosene
6. Where possible, base price data for 1994 were collected and average prices calculated for the six provinces that were apparently using the same base prices; these data were apparently 1995 prices but their provenance is not clear. Data for 1994 do not exist for all these provinces; the remaining provinces were dealt with as outlined below in the section entitled “Base prices”.

## **D. General Approach**

The aim of this project was to construct a national basic consumer price index for Cambodia that would be broadly comparable with the NIS consumer price index for Phnom Penh. This means that the national index would use similar base periods to the Phnom Penh CPI.

The approach followed was first to construct basic price indices for each market where consumer prices were collected. These indices were initially based on CSES 1994 expenditure weights and July-September 1994 average prices. Later, when the NIS changed the base period for the Phnom Penh CPI, to update the Phnom Penh CPI, the expenditure weights were changed to weights based on CSES 1999 and then on CSES 2004, using average prices for July-December 2000 and October-December 2006 as appropriate.

The price index formula used for each index is the standard weighted price relative index using expenditure weights:

$$I_t = \sum_{i=1}^n w_i \left( \frac{p_{it}}{p_{i0}} \right)$$

where:  $I_t$  price index at time  $t$ ;  
 $i$   $i$ th good;  
 $n$  number of goods in the index;  
 $w_i$  weight of  $i$ th good in the index;  
 $p_{i0}$  base price of  $i$ th good (i.e. at time 0); and  
 $p_{it}$  price of  $i$ th good at time  $t$ .

The individual market's price indices, taken to be indicative of prices in their respective provinces, are combined to construct urban and rural basic consumer price indices, depending on the type of market where the prices were collected. The individual markets were weighted by their province's share of the national urban or rural population, according to whether they were urban or rural markets. Table 1 shows the provincial population coverage of the shares of the total urban and rural populations for the urban and rural markets which were used to construct the basic price indices.

Table 1: Urban and Rural Population Shares Markets Used to Construct Basic Price Indices (%)

Year	Source	Urban	Urban (Excluding Phnom Penh Urban)	Rural	Phnom Penh (Share of total)
1994	1998 Census	34.42	50.44	24.00	4.97
2000	Interpolation	32.91	50.56	23.96	5.83
2006	Interpolation	28.37	51.02	23.81	8.42
2008	2008 Census	26.86	51.20	23.77	9.28

The provinces containing the urban markets used to collect consumer prices cover around 30 percent of Cambodia's urban population, (50 percent if Phnom Penh municipality's urban population is excluded) and for the rural markets the coverage is about 24 percent of the rural population (including Phnom Penh municipality's rural population).

The urban and rural basic consumer price indices are combined to produce a provincial basic consumer price index, weighting the urban and rural indices by the respective shares of Cambodia's population. For the construction of the provincial price index, "urban" refers only to what the NIS classifies as "other urban"; i.e. it excludes the urban population of Phnom Penh municipality.

Each month, until December 2007, the NIS reported the average prices of commodities entering into the Phnom Penh CPI in *Consumer Price Index, Phnom Penh*. From these listed prices, a time series of prices for the same items that enter into the urban and rural basic consumer price indices can be constructed. These prices can be used to construct a basic consumer price index for Phnom Penh that is comparable to the various provincial market basic consumer price indices, using appropriate CSES weights. This index can be combined with the provincial basic consumer price index to build a national basic consumer price index, using population shares as weights. The NIS Phnom Penh CPI covers from 5 percent (1998 census) to 9 percent (2008 census) of Cambodia's total population. The constructed Phnom Penh basic consumer price index can be compared with the NIS Phnom Penh CPI to observe any divergence in the price changes between the two baskets of goods.

Subsequently to January 2008, NIS price relatives for the same goods that enter into the CDRI basic price indices can be used to construct a Phnom Penh basic consumer price index that is comparable to the other CDRI basic price indices.

The final step in the index-building process combines all the available basic price indices with differing base periods into a single linked series of basic price indices with a common base in the fourth quarter of 2006.

## **E. Expenditure Weights**

CDRI has consistently collected provincial price data on 14 consumer items. These items, with the exception of the gold price and the riel-US dollar exchange rate, were used to construct the various provincial basic consumer price indices. The items used and their units are listed in Appendix 2. The items are basic goods needed for daily living, so the resultant price indices are more properly called *basic price indices* rather than true *consumer price indices*. A consumer price index would cover all items purchased by a typical or average consumer; the NIS CPI for Phnom Penh is of this form. The price indices constructed by CDRI are intended to be basic price indices only, not consumer price indices, under this nomenclature.

The expenditure weights used for the 1994- and 2000-based basic consumer price indices were taken from the reports of the appropriate CSES, i.e. CSES 1994 and CSES 1999 (NIS 1995, Tables C1, p.103 and C2, p.104; NIS 2000, Table H4, p.125). The results of the expenditure surveys were reported under four headings:

1. Cambodia
2. Phnom Penh
3. Other Urban
4. Rural

The expenditure weights used to construct the basic consumer price indices with a 2006 base were taken from CSES 2004. The full results of this CSES have not been published, and the expenditure weights used to calculate the basic price indices were obtained directly from the NIS. The results of the expenditure survey were reported under three headings:

1. Phnom Penh
2. Other Urban
3. Rural

From these expenditure survey data, appropriate spending weights were constructed for the provincial consumer price indices. The expenditure pattern shown under “other urban” was used for provincial urban markets, while that for “rural” was used for rural markets. The expenditure weights used are given in Appendix 3.

For each CSES, the results of the expenditure survey were reported slightly differently. Consistency in classification was maintained by examining the questionnaires used in each survey and classifying outputs in a consistent manner so that the items used by CDRI matched the categories used in the questionnaires and the outputs. For those items listed above as subcategories, the expenditure data were obtained directly from the NIS for each expenditure survey.

For CSES 1994, expenditure data were reported in terms of average monthly household expenditure. Table 2 lists the spending on the items used as a proportion of the total spending on all items and for sub-classifications of total spending. Thus for “rural”, the items used in the basic price index covered 68 percent of all spending, 82 percent of spending on food, beverages and tobacco, 87 percent of spending on food alone and 37 percent of spending on non-food items.

Table 2: CSES 1994 Expenditure Weights: Coverage of Items as Proportion of Total Spending on Those Items (%)

<b>Spending</b>	<b>Cambodia</b>	<b>Phnom Penh</b>	<b>Other Urban</b>	<b>Rural</b>
All items	62.84	49.18	55.54	67.68
Food, beverages & tobacco	79.33	66.84	75.02	82.30
Food only	84.21	71.97	80.84	86.94
Non-food	34.93	32.77	29.30	37.09

For CSES 1999, expenditure data were reported in terms of average monthly per capita consumption. Table 3 lists the spending on the items used as a proportion of the total spending on all items and for sub-classifications of total spending.

Table 3: CSES 1999 Expenditure Weights: Coverage of Items as Proportion of Total Spending on Those Items (%)

<b>Spending</b>	<b>Cambodia</b>	<b>Phnom Penh</b>	<b>Other Urban</b>	<b>Rural</b>
All items	51.86	37.93	47.78	57.71
Food, beverages & tobacco	67.44	57.42	64.58	69.99
Food only	73.22	64.20	70.99	75.38
Non-food	27.37	25.14	24.20	29.83

For CSES 2004, expenditure data were reported in terms of household monthly expenditure. Table 4 lists the spending on the items used as a proportion of the total spending on all items and for sub-classifications of total spending.

Table 4: CSES 2004 Expenditure Weights: Coverage of Items as Proportion of Total Spending on Those Items (%)

<b>Spending</b>	<b>Cambodia</b>	<b>Phnom Penh</b>	<b>Other Urban</b>	<b>Rural</b>
All items	49.17	42.42	52.45	64.31
Food, beverages & tobacco	76.28	73.63	75.57	82.48
Food only	90.06	89.25	90.00	91.58
Non-food	23.85	20.55	27.78	31.48



## F. Base Prices

For the price indices with a 1994 base, the base period is July to September 1994, the same base period used by the NIS. Original prices are available for the following markets:

- Urban
  - Battambang
  - Kompong Chhnang
  - Kompong Thom
  - Kampot
  - Prey Veng
- Rural
  - Kandal (Rice, and Meat, Poultry, Fish prices not available for July and August)
  - Takeo (No charcoal prices)

Kompong Speu, a rural market, did not initially have its own base prices. For base prices, that provincial index used the same base prices as the five urban markets noted below. Some Ministry of Commerce data are available for Kompong Speu for April to July 1994 that cover most of the items used in the basic price indices. These data are most likely based on urban markets, while CDRI collected prices in a rural market in Kompong Speu. A judgement was made that these Ministry of Commerce prices were as good an estimate of prices prevailing in Kompong Speu in 1994 as was likely to be obtained, so these Ministry of Commerce July 1994 prices were used as the base prices for the basic consumer price index for Kompong Speu. The Ministry of Commerce data did not have prices for wax gourds; how this omission was handled is discussed below.

Original prices for 1994 were not available for the following markets, which are all urban markets:

- Kompong Cham
- Kratie
- Ratanakkiri
- Siem Reap
- Svay Rieng

The approach followed with these five markets was to use average prices obtaining in July to September 1995 for each market but to deflate those prices back to a 1994 base. The July to September period was chosen so as to retain the same seasonal influences that could be expected to be operating in the 1994 base period. The method of deflation was to take the average price for each item in the index in the period July to September 1995 for each of the five original urban markets for which the 1994 prices were available and to determine the change since July to September 1994. Each change was then weighted by the population shares of each of the five original markets to obtain deflators for each item appearing in the index. The 1995 average prices of each item for the five markets of interest were then deflated back to 1994, and these deflated prices were used as the base prices for these same five markets. Note particularly that weighted deflators were constructed for each item in the index and that the deflators were applied to each individual average price for the items appearing in the index.

A version of this approach was also applied to prices of particular items in Prey Veng and Kompong Speu. For Prey Veng, GRET did not initially collect prices for wax gourds and bananas. The earliest prices for Prey Veng that were available for these items were in

1996, so the average prices for July to September 1996 for wax gourds and bananas were deflated by the weighted average change of each item since 1994, as outlined above for the other prices. For Kompong Speu, the Ministry of Commerce data used did not have prices for wax gourds, so a base price was calculated using July to September 1995 prices deflated by the population-weighted change in wax gourd prices observed in Kandal and Takeo, the other two rural markets used.

The approach followed for 1994 base prices is summarised in Appendix 5.

For the price indices with a 2000 and 2006 base, the NIS used average prices for July to December 2000 and for October to December 2006 as the base prices respectively. This same practice has been followed in building the CDRI basic consumer price index. Price data exist for each market monitored by CDRI for the period July to December 2000 and for the period October to December 2006, so the construction of the base prices to use for the 2000 and 2006 base indices was straightforward.

## **G. Data**

For various periods, there were missing data. These problems were dealt with in the following manner:

- Missing prices for particular index items in any period:
  - The missing prices were interpolated using a straight line interpolation method.
  - Prices were not interpolated if the gap in the data was greater than four months.
- A series of missing prices for periods longer than four months but with most prices for the items in the index being reported:
  - The index weights were adjusted to remove the items with the missing prices from the index for the duration of the gap in the data.
- No price data available at all for a particular market and time period:
  - Where the price data were missing for periods of up to and including four months, the gaps in the index were filled by a straight line interpolation of the index.
  - For price data that were not available for periods of five months or longer, a gap was left in the index for that period.

## **H. Population Weights**

To build the urban, rural, provincial and national basic consumer price indices from the provincial market basic price indices, the individual market indices were weighted by the share of the Cambodian population in that province, either urban or rural. Thus for urban markets, the weight used was that province's urban population share of the total urban population of Cambodia, excluding the Phnom Penh municipality's urban population. The same approach was used for rural markets, but including the Phnom Penh municipality's rural population. The assumption is that the prices in the particular market used by CDRI are representative of prices in the same type of market in the rest of the province.

Two aggregate basic price indices were constructed first: an urban index and a rural index. These indices used the appropriate individual market indices as their inputs. Where data for individual markets were not available, the total weights were adjusted by removing those markets from the weighting system. The need to do this occurs particularly with the indices with a 1994 base, when data on some markets are either not available or are available only for

some time periods. This problem was not as acute for the indices with 2000 and 2006 bases as price data are consistently available or the missing individual indices can be interpolated. Price data are not available for Kompong Speu, a rural market, from January 1999 to March 2000, inclusive, so the rural weights were adjusted for then non-availability of those data for that period.

Phnom Penh presents a special case. For some reporting purposes, the NIS classifies Cambodia's population locations using three broad classifications: Phnom Penh, other urban and rural. This approach is used in reporting the CSES results. For census purposes, Phnom Penh is further categorised into urban and rural. In this paper, the approach used is to subdivide the Phnom Penh municipality's population into the urban and rural census categories, with the NIS CPI being assumed to apply only to the urban population and the rural population of the municipality being included with the rest of the rural population of Cambodia.

This classification issue becomes important in constructing a provincial basic consumer price index from the urban and rural basic price indices. The provincial basic price index was constructed by weighting the urban index by the "other urban" share of Cambodia's population and weighting the rural index by the "rural" share. For the purposes of this provincial index, the "rural" population of Phnom Penh was included in the rural share. There may be some objection to this approach, as it could be argued that the prices in the rural parts of Phnom Penh municipality on the outskirts of the city proper are more likely to be influenced by prices in urban Phnom Penh than by prices in the provinces, either urban or rural. A judgement has been made for this paper that the Phnom Penh rural portion of the population more properly belongs with the provincial rural population, when constructing a provincial basic price index, so that the municipality's rural population shares the pricing characteristics of those other rural areas. This decision also affects the construction of a national basic consumer price index.

The national basic consumer price index is constructed by weighting the provincial basic consumer price index and the Phnom Penh Basic consumer price index by their respective population shares. The construction of the Phnom Penh basic consumer price index is discussed below.

Table 5 shows how the components of the population were used to construct the various basic consumer price indices used in this paper

Table 5: Components of Basic Consumer Price Indices

Census categories	Basic Price Indices				
	Urban	Rural	Provincial	Phnom Penh	National
Urban less Phnom Penh Urban	X		X		X
Phnom Penh Urban				X	X
Rural less Phnom Penh Rural		X	X		X
Phnom Penh Rural		X	X		X
1998 Census Shares (%)	10.67	84.36	95.03	4.97	100.00
2008 Census Shares (%)	10.23	80.49	90.72	9.28	100.00

At the time this paper was prepared, the data from both the 1998 and 2008 population censuses were available, and these data were used to weight the components of the urban, rural, provincial and national basic price indices. At the time of the 1998 census, then existing security concerns meant that some parts of the country were not enumerated, namely the rural parts of Preah Sihanouk province and Kep and Pailin municipalities. The Cambodian Inter-

censal Population Survey 2004 (CIPS 2004—NIS 2005) estimated that these areas contained 45,000 people. For the purposes of constructing the basic price indices, these 45,000 people were added to the rural population and to the total population for the 1998 census totals; this adjustment has a marginal impact on the urban-rural split and provincial-Phnom Penh split. No account was taken of the under counting in the 1998 census (estimated at 1.78 percent) nor of the Cambodian refugees in Thailand (estimated at 60,000). The relevant CIPS results are shown in Appendix 6.

Census results are available for 1998 and 2008, divided into urban and rural populations for each province. With two sets of census data, it is possible to interpolate population values for the intervening years, assuming that the rate of change of population was spread evenly over the inter-censal period. An appropriate provincial population share was used for each index base period in constructing the appropriate basic price indices. For the 1994 base period, the 1998 census shares were used; for the 2000 and 2006 base periods, the interpolated population shares for 2000 and 2006 were used.

The population weights for each provincial market used to construct urban, rural, provincial and national basic consumer price indices are shown in Table 6.

Table 6: Urban and Rural Population Shares for each Index Base (%)

			Population share		
	Index base		1994	2000	2006
	Population base		1998	2000	2006
	Population share source		1998 Census	Interpolation	Interpolation
Province Number	Province	Type	1994	2000	2006
02	Battambang	Urban	7.79	7.62	7.09
03	Kompong Cham	Urban	2.53	2.93	4.12
04	Kompong Chhnang	Urban	2.32	2.19	1.78
06	Kompong Thom	Urban	3.68	Not included	
07	Kampot	Urban	1.84	1.85	1.85
10	Kratie	Urban	4.41	3.80	1.98
14	Prey Veng	Urban	3.07	2.71	1.63
16	Ratanakkiri	Urban	0.95	0.91	0.78
17	Siem Reap	Urban	6.66	6.66	6.66
20	Svay Rieng	Urban	1.18	1.08	0.76
05	Kompong Speu	Rural	5.75	5.83	6.07
08	Kandal	Rural	10.50	10.38	10.03
21	Takeo	Rural	7.75	7.74	7.71
12	Phnom Penh	Urban	4.97	5.83	8.42
Share of total population	Urban less Phnom Penh Urban		10.67	10.58	10.32
	Rural		84.36	83.59	81.26
	Provinces		<b>95.03</b>	<b>94.17</b>	<b>91.58</b>
	Phnom Penh Urban		4.97	5.83	8.42
	Check		<b>100.00</b>	<b>100.00</b>	<b>100.00</b>

## **I. A Provincial Basic Consumer Price Index**

All the work discussed above culminated in the calculation of basic consumer price indices for each market, either urban or rural, where CDRI collected prices of the 12 basic commodities. These individual price indices were then combined to produce either urban or rural basic consumer price indices. The weights used were the population weights for each province, as noted above. The population weights are shown in Appendix 7.

In a subsequent step, the urban and rural basic consumer price indices were combined into a provincial basic consumer price index using the population shares of the “other urban” and rural populations as the weights.

The full output for each of the basic price indices is shown in Appendices 8 to 11. Each appendix is divided into two parts: Part A gives the indices for each provincial market plus the CDRI-calculated basic consumer price index for Phnom Penh (see below); Part B gives the urban, rural, provincial and national basic consumer price indices, and it also includes the NIS consumer price index for Phnom Penh for comparison purposes.

- Appendix 8 contains basic price indices for each provincial market plus urban, rural and provincial basic consumer price indices for the period from July 1993 to December 2000. The base period of these indices is July to September 1994, with the base being set at 100. Data are not available for all markets but all the available data are included in this appendix.
- Appendix 9 contains basic price indices for each provincial market plus urban, rural and provincial basic consumer price indices for the period from January 1999 to December 2007. These indices are based on the period July to December 2000, with the base being set at 100.
- Appendix 10 contains basic price indices for each provincial market plus urban, rural and provincial basic consumer price indices for the period from January 2005 to December 2009. The base period of these indices is October to December 2006, with the base being set at 100.
- Appendix 11 contains basic price indices for each provincial market plus urban, rural and provincial basic consumer price indices for the period from July 1993 to December 2009, with the basic price index data from previous indices (those with bases in 1994 and 2000) being linked and placed on a common base period of October to December 2006 with the base again being set at 100.

## **J. A Basic Consumer Price Index for Phnom Penh**

The price indices calculated for each provincial market are basic price indices, covering only 12 basic consumer items. The NIS consumer price index is a comprehensive consumer price index currently covering some 225 items, of which 82 are food and 93 are food, beverages and tobacco. The calculation of a national basic price index that includes data from Phnom Penh comparable to that collected in the provincial markets requires the calculation of a basic consumer price index for Phnom Penh.

Each month, until December 2007, when the Phnom Penh CPI was published by the NIS, the published output also included the current prices for all the consumer items sampled by the NIS for its CPI. These price data can be used to construct a basic consumer price index for Phnom Penh. The items from the NIS CPI data used to construct a basic consumer price index for Phnom Penh are shown in Appendix 12.

In January 2008 the NIS changed the method of presenting the Phnom Penh CPI. The base of the index was changed to October to December 2006, and the prices of goods making up the index were no longer provided as part of the output. Instead price relatives for groups of goods were provided. This approach provides a degree of flexibility to the NIS, because the individual goods used in the CPI are no longer fixed, though the weights for the various subcategories of goods are fixed. For the period subsequent to January 2008, selected sub-indices from the NIS CPI that aligned with the goods prices collected by CDRI for the provincial market indices were used to calculate a basic price index for Phnom Penh. The sub-indices used from the NIS CPI post-2008 and their relationship to the items used for the CDRI indices are shown in Appendix 13.

Most items for which prices are collected by the NIS are similar to those collected by CDRI. The exception is wax gourds; NIS does not collect prices for “wax gourd” (*Benincasa hispida*). The nearest substitute item for which prices are collected by the NIS is “ridge gourd” (*Luffa acutangula*), also known as vegetable gourd and *sze gwa*. The ridge gourd prices from the NIS were used in constructing the basic consumer price index for Phnom Penh, using the same weights as were used for wax gourds. The information available suggests that ridge gourd is the most suitable substitute for wax gourd that is available among the items for which the NIS collects prices in Phnom Penh; also, it is widely used in the countryside. The other possible vegetable to substitute for wax gourd is “bitter gourd” (*Momordica charantia*), also known as bitter melon, bitter cucumber and *fu gwa*, but this is used mainly by the generally more affluent urban dwellers.

The NIS published prices are available only from October 1994; the NIS CPI is based on the average price level in the three months July to September 1994. As part of the data gathering to construct the provincial basic consumer price index, some additional prices were found for earlier periods; these prices had been collected by the Ministry of Commerce and by the National Bank of Cambodia before the NIS took over the compilation of consumer price indices. Taken together, these additional prices covered most but not all of the items entering into the CDRI basic price index for Phnom Penh. These additional prices were used to extend the basic consumer price index back to January 1993, with appropriate changes in weights to allow for the missing items.

The Phnom Penh basic consumer price index is presented in Part A of Appendices 8 to 11.

## **K. A National Basic Consumer Price Index**

The CDRI provincial basic consumer price index was combined with the CDRI-constructed Phnom Penh basic consumer price index to construct a national basic consumer price index. The weights used were the appropriate population shares for the provinces and Phnom Penh municipality’s urban population. The national basic consumer price index is shown in Part B of Appendices 8 to 11.

## **L. Some Observations**

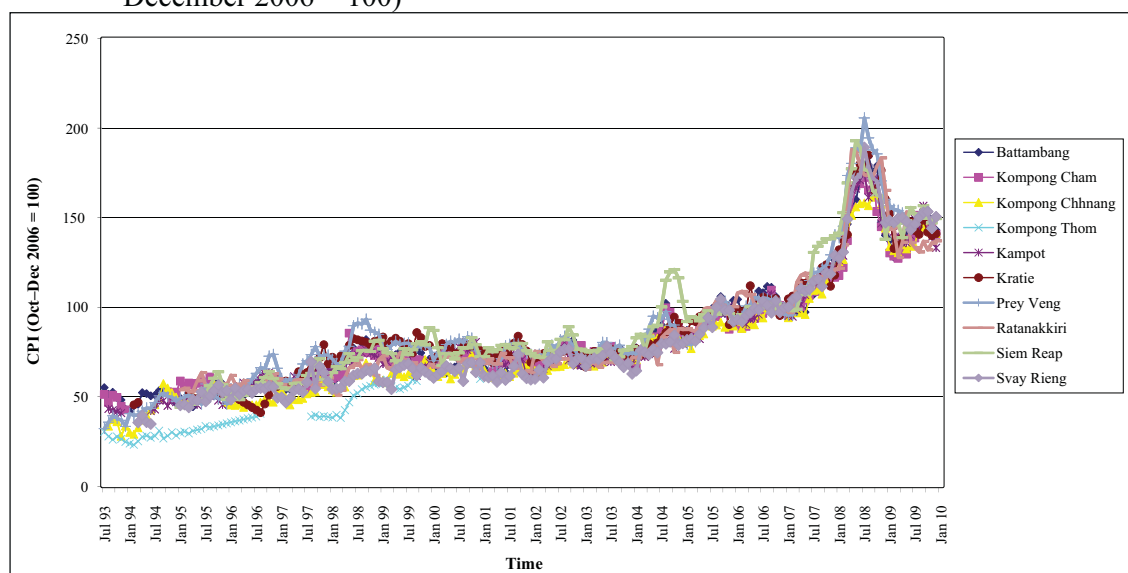
This section of the paper draws out some broad trends that emerge from the provincial basic consumer price data by first presenting graphs that show the data for all the basic price indices that were calculated. Then there is a discussion of the various episodes of price movements since 1993 by looking at the changes in the national basic price index. This section



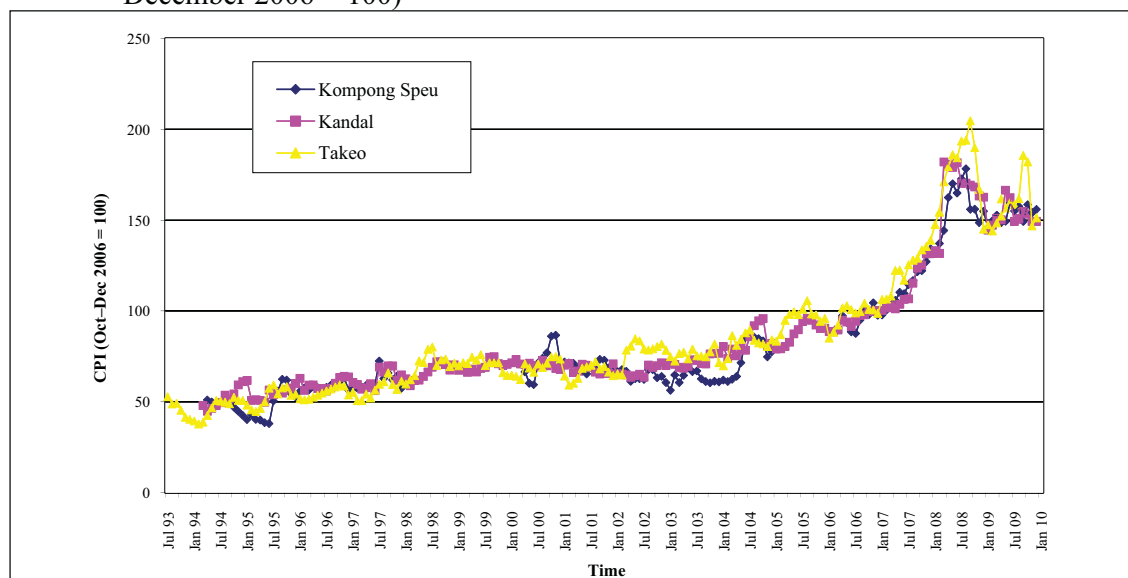
concludes with a discussion of the movements in the urban and rural basic consumer price indices relative to the Phnom Penh basic consumer price index.

In examining the movements in the price indices, it needs to be borne in mind that a particular index number at a point in time relates only to the base of that index. Comparing a price index number to its base tells only whether overall prices have risen or fallen relative to the base; if the two time periods are known, then it is also possible to determine the rate of change of prices. It is not possible to make inter-index comparisons where the indices have the same base.

Graph 1: Provincial Basic Consumer Price Indices 1993–2009: Urban Markets (October–December 2006 = 100)



Graph 2: Provincial Basic Consumer Price Indices 1993–2009: Rural Markets (October–December 2006 = 100)

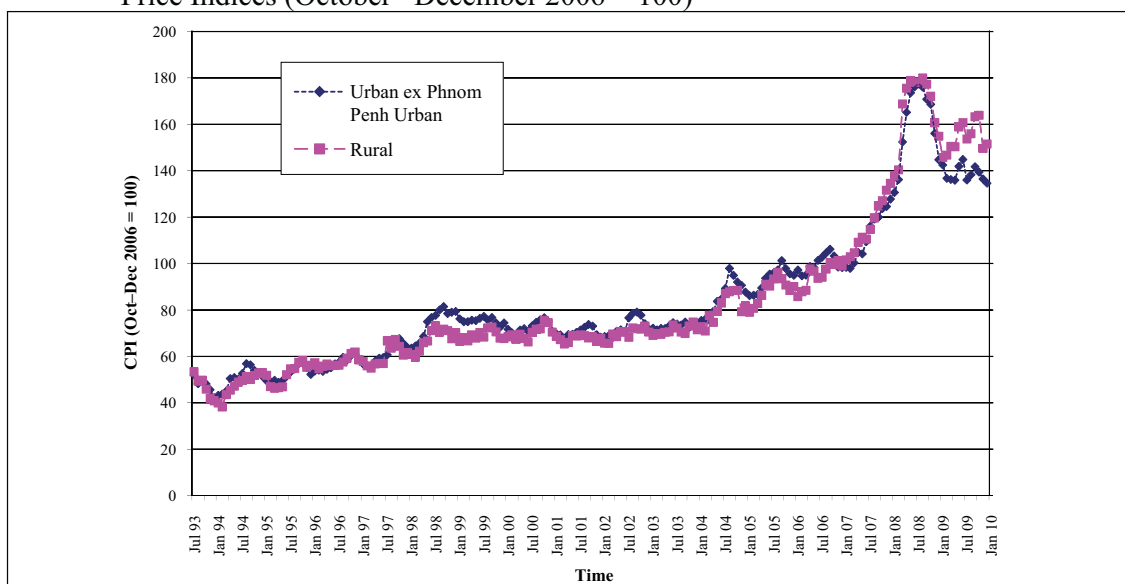


Inter-index comparisons require a different approach; at the base period, each individual index must be expressed relative to the index chosen as the numéraire to allow for the

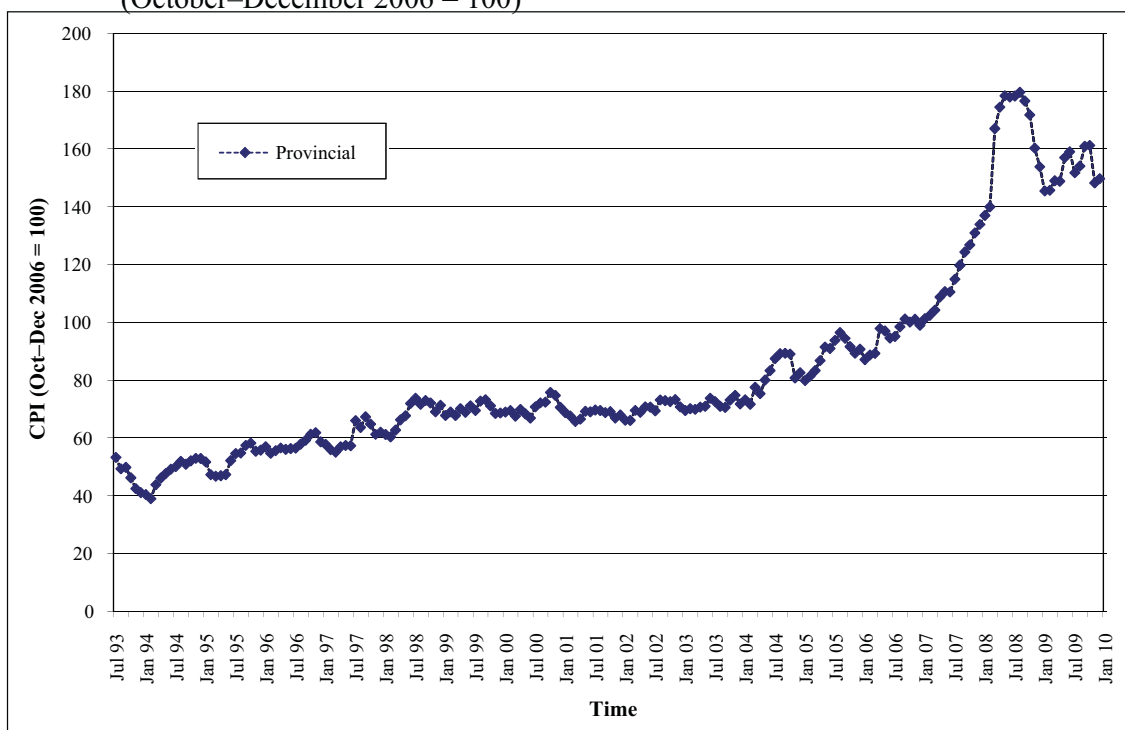
differences in the initial price levels in each province at the base period. Such an approach and an inter-index comparison conclude this section, using the Phnom Penh basic price index as the numéraire.

Graphs 1 and 2, for urban and rural markets respectively, show that price movements in the provinces were very diverse in the period 1993 to 2009. While prices have tended to move together over that period, the movements in the individual indices have not been uniform.

Graph 3: Provincial Basic Consumer Price Indices 1993–2009: Urban and Rural Basic Price Indices (October –December 2006 = 100)



Graph 4: Provincial Basic Consumer Price Index 1993–2009 (October–December 2006 = 100)

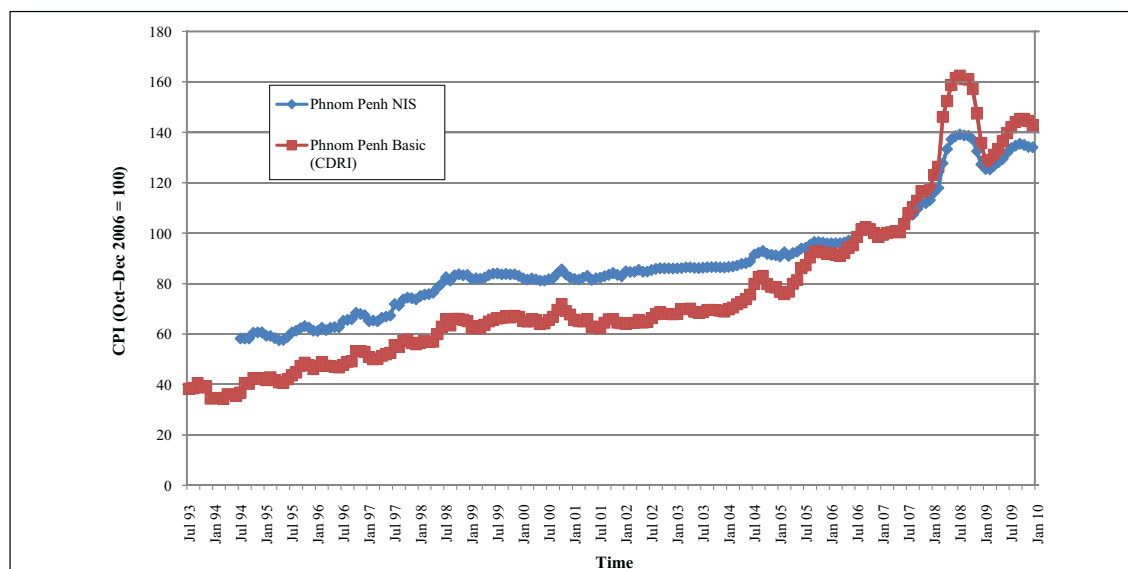




Broad trends in price movements are evident in the next two graphs, Graphs 3 and 4. The provincial basic price index is a population-weighted average of the urban and rural provincial basic price indices. The data are shown in two graphs for ease of presentation, as the provincial price index tends to closely follow the rural index, given the overwhelming weight of the rural population. The rural markets have a greater weight in the provincial index because the rural population comprised 81.26 percent of Cambodia's population, while the other urban population (i.e. excluding Phnom Penh municipality's urban population) comprises only 10.32 percent. The rural markets sample, however, is in provinces that account for only about 24 percent of the total rural population, while the urban markets are in provinces that account for about 51 percent of the total non-Phnom Penh urban population.

Graph 5 compares the NIS Phnom Penh consumer price index with the Phnom Penh basic consumer price index constructed by CDRI.

Graph 5: Provincial Basic Consumer Price Indices 1993–2009: Phnom Penh NIS and Phnom Penh Basic (CDRI) (October–December 2006 = 100)



Graph 5 shows that until the present index base period of the third quarter of 2006, for Phnom Penh, the basic price index moved broadly in line with the movements in the NIS CPI. Subsequently, the basic price index has risen faster than the NIS CPI and has remained higher. This is not surprising, because price rises since 2003 have been mainly in food and fuel, items which make up most of the basic price index. This outcome suggests that the poor have suffered more from recent price rises, because those rises have mostly been in commodities that feature more in the spending patterns of the poor. Price movements in the NIS CPI have been moderated by the stability of the non-food and non-energy items, which form a greater proportion of that index. This same pattern can be seen in Graph 6, which shows the NIS Phnom Penh CPI and the national basic consumer price index. Price increases have been more moderate in Phnom Penh.

The outcomes shown in Graph 6 can be seen more starkly in Table 7, which compares changes in selected periods in the national basic consumer price index with those in the Phnom Penh NIS CPI for the same periods. For each of the sub-periods, the movements observed in the national basic consumer price index have been about twice those observed in the NIS CPI.

Graph 6: Provincial Basic Consumer Price Indices 1993–2009: National Basic (CDRI) and Phnom Penh NIS (October–December 2006 = 100)

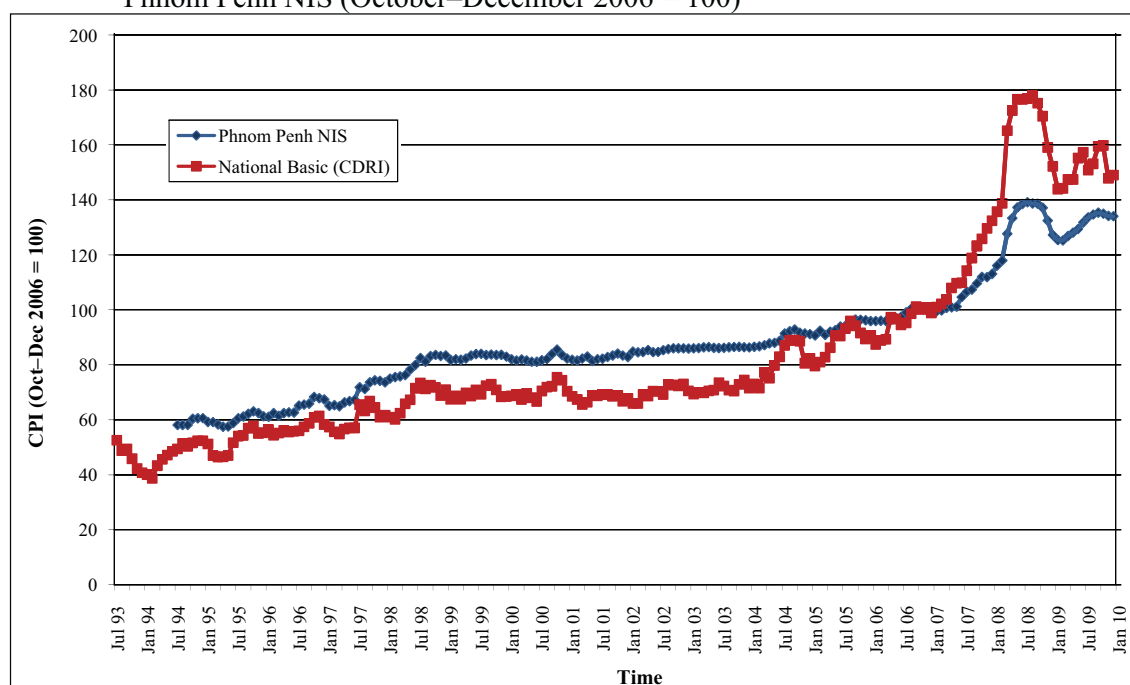


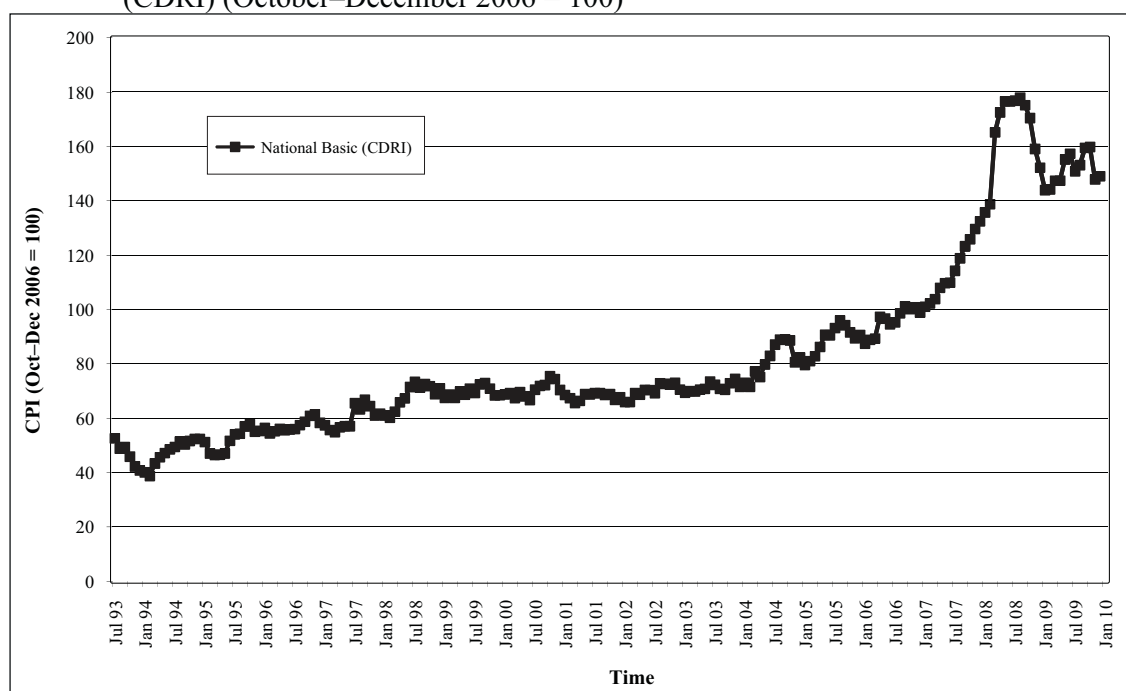
Table 7: Comparing National Basic and NIS Price Indices Price changes: August 2006 to December 2009 (%)

Period		Change	
From	To	National Basic	NIS CPI Phnom Penh
Aug 06	Jun 08	85.24	39.80
Jun 08	Feb 09	-18.47	-9.46
Feb 09	Dec 09	3.55	6.90
Aug 06	Dec 09	56.40	35.30

Table 8: National Basic Consumer Price Index Price change episodes: July 1993 to December 2009 (%)

Description	Begin	End	Months	Index change	Annualised rate
Falling	Jul 1993	Feb 1994	7	-26.40	-40.59
Rising	Feb 1994	Jul 1998	53	89.55	15.60
Stability	Jul 1998	Jun 2000	23	-9.12	-4.86
Rising	Jun 2000	Oct 2000	4	13.23	45.05
Falling	Oct 2000	Mar 2001	5	-1.69	-4.04
Stability	Mar 2001	Feb 2004	35	9.08	3.02
Sharp rise	Feb 2004	Sep 2007	43	85.14	18.77
Extreme rise	Sep 2007	Aug 2008	11	34.36	37.99
Extreme fall	Aug 2008	Jan 2009	5	-19.13	-39.77
Volatility	Jan 2009	Dec 2009	11	3.55	3.89

Graph 7: Provincial Basic Consumer Price Indices 1993–2009: National Basic Price Index (CDRI) (October–December 2006 = 100)



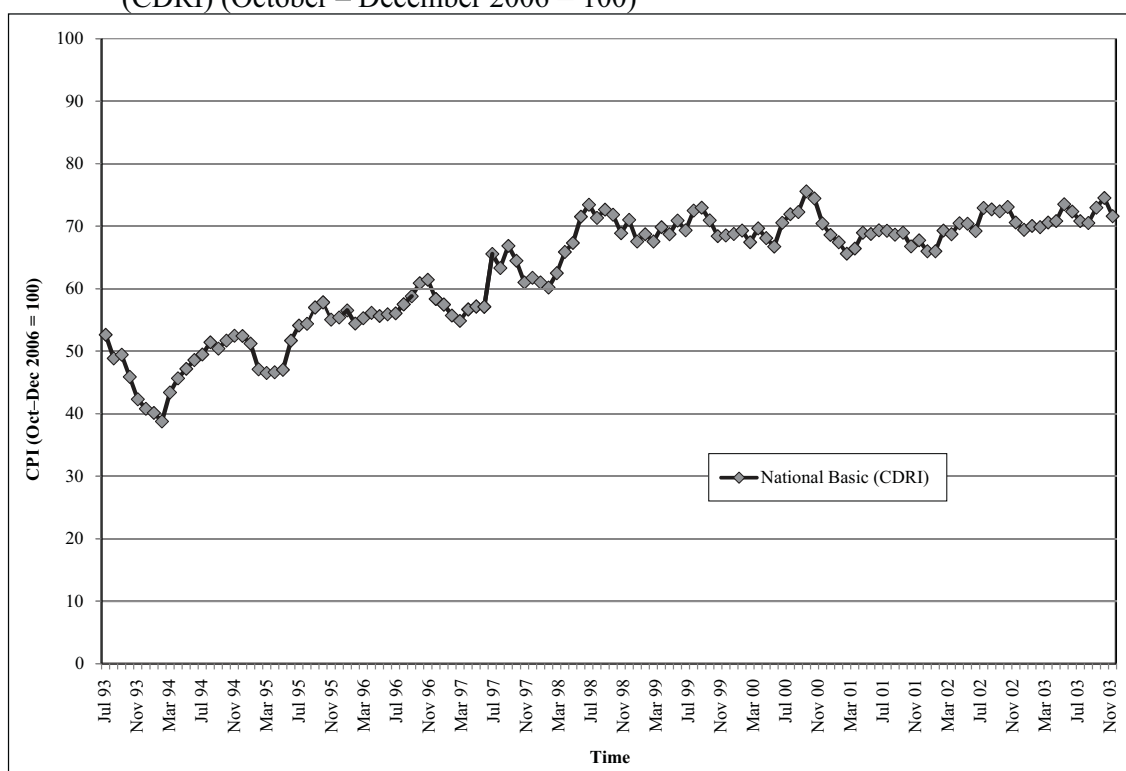
The overall pattern of price changes in Cambodia can be seen in Table 8 and Graph 7, which show movements in the national basic consumer price index for July 2003 to December 2009.

The national basic price index shows that prices fell from July 1993 to February 1994. This period of falling prices was followed by a lengthy period of price rises from February 1994 until July 1998, when the basic price index rose by 90 percent, which is an annual rate of almost 16 percent. These rises were followed by a two-year period of reasonable price stability from July 1998 until June 2000, over which period the index fell by 9 percent. From June 2000 to October 2000, the index rose by 13 percent (an annual rate of 45 percent) and then fell from October 2000 to March 2001 by almost 2 percent. These rises and falls in the index were followed by a three-year period of stability that lasted until February 2004, though the index rose by nine percent over this period.

The changes over the period 1993 to 2004 can be seen more clearly in Graph 8, which has a different vertical scale from Graph 7 so that the changes in this period are not swamped in the graphical presentation by the extreme changes that occurred in 2008 and 2009.

The period of relative price stability that ended in February 2004 was followed by a sharp rise in the basic price index that lasted until September 2007; the index rose by 85 percent in this period, an annual rate of 19 percent. In the period from September 2007 until August 2008, there was an extreme rise in the basic price index, when the index rose by 35 percent, an annual rate of 38 percent, and this period was followed by a very sharp fall from August 2008 to January 2009, when the index fell by 19 percent, an annual rate of 40 percent, with the basic index ending back at almost the same level as it was before the period of the extreme price rises began. From January 2009 until December 2009, the end of the period covered by this paper, the basic price index has exhibited considerable volatility.

Graph 8: Provincial Basic Consumer Price Indices 1993–2003: National Basic Price Index (CDRI) (October – December 2006 = 100)

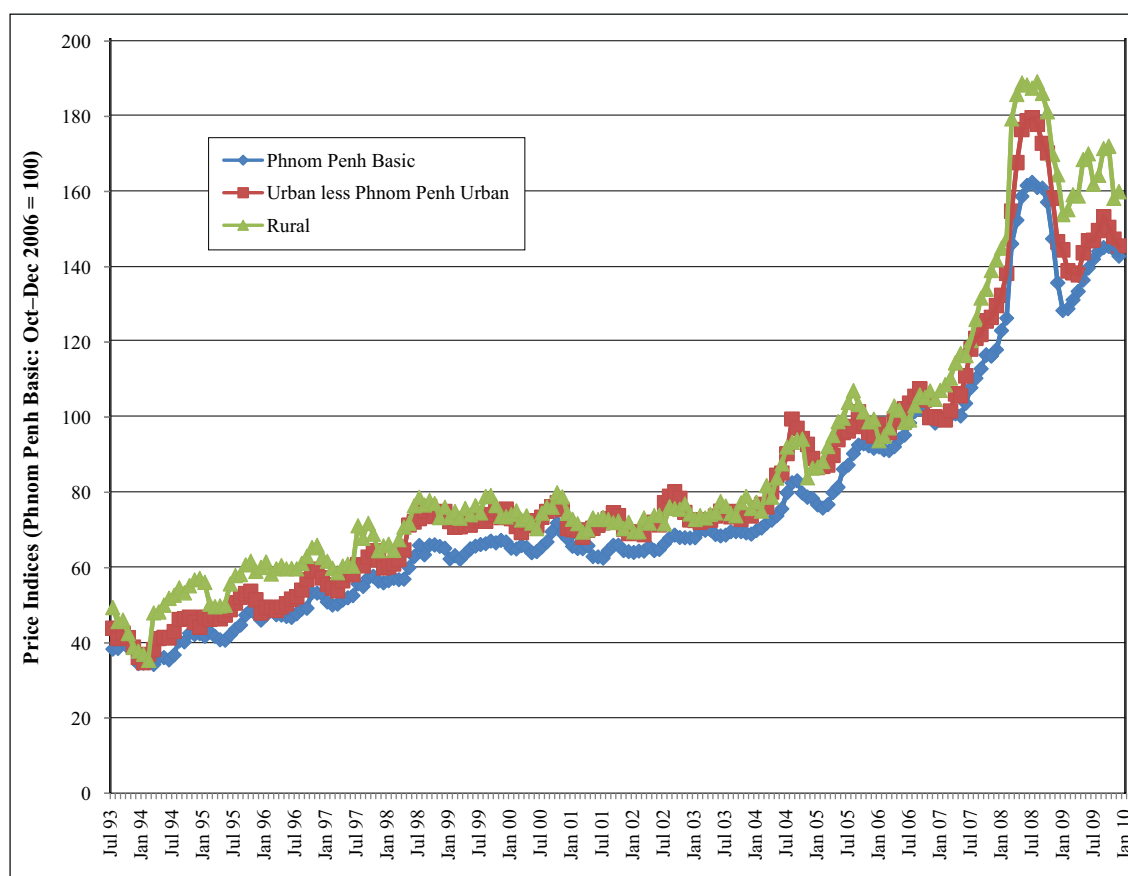


The rise in the national basic price index from September 2007 to August 2008 was driven by rises in the prices of rice, fish and gasoline, with the increase in the rice price being the major driver. From December 2007 until August 2008, the basic price index rose by 23 percent. Rice, fish and gasoline accounted for 67 percent of this change, with the contributors to the change being rice, 43 percent; fish, 16 percent; and gasoline, 8 percent. Rice was the major contributor to the index increase over this period, when the world rice price almost doubled as a result of both supply shortages and demand increases.

Graph 9 compares the Phnom Penh basic consumer price index to the urban and rural basic price indices.

In Graph 9, all the non-Phnom Penh prices indices are expressed relative to the Phnom Penh price level in the period October to December 2006, when the base of that index was set at 100 (the actual average value was 100.05). For the period October to December 2006, urban basic prices were about 1.5 percent higher than Phnom Penh prices, i.e. effectively almost the same, using the expenditure required to purchase the goods comprising the index as the comparative measure; the urban basic consumer price index was 101.46. Rural basic prices were about 6 percent higher than comparable Phnom Penh prices; the rural basic consumer price index was 105.65. Over the whole period, Phnom Penh prices have tended to be lower than either urban or rural prices for basic commodities. From 1993 to November 1997, rural prices were higher than urban prices. After December 1997, urban and rural prices have tended to move together, although since November 2006, rural prices have again tended to be higher than urban prices. The provincial and national basic consumer price indices are not shown in Graph 9, as they tend to mirror the movements in rural prices, given the preponderant weight of the rural population in the composition of both indices.

Graph 9: Provincial Basic Consumer Price Indices 1993–2009: Indices relative to Phnom Penh Basic Index (Phnom Penh Basic: October–December 2006 = 100)



## M. Conclusion

This paper has used basic consumer price data gathered in provincial markets, both urban and rural, by CDRI since 1993 to construct a provincial basic consumer price index for Cambodia. A basic price index uses only a limited range of commodities, in this case 12 commodities, and it is not intended to be a fully comprehensive consumer price index. Nonetheless, this index gives an indication of the movements in prices paid by the poor for basic commodities over this period.

Basic consumer price indices were constructed for nine urban provincial markets and three rural provincial markets using price data collected monthly by CDRI. These basic price indices for each provincial market were used to construct urban and rural basic consumer price indices, according to the location of the market where the prices were collected. In this context, “urban” means “other urban”, i.e. urban areas located outside Phnom Penh municipality. The urban and rural basic consumer price indices were combined to produce a provincial basic consumer price index for Cambodia, with “provincial” referring to all areas outside of what the NIS defines as the urban portion of the Phnom Penh municipality. The population of the “rural” portion of Phnom Penh municipality was included with the provincial rural areas for the purposes of constructing the provincial basic price index. In producing the composite indices from the individual market indices, the components were weighted by their appropriate population share, i.e. either urban or rural, of each province in the total Cambodian population.

A basic consumer price index was also constructed for the urban portion of Phnom Penh municipality using NIS price data for the same 12 basic commodities. Finally, the Phnom Penh basic consumer price index and the provincial basic consumer price index were combined, again using the appropriate population weights, to produce a national basic consumer price index.

All the constructed indices were linked using the current NIS CPI base of October to December 2006 to report price movements over the period 1993 to 2009. Basic price indices that used the earlier base periods of 1994 and 2000 were incorporated into linked indices using the 2006 base.

The paper concludes with a brief graphical analysis and commentary that discusses the movements of all the basic indices over the period 1993 to 2009. The analysis includes a discussion of the relationship of the provincial basic price indices to the Phnom Penh basic price index; the latter index was constructed with price data from the NIS Phnom Penh CPI.

## References

- Kannan, K.P. (1995) assisted by Be Kalyanna, Long Piseth & Chao Kimthy, *Construction of Consumer Price Index for Cambodia: A Review of Current Practices and Suggestions for Improvement*, Working Paper 1 (Phnom Penh: Cambodia Development Resource Institute)
- National Institute of Statistics (NIS) *Consumer Price Index, Phnom Penh*, monthly (Phnom Penh: National Institute of Statistics, Ministry of Planning)
- National Institute of Statistics (NIS) (1995), *Report on the Socio-economic Survey of Cambodia 1993/94 (All Rounds)* (Phnom Penh: National Institute of Statistics, Ministry of Planning)
- National Institute of Statistics (NIS) (2000), *Report on the Cambodia Socio-economic Survey 1999* (Phnom Penh: National Institute of Statistics, Ministry of Planning)
- National Institute of Statistics (NIS) (2003), *Kingdom of Cambodia: Statistical Year Book 2003* (Phnom Penh: National Institute of Statistics, Ministry of Planning)
- National Institute of Statistics (NIS) (2005), *Cambodia Inter-censal Population Survey 2004: Demographic Estimates and Revised Population Projections* (Phnom Penh: National Institute of Statistics, Ministry of Planning)

## APPENDICES

### Appendix 1: Provinces, markets and data availability

#### Provinces, Markets, Locations and Data Availability

Province Number	Province	Market	Location	Began	End	Comments
02	Battambang	Phsar Nat, Phsar Leu	Urban	July 1993	Ongoing	
03	Kompong Cham	Phsar Thom, Phsar Beoung Kok	Urban	July 1993	Ongoing	January–September 1994 missing September 1995–June 1997 missing
04	Kompong Chhnang	Phsar Sala Lek Pram (initially), Phsar Leu (ongoing)	Urban	August 1993	Ongoing	
06	Kompong Thom	Phsar Kompong Thom	Urban	July 1993	September 1999	September 1996–July 1997 missing
07	Kampot	Phsar Kampot	Urban	August 1993	Ongoing	January–May 1994 missing
10	Kratie	Phsar Kratie	Urban	March 1995	Ongoing	Some data in 1994
14	Prey Veng <sup>1</sup>	Phsar Prey Veng	Urban	January 1993	Ongoing	
16	Ratanakkiri	Phsar Ban Lung	Urban	January 1995	Ongoing	September 2002–December 2002 missing
17	Siem Reap	Phsar Leu (initially) Phsar Chas (ongoing)	Urban	January 1995	Ongoing	
20	Svay Rieng	Phsar Veal Yun	Urban	January 1995	Ongoing	Some data in 1994
05	Kompong Speu	Phsar Phnom Toch (initially), Phsar Oudong (ongoing)	Rural	January 1995	Ongoing	Some data in 1994 January 1998–March 2000 missing
08	Kandal	Phsar Prek Phneou	Rural	March 1994	Ongoing	
21	Takeo	Phsar Koh Andet	Rural	July 1993	Ongoing	

<sup>1</sup> Price data for Prey Veng were initially collected by Groupe de Recherche et d'Echange Technologiques (GRET) until about December 1998, when CDRI took over the collection. GRET collected more extensive prices than those used by CDRI, and not for all the same commodities. Only the prices used by CDRI were included in the Prey Veng price index, and the weights were adjusted, as appropriate, where the same commodity prices were not available.



## Appendix 2: Prices collected

### Consumer Prices Collected and Measurement Units

Item Number.	Item	Unit
1	Riel/USD exchange rate <sup>1</sup>	riels/USD
2	Gold <sup>1</sup>	riels/chi
3	Rice ( <i>Phkar Knhei</i> )	riels/kg
4	<b>Meat, Poultry, Fish</b>	
a.	Fresh fish ( <i>Trey Ros</i> )	riels/kg
b.	Pork 1 <sup>st</sup> quality	riels/kg
c.	Beef 1 <sup>st</sup> quality	riels/kg
5	Palm sugar	riels/kg
6	<b>Vegetables</b>	
a.	Cucumbers	riels/kg
b.	Wax gourds <sup>2</sup>	riels/gourd
7	Bananas ( <i>Namva</i> )	riels/hand
8	Thai sarong	riels/sarong
9	<b>Fuel</b>	
a.	Charcoal	riels/sack <sup>3</sup>
b.	Kerosene	riels/ℓ
10	Gasoline	riels/ℓ

- 1 Riel/USD exchange rate and gold price were not used in the construction of a price index.
- 2 Wax gourd (*Benincasa hispida*) is also known as bottle gourd, white gourd, winter gourd, winter melon. The NIS does not collect this price; the vegetable that the NIS calls “white gourd” is *Raphanus sativus*, a root vegetable, also known as daikon, Japanese radish, long white radish, white radish.
- 3 For some markets at some time periods, charcoal prices were reported in riel per kilogram. Phnom Penh charcoal prices are reported in this way. Per kilogram prices were converted to per sack prices using the conversion rate of 40 kg per sack.

### Appendix 3: Expenditure weights

#### Expenditure Weights: 1994 Base

			<i>Phnom Penh</i>	<i>Other Urban</i>	<i>Rural</i>
Item No.	Item	Unit	Weight	Weight	Weight
1	Riel/USD exchange rate	riels/USD			
2	Gold	riels/chi			
3	Rice ( <i>Phkar Knhei</i> )	riels/kg	<b>0.13307</b>	<b>0.18864</b>	<b>0.25551</b>
4	<b>Meat, Poultry, Fish</b>				
a.	Fresh fish ( <i>Trey Ros</i> )	riels/kg	0.11337	0.16545	0.18720
b.	Pork 1 <sup>st</sup> quality	riels/kg	0.14354	0.13501	0.11747
c.	Beef 1 <sup>st</sup> quality	riels/kg	0.03301	0.02161	0.02013
5	Palm sugar	riels/kg	<b>0.07077</b>	<b>0.08196</b>	<b>0.09626</b>
6	<b>Vegetables</b>				
a.	Cucumbers	riels/kg	0.03941	0.05439	0.04530
b.	Wax gourds	riels/gourd	0.03526	0.04548	0.04255
7	Bananas ( <i>Namva</i> )	riels/hand	<b>0.08610</b>	<b>0.08261</b>	<b>0.05836</b>
8	Thai sarong	riels/sarong	<b>0.07368</b>	<b>0.05510</b>	<b>0.05850</b>
9	<b>Fuel</b>				
a.	Charcoal	riels/sack <sup>3</sup>	0.07717	0.05801	0.05091
b.	Kerosene	riels/ℓ	0.01452	0.01165	0.01300
10	Gasoline	riels/ℓ	<b>0.18010</b>	<b>0.10008</b>	<b>0.05483</b>
			<b>1.00000</b>	<b>1.00000</b>	<b>1.00000</b>

Source: Derived from CSES 1994, NIS 1995

#### Expenditure Weights: 2000 Base

			<i>Phnom Penh</i>	<i>Other Urban</i>	<i>Rural</i>
Item No.	Item	Unit	Weight	Weight	Weight
1	Riel/USD exchange rate	riels/USD			
2	Gold	riels/chi			
3	Rice ( <i>Phkar Knhei</i> )	riels/kg	<b>0.19002</b>	<b>0.28860</b>	<b>0.34663</b>
4	<b>Meat, Poultry, Fish</b>				
a.	Fresh fish ( <i>Trey Ros</i> )	riels/kg	<b>0.11639</b>	<b>0.15993</b>	<b>0.16258</b>
b.	Pork, 1 <sup>st</sup> quality	riels/kg	0.13858	0.12475	0.10962
c.	Beef, 1 <sup>st</sup> quality	riels/kg	0.02057	0.01496	0.01461
5	Palm sugar	riels/kg	<b>0.04038</b>	<b>0.05331</b>	<b>0.06442</b>
6	<b>Vegetables</b>				
a.	Cucumbers	riels/kg	0.03815	0.05372	0.05917
b.	Wax gourds	riels/gourd	0.02836	0.04371	0.04819
7	Bananas ( <i>Namva</i> )	riels/hand	<b>0.06651</b>	<b>0.07537</b>	<b>0.05521</b>
8	Thai sarong	riels/sarong	<b>0.04988</b>	<b>0.04596</b>	<b>0.04448</b>
9	<b>Fuel</b>				
a.	Charcoal	riels/sack	0.04276	0.04228	0.05368
b.	Kerosene	riels/ℓ	0.05226	0.03309	0.01687
10	Gasoline	riels/ℓ	<b>0.21615</b>	<b>0.06434</b>	<b>0.02454</b>
			<b>1.00001</b>	<b>1.00002</b>	<b>1.00000</b>

Source: Derived from CSES 1999, NIS 2000

### Expenditure Weights: 2006 Base

Item No.	Item	Unit	<i>Phnom Penh</i>	<i>Other Urban</i>	<i>Rural</i>
			Weight	Weight	Weight
1	Riel/USD exchange rate	riels/USD			
2	Gold	riels/chi			
3	Rice ( <i>Phkar Knhei</i> )	riels/kg	<b>0.22508</b>	<b>0.24421</b>	<b>0.29870</b>
4	<b>Meat, Poultry, Fish</b>				
a.	Fresh fish ( <i>Trey Ros</i> )	riels/kg	<b>0.14357</b>	<b>0.17843</b>	<b>0.19648</b>
b.	Pork 1 <sup>st</sup> quality	riels/kg	0.12833	0.10172	0.09583
c.	Beef 1 <sup>st</sup> quality	riels/kg	0.02841	0.02307	0.02550
5	Palm sugar	riels/kg	<b>0.03687</b>	<b>0.05180</b>	<b>0.06501</b>
6	<b>Vegetables</b>				
a.	Cucumbers	riels/kg	0.02738	0.03479	0.03730
b.	Wax gourd	riels/gourd	0.04455	0.04393	0.05294
7	Bananas ( <i>Namva</i> )	riels/hand	<b>0.08088</b>	<b>0.06587</b>	<b>0.05388</b>
8	Thai sarong	riels/sarong	<b>0.05252</b>	<b>0.04661</b>	<b>0.04208</b>
9	<b>Fuel</b>				
a.	Charcoal	riels/sack	0.02136	0.04254	0.05635
b.	Kerosene	riels/ℓ	0.11204	0.06442	0.02718
10	Gasoline	riels/ℓ	<b>0.09900</b>	<b>0.10261</b>	<b>0.04875</b>
			<b>1.00000</b>	<b>1.00000</b>	<b>1.00000</b>

Source: Derived from CSES 2004 data supplied by NIS

## Appendix 4: Rebasing a Basic Consumer Price Index

### *Rebasing the Provincial Consumer Price Index to December 2000 with Adjustments for Kompong Thom*

In 2001, NIS rebased the Phnom Penh consumer price index to take account of changes in spending patterns revealed by the 1999 Cambodian Socio-economic Survey (CSES 1999). At the same time, the base prices were updated from a 1994 base to a 1999 base. For the provincial basic consumer price indices, a similar rebasing is required if the indices are to remain comparable to the NIS Phnom Penh consumer price index.

Rebasing the existing indices to the new base of December 2000 is straightforward. The price index for December 2000 needs to be recalculated using December 2000 prices with the 1994 weights for each index. These indices are then used to adjust the existing indices to take account of the new base. The required calculations are set out in the following formula.<sup>1</sup>

New index (Dec 2000 base) = Old index (1994 base)/Old index (Dec 2000, 1994 weights)

There is a problem with the price index for Kompong Thom province. Price data for that province ceased to be collected in September 1999, so there are no prices for December 2000 on which to rebase that index. The approach used to rebase the Kompong Thom basic consumer price index to a December 2000 base was as follows.

1. The required adjustments were based on the price indices for the three surrounding provinces for which prices were available from urban markets:
  - Kompong Cham
  - Kompong Chhnang
  - Siem Reap
2. A weighted average price level for the three provinces was calculated for the 12 months October 1998 to September 1999 inclusive.
  - The 12 months from October 1998 to September 1999 were taken to be representative of the average price level for that period for those three provinces while avoiding any purely seasonal influences.
3. A weighted average price level for Kompong Thom was calculated for the same 12 months.
4. A weighted average price level for the three provinces was calculated for December 2000 using the 1994 weights.
5. From these data, a consumer basic price index for Kompong Thom for December 2000, using 1994 weights, can be estimated using proportionality. The assumption is that basic consumer prices in Kompong Thom would have changed at the same rate as the average prices in the three adjacent provinces.
6. Finally, a basic consumer price index for Kompong Thom for December 2000, using 1999 weights, was estimated. The ratio of the average basic consumer price indices for the three provinces using 1994 weights and 1999 weights is applied to the estimated

---

<sup>1</sup> NIS (2003) p.359

index for Kompong Thom for December 2000, using the 1994 weights to yield an estimated basic index using 1999 weights.

The results of this rebasing estimate are shown in the following table.

**Kompong Thom**  
**Estimating Consumer Prices for December 2000**

	Consumer Price Indices		
	September 1999	December 2000	
	Annual average	1994 weights	1999 weights
Three provinces (Kg Cham, Kg Chhnang, Siem Reap)	120.35	125.73	97.77
Kompong Thom	199.19		
<i>Estimate for Kompong Thom</i>		<b>208.09</b>	<b>161.82</b>

## Appendix 5: Construction of 1994 Base Prices

	Province	Market	1994			Comments
			July	August	September	
02	Battambang	Urban	X	X	X	
03	Kompong Cham	Urban	Deflated July–Sept 1995			
04	Kompong Chhnang	Urban	X	X	X	
06	Kompong Thom	Urban	X	X	X	
07	Kampot	Urban	X	X	X	
10	Kratie	Urban	Deflated from July - Sept 1995			
14	Prey Veng	Urban	X	X	X	Wax gourds & bananas, 1996 prices deflated
16	Ratanakkiri	Urban	Deflated July–Sept 1995			
17	Siem Reap	Urban	Deflated July–Sept 1995			
20	Svay Rieng	Urban	Deflated July–Sept 1995			
05	Kompong Speu	Rural	X			Ministry of Commerce prices; wax gourds 1995 prices deflated
08	Kandal	Rural	X	X	X	Rice, and Meat, Poultry, Fish only for September
21	Takeo	Rural	X	X	X	No charcoal prices

## Appendix 6: Census Results

### Cambodia Inter-censal Population Survey 2004

1. Population in 1998	(millions)
Enumerated population in the census	11.438
Add population undercount of 1.78 per cent as per post-enumeration survey of the 1998 census	0.204
Add population in areas not covered by the census	0.045
Add Cambodian refugees in Thailand at census time	0.060
Total 1998 population	11.747

Source: NIS 2005, *Cambodia Inter-censal Population Survey 2004*

### Census Results by Province: Totals, Urban and Rural 1998 & 2008

			1998 Census					2008 Census					
Province No.	Province	Count			Shares (%)			Count			Shares (%)		
		Total	Urban	Rural	Total	Urban	Rural	Total	Urban	Rural	Total	Urban	Rural
1	Banteay Meanchey	577772	98848	478924	5.05	5.51	4.97	677872	181396	496476	5.06	6.94	4.60
2	Battambang	793129	139964	653165	6.93	7.79	6.77	1025174	180853	844321	7.65	6.92	7.83
3	Kompong Cham	1608914	45354	1563560	14.07	2.53	16.22	1679992	118242	1561750	12.54	4.52	14.49
4	Kompong Chhnang	417693	41703	375990	3.65	2.32	3.90	472341	43130	429211	3.53	1.65	3.98
5	Kompong Speu	598882	41478	557404	5.24	2.31	5.78	716944	54505	662439	5.35	2.09	6.14
6	Kompong Thom	569060	66014	503046	4.98	3.68	5.22	631409	31871	599538	4.71	1.22	5.56
7	Kampot	528405	33126	495279	4.62	1.84	5.14	585850	48274	537576	4.37	1.85	4.99
8	Kandal	1075125	58264	1016861	9.40	3.24	10.55	1265280	195898	1069382	9.45	7.49	9.92
9	Koh Kong	132106	29329	102777	1.16	1.63	1.07	117481	36053	81428	0.88	1.38	0.76
10	Kratie	263175	79123	184052	2.30	4.41	1.91	319217	35964	283253	2.38	1.38	2.63
11	Mondolkiri	32407	7032	25375	0.28	0.39	0.26	61107	4859	56248	0.46	0.19	0.52
12	Phnom Penh	999804	570155	429649	8.74	31.75	4.46	1327615	1242992	84623	9.91	47.55	0.78
13	Preah Vihear	119261	21580	97681	1.04	1.20	1.01	171139	10679	160460	1.28	0.41	1.49
14	Prey Veng	946042	55054	890988	8.27	3.07	9.24	947372	33079	914293	7.07	1.27	8.48
15	Pursat	360445	57523	302922	3.15	3.20	3.14	397161	25650	371511	2.96	0.98	3.45
16	Ratanakkiri	94243	16999	77244	0.82	0.95	0.80	150466	19317	131149	1.12	0.74	1.22
17	Siem Reap	696164	119528	576636	6.09	6.66	5.98	896443	174265	722178	6.69	6.67	6.70
18	Sihanoukville	155690	155690		1.36	8.67		221396	89447	131949	1.65	3.42	1.22
19	Stung Treng	81074	24493	56581	0.71	1.36	0.59	111671	17022	94649	0.83	0.65	0.88
20	Svay Rieng	478252	21205	457047	4.18	1.18	4.74	482788	17029	465759	3.60	0.65	4.32
21	Takeo	790168	39186	750982	6.91	2.18	7.79	844906	14456	830450	6.31	0.55	7.70
22	Oddar Meanchey	68279	22361	45918	0.60	1.25	0.48	185819	18694	167125	1.39	0.72	1.55
23	Kep	28660	28660		0.25	1.60		35753	4678	31075	0.27	0.18	0.29
24	Pailin	22906	22906		0.20	1.28		70486	15674	54812	0.53	0.60	0.51
	Enumerated Total	11437656	1795575	9642081		15.70	84.30	13395682	2614027	10781655		19.51	80.49
	Areas not counted	45000		45000									
	Revised total	11482656	1795575	9687081		15.64	84.36						

Source: Census results for 1998 and 2008

## Appendix 7: Population Weights

### Population Weights by Province

			Population share (%)		
	Index base		1994	2000	2006
	Population base		1998	2000	2006
	Population source		1998 Census	Interpolation	Interpolation
No	Province	Type	1994	2000	2006
02	Battambang	Urban	7.79	7.62	7.09
03	Kompong Cham	Urban	2.53	2.93	4.12
04	Kompong Chhnang	Urban	2.32	2.19	1.78
06	Kompong Thom	Urban	3.68	Not included	
07	Kampot	Urban	1.84	1.85	1.85
10	Kratie	Urban	4.41	3.80	1.98
14	Prey Veng	Urban	3.07	2.71	1.63
16	Ratanakkiri	Urban	0.95	0.91	0.78
17	Siem Reap	Urban	6.66	6.66	6.66
20	Svay Rieng	Urban	1.18	1.08	0.76
05	Kompong Speu	Rural	5.75	5.83	6.07
08	Kandal	Rural	10.50	10.38	10.03
21	Takeo	Rural	7.75	7.74	7.71
12	Phnom Penh	Urban	4.97	5.83	8.42
Share of total population	Urban less Phnom Penh Urban		10.67	10.58	10.32
	Rural		84.36	83.59	81.26
	Provinces		95.03	94.17	91.58
	Phnom Penh Urban		4.97	5.83	8.42
	Check		100.00	100.00	100.00



## Appendix 8: Basic Price Indices for Cambodia 1993–2000 – Original Data

### Part A: Provincial and Phnom Penh Basic Price Indices

Base: July–September 1994 = 100

	Urban Markets										Rural Markets			Phnom Penh Basic
Province	Battambang	Kompong Cham	Kompong Chhnang	Kompong Thom	Kampot	Kratie	Prey Veng	Ratanakkiri	Siem Reap	Svay Rieng	Kompong Speu	Kandal	Takeo	
Number	02	03	04	06	07	10	14	16	17	20	05	08	21	
Market type	Urban	Urban	Urban	Urban	Urban	Urban	Urban	Urban	Urban	Urban	Rural	Rural	Rural	Urban
Population share (%)	7.79	2.53	2.32	3.68	1.84	4.41	3.07	0.95	6.66	1.18	5.75	10.50	7.75	4.97
Jul1 993	105.05	75.49		106.56			64.57						106.13	97.89
Aug 1993	97.97	68.97	66.00	97.13	93.36		71.80						98.19	98.30
Sep 1993	100.19	75.02	73.27	91.06	91.71		79.18						99.06	103.40
Oct 1993	94.42	73.20	70.98	97.06	90.05		76.01						91.25	99.01
Nov 1993	91.90	65.88	54.95	92.33	88.34		73.85						83.43	100.33
Dec 1993	82.02	62.90	66.14	86.80			67.20						81.26	87.95
Jan 1994	79.82		59.23	83.51			81.58						79.44	88.36
Feb 1994	85.59		57.11	81.07		77.16	79.29						76.01	88.60
Mar 1994	87.28		64.30	87.96		79.50	80.04			63.65		92.97	78.09	87.43
Apr 1994	99.63		72.76	96.75			84.08			70.73	103.34	86.76	85.48	92.34
May 1994	98.63		78.35	98.90			87.73			64.04	101.07	89.80	93.85	92.13
Jun 1994	96.27		83.94	94.84	90.73		87.25			62.18	99.07	92.85	102.05	90.53
Jul 1994	97.03		89.70	98.17	92.68		93.85				100.00	95.99	101.37	93.88
Aug 1994	101.91		97.30	108.55	103.82		101.37				100.00	103.96	100.15	103.39
Sep 1994	101.06		112.99	93.29	103.50		104.78				100.00	100.05	98.48	102.73
Oct 1994	99.47	77.82	108.03	98.52	97.15		100.55				95.36	105.24	105.48	108.63
Nov 1994	92.67	71.88	103.06	105.58	102.91		99.89				90.72	114.95	102.32	107.86

	Urban Markets										Rural Markets				Phnom Penh Basic
Province	Battambang	Kompong Cham	Kompong Chhnang	Kompong Thom	Kampot	Kratie	Prey Veng	Ratanakkiri	Siem Reap	Svay Rieng	Kompong Speu	Kandal	Takeo		
Number	02	03	04	06	07	10	14	16	17	20	05	08	21		
Market type	Urban	Urban	Urban	Urban	Urban	Urban	Urban	Urban	Urban	Urban	Rural	Rural	Urban		
Population share (%)	7.79	2.53	2.32	3.68	1.84	4.41	3.07	0.95	6.66	1.18	5.75	10.50	7.75		
Dec 1994	88.56	77.44	98.10	99.26	101.58		95.27				86.08	118.46	102.21		
Jan 1995	93.93	86.59	93.06	104.70	99.44		98.61	84.97	68.81	80.87	81.45	119.67	96.97		
Feb 1995	89.02	82.53	94.50	106.76	101.91		99.62	86.38	68.81	81.77	86.71	98.28	91.74		
Mar 1995	89.10	84.98	97.32	103.27	108.92	87.42	102.69	82.99	71.80	78.79	81.53	99.22	89.95		
Apr 1995	84.62	83.48	99.33	108.22	103.52	83.61	97.89	83.75	71.48	86.55	80.91	98.35	93.38		
May 1995	90.55	84.63	96.83	110.49	98.11	82.92	97.47	92.73	73.86	85.82	77.93	96.44	100.47		
Jun 1995	97.91	86.10	95.48	111.95	107.84	84.71	91.89	99.91	75.15	94.44	76.94	109.52	115.75		
Jul 1995	99.00	85.18	95.83	117.76	108.57	86.12	114.70	88.53	80.71	84.83	102.22	104.43	119.41		
Aug 1995	105.95	89.91	101.66	115.04	108.74	87.54	99.62	86.94	87.65	90.26	113.21	106.15	109.35		
Sep 1995	108.60		112.99	117.02	108.92	87.40	102.69	87.19	94.29	95.68	126.42	106.15	116.02		
Oct 1995	111.50		105.45	119.00	103.52	87.26	97.89	85.36	99.97	101.28	125.41	109.63	117.30		
Nov 1995	109.12		99.72	120.98	98.11	87.12	97.47	90.46	88.79	93.61	110.26	111.51	107.81		
Dec 1995	97.52		92.25	122.97	107.84	86.98	91.89	88.79	75.63	95.58	106.78	116.36	109.27		
Jan 1996	94.21		89.38	124.95	112.23	86.83	109.50	97.48	82.71	86.49	112.89	121.87	103.90		
Feb 1996	97.67		89.03	126.87	118.20	84.39	109.92	89.90	78.42	98.06	116.46	108.99	102.83		
Mar 1996	94.64		90.29	128.78	121.15	81.95	114.30	84.22	75.56	91.76	114.28	114.78	103.46		
Apr 1996	96.43		86.83	130.70	124.92	79.51	114.57	92.99	79.25	95.49	118.67	114.87	105.72		
May 1996	101.95		89.61	132.63	116.99	77.06	112.64	87.48	83.53	97.03	117.07	111.10	107.98		
Jun 1996	107.65		89.61	134.54	124.38	74.62	120.59	86.89	85.27	93.35	114.40	111.24	110.25		
Jul 1996	108.80		89.61	136.46	125.31	72.18	126.60	86.60	86.51	97.40	117.22	108.37	112.51		

	Urban Markets										Rural Markets				Phnom Penh Basic
Province	Battambang	Kompong Cham	Kompong Chhnang	Kompong Thom	Kampot	Kratie	Prey Veng	Ratanakkiri	Siem Reap	Svay Rieng	Kompong Speu	Kandal	Takeo		
Number	02	03	04	06	07	10	14	16	17	20	05	08	21		
Market type	Urban	Urban	Urban	Urban	Urban	Urban	Urban	Urban	Urban	Urban	Rural	Rural	Rural	Urban	
Population share (%)	7.79	2.53	2.32	3.68	1.84	4.41	3.07	0.95	6.66	1.18	5.75	10.50	7.75	4.97	
Aug 1996	112.31		92.43	142.01	135.30	69.74	133.03	91.13	90.50	98.18	119.77	111.34	114.77	125.07	
Sep 1996	110.84		95.25		136.31	77.91	131.73	96.14	94.98	97.65	120.82	116.69	117.04	125.66	
Oct 1996	110.26		93.84		137.31	86.34	145.94	88.29	100.26	100.45	123.69	122.76	119.30	136.09	
Nov 1996	116.85		92.43		130.34	94.52	147.90	98.97	94.00	99.41	127.80	123.99	118.08	135.89	
Dec 1996	110.71		102.73		132.26	94.66	132.29	94.29	89.32	88.41	114.45	123.44	108.22	135.09	
Jan 1997	105.52		105.26		123.89	98.83	120.43	89.60	85.79	89.01	115.44	117.53	111.14	129.83	
Feb 1997	102.93		97.19		126.19	99.87	116.36	87.24	85.53	83.77	116.47	115.27	101.84	127.73	
Mar 1997	103.14		89.45		122.80	96.02	120.65	84.83	84.13	88.01	117.47	110.39	101.92	128.35	
Apr 1997	109.63		95.61		132.55	98.26	115.86	93.08	89.71	95.84	119.56	111.82	109.21	131.12	
May 1997	113.10		95.12		123.42	108.59	124.87	93.78	90.07	97.16	120.05	116.17	104.84	132.62	
Jun 1997	111.90		96.67		125.29	104.46	137.11	92.44	89.55	94.02	120.81	108.91	113.55	134.16	
Jul 1997	116.10	78.88	101.53		129.40	107.85	140.97	90.57	96.76	103.99	146.69	133.93	120.12	142.09	
Aug 1997	117.25	86.51	103.24	136.31	131.96	111.24	147.79	89.06	98.47	124.50	127.16	128.59	122.79	140.30	
Sep 1997	118.64	93.83	103.80	138.96	141.04	117.24	156.70	93.00	106.34	97.65	133.30	135.19	132.76	146.09	
Oct 1997	122.08	94.24	117.59	135.48	143.49	121.86	144.96	88.75	111.29	119.79	125.58	135.19	119.84	147.33	
Nov 1997	118.09	91.83	111.87	137.02	138.07	134.41	147.40	89.70	93.27	113.69	129.69	119.85	114.38	143.98	
Dec 1997	118.99	86.64	109.41	135.81	141.84	116.14	147.18	95.21	88.85	104.77	116.34	125.52	123.53	142.83	
Jan 1998	110.45	88.72	106.16	134.59	141.10	122.43	142.69	86.73	99.13	96.93		121.36	120.35	144.22	
Feb 1998	114.81	91.35	103.46	139.52	145.92	116.82	137.06	79.91	104.36	97.73		114.02	125.06	145.89	
Mar 1998	122.73	90.09	108.97	133.54	146.82	123.64	138.01	84.59	102.46	98.50		119.50	129.63	145.01	

Province	Urban Markets										Rural Markets			Phnom Penh Basic
	Battambang	Kompong Cham	Kompong Chhnang	Kompong Thom	Kampot	Kratie	Prey Veng	Ratanakkiri	Siem Reap	Svay Rieng	Kompong Speu	Kandal	Takeo	
Number	02	03	04	06	07	10	14	16	17	20	05	08	21	
Market type	Urban	Urban	Urban	Urban	Urban	Urban	Urban	Urban	Urban	Urban	Rural	Rural	Rural	Urban
Population share (%)	7.79	2.53	2.32	3.68	1.84	4.41	3.07	0.95	6.66	1.18	5.75	10.50	7.75	4.97
Apr 1998	123.73	94.02	109.29	148.90	154.26	121.37	151.74	95.75	108.02	104.82		119.95	145.95	145.35
May 1998	140.47	126.11	119.04	164.27	151.28	133.86	157.06	104.38	115.79	105.11		123.87	144.05	153.13
Jun 1998	147.32	102.43	121.56	177.97	151.25	140.11	180.11	106.40	109.86	110.70		128.78	158.87	160.68
Jul 1998	143.36	110.85	122.28	181.80	158.99	138.96	183.23	111.29	112.43	112.71		133.70	161.46	168.30
Aug 1998	152.63	112.23	127.28	189.81	161.46	137.78	181.90	103.24	118.40	112.55		139.61	140.85	161.91
Sep 1998	156.41	109.99	135.74	193.94	164.96	136.63	187.51	107.17	118.67	116.04		139.42	147.07	168.47
Oct 1998	141.90	110.16	131.47	196.50	160.38	134.08	175.26	103.17	117.63	114.89		136.64	148.04	168.56
Nov 1998	143.23	107.67	116.11	199.13	157.78	137.50	172.85	97.49	126.71	118.35		130.75	139.53	167.60
Dec 1998	143.22	115.43	117.99	201.69	155.18	138.39	170.43	111.36	127.47	104.88		136.44	143.44	166.26
Jan 1999	144.30	110.84	118.82	200.66	159.74	142.95	168.03	113.03	126.35	98.02		133.60	138.49	161.12
Feb 1999	139.50	106.79	115.32	208.74	162.47	135.33	166.48	102.06	122.95	97.93		135.89	141.51	162.90
Mar 1999	138.97	105.65	125.12	195.30	168.28	138.32	170.69	99.59	121.10	91.02		130.76	140.78	160.07
Apr 1999	143.88	109.36	126.80	192.77	165.53	140.76	175.31	107.46	114.61	109.21		134.14	147.36	163.41
May 1999	146.14	107.04	123.76	190.25	171.15	136.95	171.17	113.62	111.52	110.80		130.86	144.60	166.57
Jun 1999	144.40	103.40	120.47	193.37	177.77	132.80	171.85	107.67	124.52	112.39		134.12	149.89	167.95
Jul 1999	151.22	105.75	122.79	196.50	175.98	134.55	172.29	105.87	119.69	113.52		135.81	138.63	168.49
Aug 1999	146.35	110.12	122.89	208.23	156.20	125.86	167.29	104.01	124.31	109.63		146.78	141.09	169.12
Sep 1999	147.54	107.89	130.30	206.04	144.66	144.43	166.27	102.21	129.45	102.51		147.44	140.84	171.05
Oct 1999	143.97	107.05	131.45		154.56	140.68	168.64	96.08	131.43	109.76		139.39	140.58	169.79
Nov 1999	136.40	104.80	138.14		156.98	133.04	170.95	95.81	128.45	106.57		137.16	130.73	171.28

Province	Urban Markets										Rural Markets			Phnom Penh Basic
	Battambang	Kompong Cham	Kompong Chhnang	Kompong Thom	Kampot	Kratie	Prey Veng	Ratanakkiri	Siem Reap	Svay Rieng	Kompong Speu	Kandal	Takeo	
Number	02	03	04	06	07	10	14	16	17	20	05	08	21	
Market type	Urban	Urban	Urban	Urban	Urban	Urban	Urban	Urban	Urban	Urban	Rural	Rural	Rural	Urban
Population share (%)	7.79	2.53	2.32	3.68	1.84	4.41	3.07	0.95	6.66	1.18	5.75	10.50	7.75	4.97
Dec 1999	139.30	102.80	128.37		162.02	133.54	168.28	103.06	143.21	103.70		138.46	127.66	170.17
Jan 2000	133.20	106.98	127.42		162.42	121.55	150.12	99.88	141.34	100.32		139.74	128.01	167.28
Feb 2000	130.23	107.81	119.79		164.16	124.82	163.09	99.21	126.82	103.15		143.72	126.93	167.02
Mar 2000	128.12	112.98	125.74		159.66	135.55	157.57	108.81	112.31	106.25		139.89	123.64	169.81
Apr 2000	127.04	115.42	128.50		176.99	134.29	171.06	111.73	123.72	108.91	144.26	138.74	142.89	169.03
May 2000	131.27	112.72	121.05		179.82	133.77	173.02	110.24	122.33	107.31	132.80	139.91	137.13	165.24
Jun 2000	131.70	112.67	126.76		175.96	127.97	171.80	110.67	117.67	106.75	131.21	136.91	133.08	167.09
Jul 2000	138.43	112.30	130.35		181.41	126.51	176.37	106.89	123.59	110.01	155.73	136.58	141.86	169.76
Aug 2000	143.69	110.90	132.81		182.70	138.05	174.71	109.46	126.84	98.93	161.04	143.84	138.58	173.50
Sep 2000	147.74	114.37	137.17		178.72	134.64	182.19	109.57	127.23	115.17	167.14	139.23	140.84	180.18
Oct 2000	144.60	113.89	145.44		182.97	133.71	181.01	110.49	134.59	116.08	186.55	141.85	146.14	185.37
Nov 2000	146.23	114.20	135.65		188.86	133.92	168.34	103.22	130.86	109.07	189.12	136.00	147.40	178.45
Dec 2000	137.86	108.58	133.45	210.028	166.16	131.85	159.47	110.12	120.70	118.02	157.52	135.55	145.52	174.69

## Appendix 8:

### *Part B: National Basic Price Indices and Phnom Penh National Institute of Statistics Consumer Price Index 1993–2000*

*Base: July–September 1994 = 100*

	National Basic Price Indices				Phnom Penh
Index	Urban less Phnom Penh Urban	Rural	Provincial	National	
Index type	Basic	Basic	Basic	Basic	Urban_NIS
Population share	10.67%	84.36%	95.03%		4.97%
Jul 1993	93.73	106.13	104.73	104.39	
Aug 1993	86.70	98.19	96.90	96.97	
Sep 1993	88.90	99.06	97.92	98.19	
Oct 1993	86.75	91.25	90.74	91.15	
Nov 1993	81.92	83.43	83.26	84.11	
Dec 1993	76.19	81.26	80.69	81.05	
Jan 1994	78.11	79.44	79.29	79.74	
Feb 1994	79.04	76.01	76.35	76.96	
Mar 1994	81.26	86.65	86.04	86.11	
Apr 1994	91.05	90.32	90.40	90.50	
May 1994	91.96	93.81	93.60	93.53	
Jun 1994	90.64	97.31	96.56	96.26	
Jul 1994	95.39	98.69	98.32	98.10	100.00
Aug 1994	102.74	101.78	101.89	101.96	100.00
Sep 1994	101.86	99.53	99.79	99.94	100.00
Oct 1994	97.62	102.95	102.35	102.66	103.90
Nov 1994	95.50	105.06	103.99	104.18	104.15
Dec 1994	92.23	105.45	103.97	104.18	104.23
Jan 1995	89.01	103.18	101.59	101.83	101.88
Feb 1995	88.10	93.40	92.80	93.63	101.75
Mar 1995	89.06	91.99	91.66	92.39	100.30
Apr 1995	87.62	92.57	92.01	92.62	98.83
May 1995	89.39	93.31	92.87	93.41	98.97
Jun 1995	92.22	103.72	102.43	102.69	101.12
Jul 1995	95.73	108.74	107.28	107.48	104.19
Aug 1995	98.08	108.87	107.66	107.98	105.25
Sep 1995	102.31	114.20	112.86	113.26	106.95
Oct 1995	103.24	115.89	114.47	114.95	108.46
Nov 1995	99.64	110.02	108.85	109.48	107.37
Dec 1995	93.77	111.77	109.75	110.14	105.34
Jan 1996	96.30	113.91	111.93	112.38	105.09
Feb 1996	96.70	108.79	107.43	108.28	107.34
Mar 1996	95.53	111.00	109.26	109.85	105.73
Apr 1996	97.01	112.83	111.05	111.54	107.33
May 1996	98.59	111.53	110.07	110.57	107.82
Jun 1996	101.27	111.68	110.51	110.94	107.72

	National Basic Price Indices				
Index	Urban <i>less</i> Phnom Penh Urban	Rural	Provincial	National	Phnom Penh
Index type	Basic	Basic	Basic	Basic	Urban_NIS
Population share	10.67%	84.36%	95.03%		4.97%
Jul 1996	102.47	111.84	110.79	111.34	112.08
Aug 1996	106.02	114.47	113.52	114.09	112.72
Sep 1996	103.56	117.79	116.19	116.66	113.25
Oct 1996	107.31	121.86	120.23	121.02	117.45
Nov 1996	108.89	122.99	121.41	122.13	116.67
Dec 1996	104.77	116.37	115.07	116.06	115.91
Jan 1997	101.39	114.96	113.44	114.25	111.87
Feb 1997	99.53	111.22	109.91	110.79	112.29
Mar 1997	98.36	109.35	108.12	109.12	111.65
Apr 1997	103.04	112.83	111.73	112.70	114.12
May 1997	106.12	113.44	112.62	113.61	114.89
Jun 1997	106.43	113.26	112.49	113.57	115.63
Jul 1997	108.60	132.53	129.84	130.45	123.51
Aug 1997	114.67	126.38	125.06	125.82	122.41
Sep 1997	118.59	133.95	132.23	132.92	126.58
Oct 1997	121.24	127.93	127.18	128.18	127.86
Nov 1997	117.80	120.44	120.15	121.33	127.50
Dec 1997	114.17	122.68	121.72	122.77	126.60
Jan 1998	113.89	120.93	120.14	121.34	128.93
Feb 1998	115.30	118.71	118.33	119.70	129.90
Mar 1998	117.53	123.80	123.10	124.19	130.29
Apr 1998	122.64	130.99	130.05	130.81	131.15
May 1998	134.74	132.44	132.70	133.71	134.67
Jun 1998	138.14	141.56	141.18	142.15	137.48
Jul 1998	139.57	145.49	144.83	145.99	141.83
Aug 1998	143.75	140.14	140.55	141.61	139.52
Sep 1998	146.28	142.67	143.07	144.33	143.01
Oct 1998	140.97	141.48	141.43	142.77	143.73
Nov 1998	142.14	134.48	135.34	136.94	143.09
Dec 1998	142.93	139.41	139.81	141.12	143.42
Jan 1999	143.00	135.68	136.50	137.72	140.51
Feb 1999	140.31	138.28	138.51	139.72	141.08
Mar 1999	139.74	135.02	135.55	136.77	140.68
Apr 1999	141.13	139.75	139.91	141.07	141.47
May 1999	140.06	136.69	137.07	138.54	143.31
Jun 1999	141.80	140.82	140.93	142.27	144.21
Jul 1999	143.23	137.01	137.71	139.24	144.39
Aug 1999	141.80	144.36	144.07	145.32	143.64
Sep 1999	144.54	144.64	144.63	145.94	144.00
Oct 1999	137.11	139.89	139.58	141.08	143.68

	National Basic Price Indices				
Index	Urban <i>less</i> Phnom Penh Urban	Rural	Provincial	National	Phnom Penh
Index type	Basic	Basic	Basic	Basic	Urban_NIS
Population share	10.67%	84.36%	95.03%		4.97%
Nov 1999	134.02	134.43	134.38	136.21	143.78
Dec 1999	137.27	133.87	134.26	136.04	142.64
Jan 2000	131.85	134.76	134.43	136.06	141.02
Feb 2000	129.40	136.59	135.78	137.33	140.61
Mar 2000	127.73	132.99	132.40	134.26	140.94
Apr 2000	132.73	141.40	140.43	141.85	140.27
May 2000	132.91	137.31	136.81	138.23	139.49
Jun 2000	131.24	134.31	133.96	135.61	139.43
Jul 2000	135.05	142.88	142.00	143.38	140.44
Aug 2000	138.38	146.26	145.38	146.77	141.09
Sep 2000	140.75	146.44	145.80	147.51	144.26
Oct 2000	142.20	153.95	152.63	154.26	147.14
Nov 2000	139.72	152.41	150.99	152.35	143.65
Dec 2000	132.78	144.04	142.77	144.36	141.49



## Appendix 9: Basic Price Indices for Cambodia 1999–2007 – Original Data

### Part A: Provincial and Phnom Penh Basic Price Indices

Base: July–December 2000 = 100

	Urban Markets										Rural Markets				Phnom Penh Basic
Province	Battambang	Kompong Cham	Kompong Chhnang	Kompong Thom	Kampot	Kratie	Prey Veng	Ratanakkiri	Siem Reap	Svay Rieng	Kompong Speu	Kandal	Takeo		
Number	02	03	04	06	07	10	14	16	17	20	05	08	21		
Market type	Urban	Urban	Urban	Urban	Urban	Urban	Urban	Urban	Urban	Urban	Rural	Rural	Rural	Urban	
Population share (%)	7.62	2.93	2.19	4.41	1.85	3.80	2.71	0.91	6.66	1.08	5.83	10.38	7.74	5.83	
Jan 1999	111.51	106.95	95.55		90.46	114.29	104.32	114.08	104.64	90.44		100.44	98.25	95.17	
Feb 1999	105.94	102.41	94.32		92.32	108.96	103.94	101.99	105.45	89.96		102.47	102.49	96.84	
Mar 1999	106.55	100.32	102.00		96.07	112.05	106.91	102.51	104.77	85.51		99.76	99.97	97.39	
Apr 1999	110.08	103.84	101.81		93.84	112.02	109.73	107.80	94.45	103.44		101.21	105.37	95.40	
May 1999	112.79	99.98	98.56		96.40	111.61	106.22	116.03	92.46	106.35		98.31	101.74	96.72	
Jun 1999	109.99	95.27	96.12		100.21	105.23	106.31	107.97	104.74	109.25		101.67	106.42	98.16	
Jul 1999	117.03	99.42	99.48		100.06	107.16	105.67	102.28	98.44	109.80		100.88	96.85	99.22	
Aug 1999	111.54	100.70	96.27		87.06	99.67	100.32	105.16	101.31	103.36		108.33	99.93	100.01	
Sep 1999	111.22	96.00	100.78		80.03	114.71	100.60	99.47	105.92	97.77		108.80	100.11	99.46	
Oct 1999	107.19	96.16	103.72		85.60	109.32	101.77	93.81	106.45	103.08		103.28	100.29	99.70	
Nov 1999	98.32	93.47	108.26		86.80	101.60	100.65	94.15	104.11	98.64		101.85	91.43	98.59	
Dec 1999	99.52	92.79	98.70		89.95	102.60	98.27	100.14	117.37	96.27		102.40	89.44	99.37	
Jan 2000	94.86	96.02	94.73		89.48	91.62	90.05	98.27	114.42	93.35		103.89	89.63	98.50	
Feb 2000	91.09	98.30	92.29		91.09	94.24	94.57	98.44	100.64	96.32		105.73	88.72	95.96	
Mar 2000	88.86	103.31	93.29		87.17	103.13	91.86	104.68	86.86	98.75		101.58	86.03	95.35	
Apr 2000	86.74	105.76	95.29		97.86	99.99	100.64	104.34	95.17	104.44	85.56	101.37	97.09	96.37	
May 2000	92.14	101.54	88.15		100.50	100.04	103.34	103.25	96.18	101.81	76.87	102.35	94.49	95.53	
Jun 2000	92.36	100.26	91.89		98.42	94.85	101.76	103.89	91.86	98.07	75.92	100.66	91.21	93.48	
Jul 2000	97.97	100.88	94.89		101.64	96.46	104.09	99.08	96.16	100.66	91.70	100.04	97.62	93.63	

	Urban Markets														Rural Markets				Phnom Penh Basic
Province	Battambang	Kompong Cham	Kompong Chhnang	Kompong Thom	Kampot	Kratie	Prey Veng	Ratanakiri	Siem Reap	Svay Rieng	Kompong Speu	Kandal	Takeo						
Number	02	03	04	06	07	10	14	16	17	20	05	08	21						
Market type	Urban	Urban	Urban	Urban	Urban	Urban	Urban	Urban	Urban	Urban	Rural	Rural	Rural	Urban					
Population share (%)	7.62	2.93	2.19	4.41	1.85	3.80	2.71	0.91	6.66	1.08	5.83	10.38	7.74	5.83					
Aug 2000	101.71	98.74	97.30		101.64	103.08	100.92	102.10	100.12	89.10	95.10	104.25	94.86	95.73					
Sep 2000	103.62	101.43	101.23		98.92	102.10	105.30	101.19	99.94	104.04	98.98	99.72	98.61	97.53					
Oct 2000	100.32	99.72	108.61		101.14	100.39	104.14	102.09	107.83	104.96	110.76	101.34	103.56	101.64					
Nov 2000	102.07	102.26	99.16		104.78	100.27	95.14	93.83	102.32	96.44	111.35	97.75	103.66	105.05					
Dec 2000	94.30	96.98	98.82	167.029	91.87	97.70	90.41	101.70	93.62	104.80	92.12	96.90	101.70	101.04					
Jan 2001	91.30	97.66	95.65		94.96	95.57	89.69	97.88	93.89	93.29	92.39	100.31	88.75	99.01					
Feb 2001	87.45	97.49	90.59		95.40	93.00	86.60	101.62	99.98	92.11	91.74	101.63	81.83	94.99					
Mar 2001	87.44	86.83	89.54		95.14	89.05	86.20	97.78	97.25	93.61	91.57	94.51	83.35	94.22					
Apr 2001	92.03	92.59	90.76		94.54	94.49	85.44	97.69	98.78	88.39	88.45	95.70	87.01	94.05					
May 2001	85.74	93.86	90.87		89.37	99.09	89.77	106.34	101.96	96.40	85.83	101.13	94.63	95.22					
Jun 2001	88.51	94.50	93.20		88.27	96.10	98.74	102.58	102.56	90.07	83.96	100.30	95.85	91.02					
Jul 2001	95.92	94.25	90.29		91.35	93.40	99.81	102.58	100.01	93.25	88.93	98.50	96.97	90.94					
Aug 2001	95.33	92.06	92.92		96.10	102.89	100.56	94.18	99.41	101.79	89.80	94.82	99.79	90.41					
Sep 2001	92.64	98.03	94.82		92.84	108.08	100.28	104.97	103.30	111.90	94.31	93.45	94.15	93.31					
Oct 2001	97.53	97.59	98.98		92.22	102.08	94.32	89.42	103.31	95.15	93.65	93.82	96.08	95.33					
Nov 2001	90.54	93.82	99.97		80.96	97.43	93.38	92.39	97.84	91.47	88.23	93.79	91.74	95.42					
Dec 2001	91.62	94.40	94.62		82.34	89.09	92.90	90.96	96.12	90.27	85.59	101.40	89.08	93.34					
Jan 2002	92.22	93.14	95.29		81.97	92.21	92.31	107.80	94.16	90.94	85.70	93.54	90.52	92.99					
Feb 2002	93.76	93.97	91.37		82.56	93.23	92.87	103.33	93.24	98.74	87.06	93.28	89.55	92.67					
Mar 2002	89.04	93.72	91.74		85.34	95.45	91.78	99.97	93.24	91.97	85.83	92.74	108.54	93.16					
Apr 2002	90.98	96.85	95.29		87.34	92.63	92.64	100.26	104.43	105.36	78.71	90.83	111.52	93.19					
May 2002	93.73	98.32	98.20		89.16	94.08	99.29	95.65	98.30	108.42	80.62	92.01	117.22	94.95					
Jun 2002	92.87	98.87	98.22		92.46	91.87	96.67	97.80	95.84	108.16	80.56	93.23	115.54	93.35					

	Urban Markets										Rural Markets				Phnom Penh Basic
Province	Battambang	Kompong Cham	Kompong Chhnang	Kompong Thom	Kampot	Kratie	Prey Veng	Ratanakiri	Siem Reap	Svay Rieng	Kompong Speu	Kandal	Takeo		
Number	02	03	04	06	07	10	14	16	17	20	05	08	21		
Market type	Urban	Urban	Urban	Urban	Urban	Urban	Urban	Urban	Urban	Urban	Rural	Rural	Rural	Urban	
Population share (%)	7.62	2.93	2.19	4.41	1.85	3.80	2.71	0.91	6.66	1.08	5.83	10.38	7.74	5.83	
Jul 2002	104.70	103.47	98.63		99.73	96.39	103.11	101.63	106.27	113.99	80.11	90.83	109.33	93.73	
Aug 2002	108.82	110.48	100.16		104.41	97.23	105.49	102.01	106.05	116.26	87.00	100.39	108.57	96.00	
Sep 2002	110.95	104.79	103.30		91.46	98.90	102.88	101.69	115.33	116.54	87.00	98.46	109.57	98.22	
Oct 2002	112.96	102.27	100.56		92.57	99.02	98.41	101.36	109.36	103.99	81.28	99.92	111.18	99.35	
Nov 2002	104.75	101.75	110.76		87.86	94.95	92.54	101.04	99.15	107.94	82.20	102.21	113.18	98.37	
Dec 2002	93.12	106.80	103.70		87.86	94.64	91.66	100.72	99.15	108.81	77.91	99.92	108.37	98.31	
Jan 2003	103.77	98.75	103.41		93.86	85.75	88.87	93.47	97.82	101.80	72.43	101.89	103.50	98.23	
Feb 2003	97.07	100.63	99.16		90.05	93.33	90.37	98.33	97.05	107.13	83.25	100.94	100.16	98.32	
Mar 2003	97.17	102.11	98.75		88.77	97.15	91.87	98.23	97.83	108.67	77.85	98.58	105.89	101.17	
Apr 2003	97.00	101.85	101.33		89.54	94.91	96.55	95.18	96.37	107.62	82.92	97.96	106.84	101.17	
May 2003	98.52	102.00	102.06		90.26	92.18	101.20	98.65	99.22	110.72	88.25	99.27	101.82	101.34	
Jun 2003	101.42	103.93	104.20		92.00	97.14	101.14	99.03	98.23	118.73	85.61	104.59	109.25	99.55	
Jul 2003	100.74	106.09	111.65		90.25	98.64	96.38	99.41	95.47	112.85	86.07	103.96	104.20	98.98	
Aug 2003	102.81	96.44	113.22		94.77	97.91	97.61	98.36	91.46	108.96	80.52	101.64	103.97	99.33	
Sep 2003	107.19	99.82	109.54		94.52	98.13	99.17	103.63	93.63	104.96	78.56	101.34	103.38	100.60	
Oct 2003	103.32	93.03	106.43		92.57	86.87	94.29	98.42	98.50	100.95	77.68	109.19	107.16	100.67	
Nov 2003	104.32	97.85	112.20		88.75	93.62	92.72	97.66	98.78	104.22	78.72	109.65	113.18	100.62	
Dec 2003	102.63	95.72	105.44		88.01	94.19	94.35	102.94	101.08	95.22	78.28	109.72	98.88	100.11	
Jan 2004	107.04	89.90	104.31		95.43	98.98	92.48	102.59	107.36	97.94	79.68	114.99	96.57	99.68	
Feb 2004	102.53	99.69	108.88		94.88	94.56	95.01	105.01	110.02	115.34	78.56	105.66	101.95	100.99	
Mar 2004	105.45	104.18	109.18		93.96	95.90	103.99	105.01	98.07	113.75	80.14	113.09	119.57	102.00	
Apr 2004	107.85	105.51	114.41		96.05	102.67	110.64	108.82	108.49	111.60	82.23	107.75	112.22	103.88	
May 2004	118.16	113.42	122.49		99.21	96.27	119.66	112.62	115.32	116.13	91.89	114.15	116.73	105.04	

	Urban Markets													Rural Markets				Phnom Penh Basic
Province	Battambang	Kompong Cham	Kompong Chhnang	Kompong Thom	Kampot	Kratie	Prey Veng	Ratanakiri	Siem Reap	Svay Rieng	Kompong Speu	Kandal	Takeo					
Number	02	03	04	06	07	10	14	16	17	20	05	08	21					
Market type	Urban	Urban	Urban	Urban	Urban	Urban	Urban	Urban	Urban	Urban	Rural	Rural	Rural	Urban				
Population share (%)	7.62	2.93	2.19	4.41	1.85	3.80	2.71	0.91	6.66	1.08	5.83	10.38	7.74	5.83				
Jun 2004	122.16	104.43	122.29		103.88	103.21	118.62	97.08	116.52	113.35	109.75	112.12	121.61	106.75				
Jul 2004	124.61	118.23	122.83		108.27	106.98	117.59	118.80	129.66	121.15	111.03	122.73	123.81	109.42				
Aug 2004	141.50	135.38	129.87		112.38	110.68	122.91	122.05	149.12	120.85	109.98	131.46	116.03	115.62				
Sep 2004	123.55	131.99	130.37		109.29	115.33	113.22	125.31	155.00	122.47	108.98	135.23	114.01	119.45				
Oct 2004	114.97	117.36	123.09		100.02	121.84	113.39	106.95	156.82	128.18	107.28	137.03	113.29	120.17				
Nov 2004	114.57	123.53	122.08		105.03	117.51	101.97	125.98	150.74	119.69	96.05	115.52	111.20	115.44				
Dec 2004	118.49	116.40	120.19		103.52	111.90	102.49	125.19	133.82	121.18	99.73	117.59	116.32	113.89				
Jan 2005	122.85	119.68	120.71		112.50	111.15	104.56	126.78	120.43	124.49	95.92	112.57	117.07	113.46				
Feb 2005	119.21	118.46	115.34		108.55	120.13	104.20	125.13	123.70	125.58	99.10	112.49	122.05	114.22				
Mar 2005	118.31	118.49	124.44		111.39	119.47	106.32	123.80	123.10	123.50	93.10	114.15	133.18	112.86				
Apr 2005	126.73	126.79	126.21		106.65	123.16	114.26	129.37	120.66	129.34	101.06	117.47	137.78	114.19				
May 2005	134.75	128.43	127.69		122.48	124.87	121.43	142.08	125.51	134.70	113.63	124.14	139.47	118.83				
Jun 2005	133.74	132.52	142.07		119.79	127.16	123.17	143.18	128.11	143.53	106.32	127.47	137.17	120.91				
Jul 2005	140.28	131.65	134.17		123.26	124.36	125.03	143.39	128.11	134.92	107.41	133.57	141.26	128.29				
Aug 2005	140.09	134.61	134.91		125.72	131.53	128.13	149.54	125.38	152.43	110.56	136.17	148.02	130.03				
Sep 2005	149.69	142.47	137.32		127.42	135.03	135.53	145.38	128.61	159.29	110.80	134.78	137.96	134.87				
Oct 2005	136.26	137.54	132.46		125.02	132.16	136.43	139.19	128.69	150.14	103.02	130.68	137.28	138.29				
Nov 2005	139.40	123.54	133.58		130.68	116.71	132.63	144.20	125.86	149.62	101.21	128.08	132.79	138.95				
Dec 2005	146.42	127.41	132.94		119.76	118.65	125.08	144.20	119.53	139.74	106.84	128.22	134.91	137.88				
Jan 2006	147.74	130.09	136.58		122.52	128.11	125.44	153.12	122.64	140.77	106.88	125.82	119.16	136.59				
Feb 2006	136.33	124.96	129.54		125.76	125.34	125.55	154.05	124.59	139.10	113.79	125.69	123.67	137.26				
Mar 2006	135.02	126.60	134.29		117.02	127.93	133.44	151.40	124.40	144.88	108.00	126.40	128.75	135.85				
Apr 2006	139.13	131.04	136.13		121.33	146.39	134.28	152.15	130.98	147.24	130.15	135.45	141.79	135.54				

	Urban Markets										Rural Markets				Phnom
Province	Battambang	Kompong Cham	Kompong Chhnang	Kompong Thom	Kampot	Kratie	Prey Veng	Ratanakiri	Siem Reap	Svay Rieng	Kompong Speu	Kandal	Takeo	Penh Basic	
Number	02	03	04	06	07	10	14	16	17	20	05	08	21		
Market type	Urban	Urban	Urban	Urban	Urban	Urban	Urban	Urban	Urban	Urban	Rural	Rural	Rural	Urban	
Population share (%)	7.62	2.93	2.19	4.41	1.85	3.80	2.71	0.91	6.66	1.08	5.83	10.38	7.74	5.83	
May 2006	140.95	132.66	133.04		121.79	131.23	140.37	146.17	129.19	151.63	123.08	133.61	143.44	137.76	
Jun 2006	154.92	133.86	143.82		124.45	133.92	137.31	144.46	129.36	150.06	117.11	129.57	139.77	141.68	
Jul 2006	152.58	137.30	138.48		129.64	137.44	139.03	144.23	133.89	155.60	115.81	133.48	136.90	143.65	
Aug 2006	157.20	139.64	147.59		137.66	135.75	138.21	148.60	133.33	153.31	123.94	137.84	139.98	148.81	
Sep 2006	156.70	156.24	158.95		138.92	134.27	137.10	146.08	133.44	148.98	131.03	137.77	145.80	154.43	
Oct 2006	149.78	145.98	148.19		133.92	136.22	134.31	146.36	133.42	157.99	129.73	142.28	141.54	155.89	
Nov 2006	135.46	144.53	155.07		125.57	124.30	135.40	143.22	129.73	147.37	137.42	141.75	141.58	153.88	
Dec 2006	138.60	135.90	147.71		130.18	128.98	126.04	143.12	129.61	152.04	128.54	143.06	138.35	148.20	
Jan 2007	141.32	136.36	138.05		123.03	135.40	125.10	140.33	129.93	152.52	129.79	141.84	151.03	142.42	
Feb 2007	135.37	141.64	142.92		122.93	138.55	125.29	142.72	128.50	158.70	131.26	143.80	150.77	142.82	
Mar 2007	137.28	144.57	146.84		127.86	137.87	134.83	154.72	129.69	160.63	135.31	146.49	152.84	144.07	
Apr 2007	143.45	141.92	143.24		131.04	147.55	147.57	159.49	142.37	168.01	138.90	144.61	172.43	147.16	
May 2007	137.02	147.85	142.15		137.04	149.12	143.67	160.77	141.87	166.13	144.39	147.89	173.02	151.08	
Jun 2007	150.73	151.99	156.72		144.31	150.98	151.47	151.14	147.66	167.77	143.24	150.30	165.97	155.81	
Jul 2007	149.99	161.78	161.09		145.86	150.54	158.54	162.53	173.51	175.62	149.28	150.66	178.52	157.93	
Aug 2007	164.22	155.54	164.65		146.63	153.00	159.41	159.45	177.82	177.70	152.21	164.48	183.48	162.51	
Sep 2007	157.52	162.52	160.56		153.81	161.72	161.70	161.06	181.21	170.74	158.05	176.74	184.95	164.41	
Oct 2007	172.23	164.52	173.21		152.55	163.53	163.73	162.02	184.01	181.74	158.25	178.72	191.16	169.90	
Nov 2007	174.61	168.39	174.79		157.15	145.80	172.37	165.46	184.01	182.29	164.69	188.01	192.45	171.16	
Dec 2007	180.39	166.39	186.64		157.14	154.45	186.32	167.82	186.55	196.55	172.74	187.06	197.03	173.71	

## Appendix 9:

### Part B: National Basic Price Indices and Phnom Penh National Institute of Statistics Consumer Price Index 1999–2007

*Base: July–December 2000 = 100*

Index	National Basic Price Indices				Phnom Penh
	Urban less Phnom Penh Urban	Rural	Provincial	National	
Index type	Basic	Basic	Basic	Basic	Urban_NIS
<b>Population share (%)</b>	<b>29.72</b>	<b>23.96</b>	<b>94.17</b>		<b>5.83</b>
Jan 1999	106.06	99.51	100.24	100.05	99.31
Feb 1999	103.29	102.48	102.57	102.27	99.71
Mar 1999	104.41	99.85	100.36	100.07	99.43
Apr 1999	104.25	102.99	103.13	102.76	99.99
May 1999	104.03	99.78	100.26	100.13	101.29
Jun 1999	104.70	103.70	103.81	103.54	101.92
Jul 1999	105.78	99.16	99.90	99.91	102.05
Aug 1999	102.51	104.74	104.49	104.20	101.51
Sep 1999	104.47	105.09	105.02	104.71	101.77
Oct 1999	103.57	102.00	102.18	101.97	101.55
Nov 1999	99.67	97.39	97.65	97.75	101.62
Dec 1999	102.38	96.86	97.48	97.54	100.81
Jan 2000	98.21	97.80	97.84	97.73	99.67
Feb 2000	95.16	98.46	98.09	97.93	99.07
Mar 2000	92.99	94.94	94.72	94.82	99.61
Apr 2000	95.96	96.14	96.12	96.08	99.14
May 2000	96.91	93.61	93.98	93.95	98.59
Jun 2000	95.10	91.58	91.98	92.07	98.54
Jul 2000	98.35	97.23	97.35	97.26	99.26
Aug 2000	100.39	98.98	99.14	99.05	99.72
Sep 2000	102.01	99.18	99.50	99.62	101.96
Oct 2000	103.18	104.35	104.22	104.27	103.99
Nov 2000	100.78	102.97	102.73	102.63	101.53
Dec 2000	95.28	97.29	97.06	97.18	100.00
Jan 2001	93.72	94.64	94.54	94.57	99.43
Feb 2001	93.20	92.82	92.86	92.94	99.07
Mar 2001	90.84	90.19	90.26	90.48	99.95
Apr 2001	93.41	91.13	91.38	91.61	100.89
May 2001	93.86	95.31	95.14	94.90	98.92
Jun 2001	94.96	94.88	94.89	94.66	99.72
Jul 2001	96.11	95.67	95.72	95.41	99.92
Aug 2001	97.43	95.21	95.46	95.33	100.70
Sep 2001	99.47	93.89	94.51	94.56	101.30
Oct 2001	98.56	94.51	94.96	94.99	102.17
Nov 2001	93.83	91.77	92.00	92.08	101.30
Dec 2001	92.27	93.57	93.42	93.40	100.66

	National Basic Price Indices				
Index	Urban less Phnom Penh Urban	Rural	Provincial	National	Phnom Penh
Index type	Basic	Basic	Basic	Basic	Urban_NIS
<b>Population share (%)</b>	<b>29.72</b>	<b>23.96</b>	<b>94.17</b>		<b>5.83</b>
Jan 2002	92.77	90.66	90.89	91.00	103.05
Feb 2002	93.11	90.56	90.85	90.98	102.73
Mar 2002	91.92	96.17	95.69	95.54	102.82
Apr 2002	95.83	94.57	94.71	94.72	103.75
May 2002	96.39	97.38	97.27	97.04	102.79
Jun 2002	95.42	97.35	97.14	96.94	102.90
Jul 2002	103.21	94.20	95.21	95.26	103.66
Aug 2002	105.73	99.77	100.44	100.31	104.19
Sep 2002	107.20	99.26	100.16	100.11	104.53
Oct 2002	105.14	99.02	99.71	99.63	104.51
Nov 2002	100.23	100.88	100.81	100.67	104.47
Dec 2002	97.13	97.29	97.27	97.33	104.39
Jan 2003	97.25	95.24	95.46	95.63	104.51
Feb 2003	96.45	96.38	96.39	96.67	104.58
Mar 2003	97.36	95.90	96.06	96.36	104.95
Apr 2003	97.21	97.17	97.17	97.42	105.01
May 2003	98.65	97.41	97.55	97.67	104.72
Jun 2003	100.55	101.48	101.37	101.24	104.60
Jul 2003	99.97	99.68	99.72	99.69	104.75
Aug 2003	98.89	97.25	97.44	97.62	104.97
Sep 2003	100.74	96.45	96.93	97.15	105.08
Oct 2003	97.63	100.86	100.50	100.51	105.10
Nov 2003	99.42	103.26	102.83	102.67	104.98
Dec 2003	98.81	98.56	98.59	98.65	104.87
Jan 2004	101.68	100.44	100.58	100.60	105.18
Feb 2004	102.75	97.86	98.41	98.62	105.37
Mar 2004	102.17	107.16	106.60	106.44	105.85
Apr 2004	107.27	102.98	103.47	103.56	106.64
May 2004	113.29	109.56	109.98	109.79	106.92
Jun 2004	114.20	114.61	114.56	114.26	107.74
Jul 2004	120.77	120.23	120.29	120.02	111.07
Aug 2004	132.97	121.24	122.56	122.38	112.02
Sep 2004	129.07	121.98	122.78	122.63	112.81
Oct 2004	125.22	122.11	122.46	122.05	111.44
Nov 2004	123.28	109.38	110.95	111.12	111.02
Dec 2004	118.91	112.83	113.51	113.51	110.76
Jan 2005	118.21	109.97	110.90	111.09	111.00
Feb 2005	118.36	112.32	113.00	112.99	113.30
Mar 2005	118.83	115.17	115.59	115.50	111.50
Apr 2005	122.67	120.04	120.34	120.25	113.00

	National Basic Price Indices				
Index	Urban less Phnom Penh Urban	Rural	Provincial	National	Phnom Penh
Index type	Basic	Basic	Basic	Basic	Urban_NIS
<b>Population share (%)</b>	<b>29.72</b>	<b>23.96</b>	<b>94.17</b>		<b>5.83</b>
May 2005	128.52	126.54	126.76	126.42	113.70
Jun 2005	130.94	125.45	126.07	126.20	115.29
Jul 2005	131.68	129.69	129.91	129.92	115.65
Aug 2005	133.53	133.77	133.74	133.81	117.11
Sep 2005	139.02	129.97	130.99	131.41	118.49
Oct 2005	133.80	126.08	126.95	127.65	118.54
Nov 2005	130.84	123.06	123.93	124.75	118.42
Dec 2005	130.07	125.18	125.73	126.36	118.14
Jan 2006	133.36	119.06	120.66	121.63	118.25
Feb 2006	129.68	122.14	122.99	123.74	118.16
Mar 2006	130.45	122.68	123.55	124.25	118.13
Apr 2006	136.36	136.21	136.23	136.32	118.44
May 2006	134.98	134.22	134.31	134.74	119.25
Jun 2006	139.63	129.83	130.93	131.68	119.70
Jul 2006	141.11	130.28	131.50	132.51	121.59
Aug 2006	143.33	135.15	136.07	137.14	123.07
Sep 2006	145.25	138.73	139.46	140.42	123.75
Oct 2006	141.69	138.98	139.29	140.14	123.43
Nov 2006	135.13	140.64	140.02	140.50	122.25
Dec 2006	134.72	138.00	137.63	138.04	121.46
Jan 2007	135.05	141.88	141.11	141.19	121.26
Feb 2007	134.79	143.00	142.08	142.12	121.58
Mar 2007	137.64	145.82	144.90	144.86	122.22
Apr 2007	144.55	152.21	151.35	151.11	123.20
May2007	143.48	155.16	153.85	153.69	124.09
Jun 2007	150.94	153.65	153.34	153.49	126.62
Jul 2007	159.14	159.33	159.31	159.23	129.44
Aug 2007	163.82	167.63	167.20	166.93	129.47
Sep 2007	164.82	174.84	173.72	173.17	131.73
Oct 2007	171.11	177.76	177.01	176.60	134.13
Nov 2007	171.15	183.77	182.35	181.70	133.90
Dec 2007	176.83	186.80	185.68	184.98	134.57



# Appendix 10: Basic Price Indices for Cambodia 2005–2009 – Original Data

## Part A: Provincial and Phnom Penh Basic Price Indices

Base: October–December 2006 = 100

Province	Battambang	Urban Markets						Rural Markets						Phnom Penh Basic
		Kompong Cham	Kompong Chhnang	Kompong Thom	Kampot	Kratie	Prey Veng	Ratanakiri	Siem Reap	Svay Rieng	Kompong Speu	Kandal	Takeo	
Number	02	03	04	06	07	10	14	16	17	20	05	08	21	
Market type	Urban	Urban	Urban	Urban	Urban	Urban	Urban	Urban	Urban	Urban	Rural	Rural	Rural	Urban
Population share (%)	7.62	2.93	2.19	3.19	1.85	3.80	2.71	0.91	6.66	1.08	5.83	10.38	7.74	5.83
Jan 2005	86.19	84.63	81.29		88.47	84.90	79.81	92.02	92.31	82.07	72.59	81.59	83.70	78.16
Feb 2005	83.75	84.03	78.41		85.63	91.86	79.39	92.98	95.04	82.59	75.63	81.75	87.56	77.37
Mar 2005	83.27	83.69	83.58		85.84	90.23	80.74	92.19	94.26	81.30	71.57	82.14	95.48	77.88
Apr 2005	88.70	89.55	85.17		83.50	93.77	86.86	94.05	93.02	85.19	78.43	84.23	98.39	81.00
May 2005	93.81	90.54	85.97		94.76	94.82	91.48	101.11	96.31	88.83	88.26	88.27	100.65	82.45
Jun 2005	94.39	93.64	95.83		93.57	97.03	92.58	100.93	98.58	94.05	81.98	90.17	99.42	86.22
Jul 2005	99.41	92.31	89.75		95.27	93.99	94.56	99.04	98.58	89.29	82.68	94.92	102.02	87.21
Aug 2005	98.90	94.62	90.78		96.98	99.21	96.61	104.19	96.37	99.53	85.37	96.51	106.36	89.79
Sep 2005	105.68	100.31	92.12		99.22	102.42	101.88	101.66	98.78	104.22	85.97	95.05	98.52	92.14
Oct 2005	96.37	104.01	89.86		96.90	99.88	102.83	95.00	98.69	98.19	79.49	93.07	97.71	92.37
Nov 2005	98.65	88.48	90.94		101.04	90.75	100.18	100.54	96.75	98.59	77.90	90.83	94.02	92.09
Dec 2005	103.78	90.10	90.64		91.89	91.63	94.30	100.54	92.08	91.89	82.21	91.02	95.75	91.85
Jan 2006	104.07	91.55	93.46		93.84	98.73	94.34	109.72	94.76	93.58	82.17	88.94	85.33	92.06
Feb 2006	96.32	88.43	89.64		96.58	97.21	94.66	110.57	96.03	92.42	86.48	88.69	88.44	91.47
Mar 2006	95.39	89.36	91.69		90.63	98.79	100.16	107.50	96.13	95.30	81.83	89.96	92.58	91.21
Apr 2006	97.96	92.26	90.40		93.22	111.45	100.95	108.18	100.32	97.12	96.63	94.83	102.04	91.96
May 2006	99.86	93.78	90.88		93.92	101.52	105.85	101.92	99.02	99.42	93.85	93.90	103.29	93.72
Jun 2006	108.70	94.12	96.38		95.84	102.93	103.95	100.93	99.52	98.51	88.36	91.56	101.14	94.76
Jul 2006	107.99	96.40	94.57		100.26	105.47	105.09	99.48	102.70	103.58	87.54	94.38	99.39	98.03
Aug 2006	111.62	98.24	100.15		106.67	104.48	104.83	102.62	102.12	101.18	95.18	97.79	99.73	100.95

	Urban Markets														Rural Markets				Phnom
Province	Battambang	Kompong Cham	Kompong Chhnang	Kompong Thom	Kampot	Kratie	Prey Veng	Ratanakiri	Siem Reap	Svay Rieng	Kompong Speu	Kandal	Takeo	Phnom Basic					
Number	02	03	04	06	07	10	14	16	17	20	05	08	21						
Market type	Urban	Urban	Urban	Urban	Urban	Urban	Urban	Urban	Urban	Urban	Rural	Rural	Rural	Urban					
Population share (%)	7.62	2.93	2.19	3.19	1.85	3.80	2.71	0.91	6.66	1.08	5.83	10.38	7.74	5.83					
Sep 2006	111.08	109.36	105.70		107.26	103.52	103.80	100.72	102.19	96.73	100.23	98.04	104.41	101.95					
Oct 2006	106.01	102.60	99.81		102.90	104.74	101.53	100.97	102.16	103.42	97.89	99.70	100.83	101.27					
Nov 2006	95.96	100.92	101.83		96.65	95.19	102.40	99.54	99.08	97.07	104.50	100.06	100.54	100.19					
Dec 2006	98.02	96.49	98.36		100.45	100.06	96.07	99.49	98.76	99.51	97.61	100.23	98.63	98.54					
Jan 2007	100.02	95.82	94.08		94.92	104.59	95.49	96.94	99.15	100.08	97.84	100.25	106.33	99.36					
Feb 2007	95.57	99.40	96.77		94.77	106.25	95.62	99.30	98.05	104.28	100.51	101.75	106.52	100.14					
Mar 2007	96.94	101.82	99.30		99.08	106.53	103.25	113.77	98.80	105.76	103.21	102.86	108.18	100.42					
Apr 2007	101.33	100.24	96.77		101.46	113.55	111.90	117.79	107.75	110.38	105.86	101.10	122.29	100.89					
May 2007	97.15	103.88	95.94		106.66	113.31	109.13	119.01	106.99	108.96	110.26	103.61	122.50	100.37					
Jun 2007	106.70	106.43	104.90		111.61	114.85	114.87	113.84	111.53	110.00	109.52	106.35	116.93	103.68					
Jul 2007	106.97	112.43	109.37		113.34	114.18	119.13	116.69	130.60	114.40	114.52	106.67	125.37	107.87					
Aug 2007	116.45	108.76	109.65		113.84	115.65	119.58	117.22	134.03	115.81	116.73	115.30	127.88	110.38					
Sep 2007	111.89	113.51	107.30		120.43	122.14	121.79	116.30	136.24	111.58	121.59	123.55	129.03	112.91					
Oct 2007	120.11	114.84	114.43		118.31	123.67	123.51	117.35	138.15	119.25	122.17	125.15	133.62	116.57					
Nov 2007	122.29	116.69	118.32		122.71	111.64	129.24	120.19	138.15	118.49	127.11	131.52	135.45	116.33					
Dec 2007	126.24	116.55	122.76		121.99	117.83	140.42	121.25	139.94	128.85	134.24	131.51	138.91	117.97					
Jan 2008	129.71	117.59	125.32		126.20	132.01	138.71	121.63	141.41	127.40	133.08	133.10	147.47	123.07					
Feb 2008	131.43	122.10	126.57		128.83	137.60	145.19	134.70	152.84	130.70	137.10	131.66	154.42	126.37					
Mar 2008	146.41	137.11	141.96		151.24	140.53	173.52	159.04	169.37	149.19	144.25	182.00	171.11	146.14					
Apr 2008	156.27	156.33	151.40		165.42	166.05	180.34	187.97	177.25	164.40	162.41	180.73	179.37	152.42					
May 2008	160.02	167.59	156.05		166.20	174.84	188.97	187.00	192.95	172.55	170.02	178.97	185.94	158.76					
Jun 2008	170.55	168.90	157.80		170.95	179.98	187.29	179.30	189.30	172.69	164.87	181.54	184.26	161.64					
Jul 2008	179.48	172.37	158.28		174.67	176.96	205.68	173.77	176.77	189.26	172.64	170.20	193.47	162.52					

	Urban Markets										Rural Markets				Phnom
Province	Battambang	Kompong Cham	Kompong Chhnang	Kompong Thom	Kampot	Kratie	Prey Veng	Ratanakiri	Siem Reap	Svay Rieng	Kompong Speu	Kandal	Takeo	Penh Basic	
Number	02	03	04	06	07	10	14	16	17	20	05	08	21		
Market type	Urban	Urban	Urban	Urban	Urban	Urban	Urban	Urban	Urban	Urban	Rural	Rural	Rural	Urban	
Population share (%)	7.62	2.93	2.19	3.19	1.85	3.80	2.71	0.91	6.66	1.08	5.83	10.38	7.74	5.83	
Aug 2008	184.11	165.42	156.70		161.30	184.98	194.47	173.53	176.11	178.70	178.24	170.39	194.01	161.11	
Sep 2008	175.77	171.27	161.49		168.98	165.83	187.79	172.68	165.29	171.90	155.91	169.24	204.65	160.97	
Oct 2008	178.94	153.39	161.49		171.98	169.28	185.55	178.70	162.37	170.56	156.03	168.24	189.91	157.20	
Nov 2008	147.32	144.84	157.52		146.68	176.47	170.44	183.34	161.46	159.29	148.58	163.33	166.93	147.47	
Dec 2008	140.04	146.98	144.12		142.92	160.35	160.26	165.29	137.97	147.21	154.85	162.63	144.98	135.76	
Jan 2009	137.32	130.19	133.76		147.09	152.41	156.62	143.45	149.50	148.35	145.90	144.46	147.38	128.38	
Feb 2009	127.89	128.41	131.57		142.19	132.78	154.60	144.29	146.01	147.17	149.58	147.21	144.03	128.88	
Mar 2009	127.82	127.24	130.42		139.36	134.69	154.07	127.75	147.05	149.49	152.64	150.93	148.45	131.21	
Apr 2009	130.37	131.11	134.75		135.69	138.98	152.53	136.30	138.71	149.99	148.53	150.05	152.30	133.47	
May 2009	142.26	129.54	132.51		135.96	148.39	146.38	153.06	148.31	147.79	149.28	166.46	156.69	136.50	
Jun 2009	142.71	138.12	134.12		139.98	147.75	145.46	136.08	155.65	143.28	159.56	162.37	159.76	139.70	
Jul 2009	144.66	138.61	134.12		149.19	142.76		133.14	152.27	146.41	155.00	149.25	158.48	142.07	
Aug 2009	145.38	151.29	147.57		142.84	140.62		130.74	151.54	150.23	157.59	150.61	161.80	144.13	
Sep 2009	150.82	145.59	144.58		156.62	148.71		136.75	156.68	152.85	149.21	154.71	185.63	145.13	
Oct 2009	153.48	143.44	148.35		148.19	141.86		132.01	149.73	153.34	158.52	153.37	181.99	145.42	
Nov 2009	148.92	144.58	143.14		139.27	140.00		135.81	147.03	143.99	154.11	149.22	146.81	144.57	
Dec2 009	143.04	140.67	141.27		133.14	141.03		137.01	149.42	150.42	155.92	149.22	151.20	142.83	

## Appendix 10:

### *Part B: National Basic Price Indices and Phnom Penh National Institute of Statistics Consumer Price Index 2005–2009*

*Base: October–December 2006 = 100*

Index	National Basic Price Indices				Phnom Penh
	Urban <i>less</i> Phnom Penh Urban	Rural	Provincial	National	
Index type	Basic	Basic	Basic	Basic	Urban_NIS
Population share (%)	10.58	83.59	94.17		5.83
Jan 2005	86.88	79.98	80.76	80.54	78.16
Feb 2005	86.96	82.08	82.63	82.18	77.37
Mar 2005	86.85	83.77	84.12	83.59	77.88
Apr 2005	89.64	87.34	87.60	87.04	81.00
May 2005	93.48	92.28	92.41	91.57	82.45
Jun 2005	95.63	91.08	91.59	91.14	86.22
Jul 2005	96.17	94.10	94.33	93.73	87.21
Aug 2005	96.98	96.86	96.88	96.28	89.79
Sep 2005	101.14	93.86	94.68	94.47	92.14
Oct 2005	98.40	91.11	91.94	91.97	92.37
Nov 2005	95.81	88.57	89.39	89.61	92.09
Dec 2005	95.12	90.31	90.85	90.94	91.85
Jan 2006	97.26	86.04	87.31	87.71	92.06
Feb 2006	94.87	88.05	88.82	89.04	91.47
Mar 2006	94.96	88.74	89.44	89.59	91.21
Apr 2006	98.30	97.62	97.70	97.22	91.96
May 2006	98.23	96.93	97.08	96.80	93.72
Jun 2006	101.20	93.85	94.68	94.68	94.76
Jul 2006	102.70	94.26	95.21	95.45	98.03
Aug 2006	104.56	97.75	98.52	98.73	100.95
Sep 2006	106.25	100.66	101.29	101.35	101.95
Oct 2006	103.30	99.61	100.02	100.13	101.27
Nov 2006	98.42	101.35	101.02	100.95	100.19
Dec 2006	98.28	99.05	98.96	98.92	98.54
Jan 2007	98.38	101.60	101.24	101.08	99.36
Feb 2007	97.96	102.98	102.41	102.22	100.14
Mar 2007	100.31	104.67	104.18	103.86	100.42
Apr 2007	104.76	109.18	108.68	108.02	100.89
May 2007	104.14	111.42	110.60	109.74	100.37
Jun 2007	109.49	110.59	110.46	109.89	103.68
Jul 2007	116.10	114.73	114.88	114.29	107.87
Aug 2007	119.15	119.74	119.67	118.89	110.38
Sep 2007	120.00	124.83	124.28	123.33	112.91
Oct 2007	123.67	127.13	126.74	125.89	116.57
Nov 2007	124.61	131.67	130.88	129.65	116.33
Dec 2007	127.81	134.60	133.84	132.50	117.97
Jan 2008	130.64	137.75	136.95	135.78	123.07

	National Basic Price Indices				
Index	Urban <i>less</i> Phnom Penh Urban	Rural	Provincial	National	Phnom Penh
Index type	Basic	Basic	Basic	Basic	Urban_NIS
Population share (%)	10.58	83.59	94.17		5.83
Feb 2008	136.21	140.42	139.94	138.80	126.37
Mar 2008	152.41	168.85	167.00	165.24	146.14
Apr 2008	165.19	175.63	174.45	172.59	152.42
May 2008	173.60	178.95	178.35	176.70	158.76
Jun 2008	176.20	178.18	177.95	176.58	161.64
Jul 2008	177.47	178.36	178.26	176.93	162.52
Aug 2008	176.04	180.04	179.59	178.03	161.11
Sep 2008	170.82	177.31	176.58	175.27	160.97
Oct 2008	168.63	172.14	171.75	170.52	157.20
Nov 2008	156.08	160.74	160.22	159.14	147.47
Dec 2008	144.76	154.93	153.78	152.27	135.76
Jan 2009	142.49	145.77	145.40	143.97	128.38
Feb 2009	136.76	146.78	145.65	144.24	128.88
Mar 2009	136.24	150.56	148.95	147.46	131.21
Apr 2009	135.95	150.39	148.76	147.48	133.47
May 2009	141.89	158.92	157.00	155.28	136.50
Jun 2009	144.83	160.81	159.01	157.38	139.70
Jul 2009	135.98	153.70	151.71	150.90	142.07
Aug 2009	138.30	156.01	154.02	153.18	144.13
Sep 2009	141.75	163.33	160.89	159.57	145.13
Oct 2009	139.43	163.95	161.19	159.86	145.42
Nov 2009	136.45	149.69	148.19	147.89	144.57
Dec 2009	134.63	151.57	149.66	149.08	142.83

# Appendix 11: Basic Price Indices for Cambodia 1993–2009 – Linked Data

## Part A: Provincial and Phnom Penh Basic Price Indices

Base: October–December 2006 = 100

	Urban Markets										Rural Markets				Phnom Penh Basic
Province	Battambang	Kompong Cham	Kompong Chhnang	Kompong Thom	Kampot	Kratie	Prey Veng	Ratanakkiri	Siem Reap	Svay Rieng	Kompong Speu	Kandal	Takeo		
Number	02	03	04	06	07	10	14	16	17	20	05	08	21		
Market type	Urban	Urban	Urban	Urban	Urban	Urban	Urban	Urban	Urban	Urban	Rural	Rural	Rural	Urban	
Population share (%)	7.62	2.93	2.19	3.19	1.85	3.80	2.71	0.91	6.66	1.08	5.83	10.38	7.74	5.83	
Jul 1993	54.98	51.16		30.38			32.12						52.71	38.36	
Aug 1993	51.27	46.74	33.48	27.69	43.16		35.72						48.77	38.52	
Sep 1993	52.44	50.84	37.17	25.96	42.39		39.39						49.20	40.52	
Oct 1993	49.41	49.61	36.01	27.67	41.63		37.81						45.32	38.80	
Nov 1993	48.10	44.64	27.87	26.32	40.84		36.74						41.44	39.32	
Dec 1993	42.93	42.63	33.55	24.74			33.43						40.36	34.47	
Jan 1994	41.77		30.05	23.81			40.59						39.45	34.63	
Feb 1994	44.79		28.97	23.11		45.37	39.45						37.75	34.72	
Mar 1994	45.68		32.62	25.07		46.75	39.82			35.47		47.94	38.78	34.27	
Apr 1994	52.14		36.91	27.58			41.83			39.42	51.03	44.74	42.45	36.19	
May 1994	51.62		39.75	28.19			43.65			35.69	49.91	46.31	46.62	36.11	
Jun1 994	50.39		42.58	27.04	41.94		43.41			34.65	48.93	47.88	50.69	35.48	
Jul1 994	50.78		45.50	27.98	42.85		46.69				49.39	49.50	50.35	36.79	
Aug 1994	53.34		49.36	30.94	48.00		50.43				49.39	53.61	49.74	40.52	
Sep 1994	52.89		57.32	26.59	47.85		52.13				49.39	51.60	48.91	40.26	
Oct 1994	52.06	52.74	54.80	28.08	44.91		50.02				47.10	54.27	52.39	42.57	
Nov 1994	48.50	48.71	52.28	30.09	47.57		49.70				44.80	59.28	50.82	42.27	
Dec 1994	46.35	52.48	49.76	28.29	46.96		47.40				42.51	61.09	50.77	42.42	
Jan 1995	49.16	58.68	47.21	29.85	45.97		49.06	53.91	43.99	45.07	40.22	61.71	48.16	41.76	
Feb 1995	46.59	55.93	47.94	30.43	47.11		49.56	54.81	43.99	45.57	42.82	50.68	45.56	42.94	

	Urban Markets										Rural Markets				Phnom Penh Basic
Province	Battambang	Kompong Cham	Kompong Chhnang	Kompong Thom	Kampot	Kratie	Prey Veng	Ratanakkiri	Siem Reap	Svay Rieng	Kompong Speu	Kandal	Takeo		
Number	02	03	04	06	07	10	14	16	17	20	05	08	21		
Market type	Urban	Urban	Urban	Urban	Urban	Urban	Urban	Urban	Urban	Urban	Rural	Rural	Rural	Urban	
Population share (%)	7.62	2.93	2.19	3.19	1.85	3.80	2.71	0.91	6.66	1.08	5.83	10.38	7.74	5.83	
Mar 1995	46.63	57.59	49.37	29.44	50.35	51.41	51.09	52.66	45.90	43.91	40.27	51.17	44.68	41.73	
Apr 1995	44.29	56.58	50.39	30.85	47.85	49.17	48.70	53.14	45.69	48.23	39.96	50.72	46.38	40.84	
May 1995	47.39	57.36	49.12	31.50	45.36	48.76	48.49	58.84	47.22	47.83	38.49	49.73	49.90	40.69	
Jun 1995	51.24	58.35	48.43	31.91	49.85	49.81	45.71	63.40	48.04	52.63	38.00	56.48	57.49	42.17	
Jul 1995	51.81	57.72	48.61	33.57	50.19	50.64	57.06	56.17	51.59	47.28	50.48	53.85	59.31	43.62	
Aug 1995	55.45	60.93	51.57	32.79	50.27	51.47	49.56	55.16	56.03	50.30	55.91	54.74	54.31	44.73	
Sep 1995	56.84		57.32	33.36	50.35	51.39	51.09	55.33	60.27	53.32	62.43	54.74	57.62	47.39	
Oct 1995	58.35		53.49	33.92	47.85	51.31	48.70	54.17	63.90	56.45	61.94	56.53	58.26	48.67	
Nov 1995	57.11		50.59	34.49	45.36	51.23	48.49	57.40	56.76	52.17	54.45	57.51	53.55	47.60	
Dec 1995	51.04		46.79	35.05	49.85	51.14	45.71	56.34	48.34	53.27	52.73	60.00	54.27	46.10	
Jan 1996	49.30		45.34	35.62	51.88	51.06	54.48	61.85	52.87	48.20	55.75	62.85	51.60	47.38	
Feb 1996	51.12		45.16	36.16	54.64	49.63	54.69	57.05	50.13	54.65	57.52	56.20	51.07	48.82	
Mar 1996	49.53		45.80	36.71	56.01	48.19	56.86	53.44	48.30	51.13	56.44	59.19	51.38	47.45	
Apr 1996	50.47		44.05	37.26	57.75	46.75	57.00	59.01	50.66	53.21	58.60	59.24	52.51	47.39	
May 1996	53.36		45.46	37.81	54.08	45.32	56.04	55.51	53.39	54.08	57.82	57.29	53.63	47.03	
Jun 1996	56.34		45.46	38.35	57.50	43.88	59.99	55.13	54.51	52.02	56.50	57.37	54.76	46.74	
Jul 1996	56.94		45.46	38.90	57.93	42.44	62.99	54.95	55.30	54.28	57.91	55.88	55.88	47.77	
Aug 1996	58.78		46.89	40.48	62.55	41.01	66.18	57.83	57.85	54.72	59.15	57.42	57.00	49.02	
Sep 1996	58.01		48.32		63.01	45.82	65.53	61.01	60.71	54.42	59.67	60.18	58.13	49.25	
Oct 1996	57.70		47.60		63.48	50.77	72.60	56.02	64.09	55.98	61.09	63.31	59.25	53.33	
Nov 1996	61.16		46.89		60.26	55.58	73.58	62.80	60.09	55.40	63.11	63.94	58.65	53.25	
Dec 1996	57.94		52.11		61.14	55.67	65.81	59.83	57.10	49.27	56.52	63.66	53.75	52.94	
Jan 1997	55.22		53.39		57.27	58.11	59.91	56.85	54.84	49.60	57.01	60.61	55.20	50.88	

	Urban Markets														Rural Markets				Phnom Penh Basic
Province	Battambang	Kompong Cham	Kompong Chhnang	Kompong Thom	Kampot	Kratie	Prey Veng	Ratanakiri	Siem Reap	Svay Rieng	Kompong Speu	Kandal	Takeo						
Number	02	03	04	06	07	10	14	16	17	20	05	08	21						
Market type	Urban	Urban	Urban	Urban	Urban	Urban	Urban	Urban	Urban	Urban	Rural	Rural	Rural	Urban					
Population share (%)	7.62	2.93	2.19	3.19	1.85	3.80	2.71	0.91	6.66	1.08	5.83	10.38	7.74	5.83					
Feb 1997	53.87		49.30		58.34	58.73	57.89	55.36	54.67	46.69	57.52	59.44	50.58	50.06					
Mar 1997	53.98		45.38		56.77	56.46	60.02	53.83	53.78	49.05	58.01	56.93	50.62	50.30					
Apr 1997	57.38		48.50		61.28	57.78	57.64	59.06	57.34	53.41	59.05	57.66	54.24	51.38					
May 1997	59.19		48.25		57.06	63.86	62.12	59.51	57.57	54.15	59.29	59.90	52.07	51.97					
Jun 1997	58.56		49.04		57.92	61.43	68.21	58.66	57.24	52.40	59.66	56.16	56.40	52.58					
Jul 1997	60.76	53.45	51.51		59.82	63.42	70.13	57.47	61.85	57.95	72.45	69.06	59.66	55.69					
Aug 1997	61.36	58.63	52.37	38.86	61.01	65.41	73.53	56.51	62.95	69.38	62.80	66.31	60.99	54.98					
Sep 1997	62.09	63.59	52.65	39.61	65.20	68.94	77.96	59.01	67.97	54.42	65.83	69.71	65.94	57.25					
Oct 1997	63.89	63.87	59.65	38.62	66.33	71.66	72.12	56.31	71.14	66.76	62.02	69.71	59.52	57.74					
Nov 1997	61.80	62.23	56.75	39.06	63.83	79.04	73.33	56.92	59.62	63.36	64.05	61.81	56.81	56.42					
Dec 1997	62.27	58.71	55.50	38.71	65.57	68.30	73.22	60.42	56.80	58.39	57.46	64.73	61.36	55.97					
Jan 1998	57.80	60.12	53.85	38.37	65.23	71.99	70.99	55.03	63.37	54.02		62.59	59.77	56.52					
Feb 1998	60.09	61.90	52.48	39.77	67.46	68.70	68.19	50.70	66.71	54.46		58.80	62.11	57.17					
Mar 1998	64.23	61.05	55.28	38.07	67.87	72.70	68.66	53.67	65.49	54.89		61.63	64.38	56.83					
Apr 1998	64.76	63.72	55.44	42.45	71.32	71.37	75.49	60.76	69.05	58.42		61.86	72.49	56.96					
May 1998	73.52	85.46	60.38	46.83	69.93	78.71	78.14	66.23	74.02	58.58		63.88	71.54	60.01					
Jun 1998	77.10	69.42	61.66	50.73	69.92	82.39	89.61	67.51	70.23	61.69		66.41	78.90	62.97					
Jul 1998	75.03	75.12	62.03	51.82	73.50	81.71	91.16	70.62	71.87	62.81		68.95	80.19	65.95					
Aug 1998	79.88	76.06	64.57	54.11	74.64	81.02	90.49	65.51	75.68	62.72		72.00	69.96	63.45					
Sep 1998	81.86	74.54	68.86	55.28	76.26	80.34	93.29	68.00	75.86	64.67		71.90	73.04	66.02					
Oct 1998	74.26	74.66	66.69	56.01	74.14	78.85	87.19	65.46	75.19	64.03		70.47	73.53	66.06					
Nov 1998	74.96	72.97	58.90	56.76	72.94	80.86	85.99	61.86	81.00	65.95		67.43	69.30	65.68					
Dec 1998	74.96	78.23	59.86	57.49	71.74	81.38	84.79	70.66	81.48	58.45		70.36	71.24	65.16					



	Urban Markets										Rural Markets				Phnom Penh Basic
Province	Battambang	Kompong Cham	Kompong Chhnang	Kompong Thom	Kampot	Kratie	Prey Veng	Ratanakkiri	Siem Reap	Svay Rieng	Kompong Speu	Kandal	Takeo		
Number	02	03	04	06	07	10	14	16	17	20	05	08	21		
Market type	Urban	Urban	Urban	Urban	Urban	Urban	Urban	Urban	Urban	Urban	Rural	Rural	Rural	Urban	
Population share (%)	7.62	2.93	2.19	3.19	1.85	3.80	2.71	0.91	6.66	1.08	5.83	10.38	7.74	5.83	
Jan 1999	72.76	72.58	59.22	57.20	68.12	83.26	76.76	72.93	76.58	57.97		67.26	69.81	62.32	
Feb 1999	70.59	70.15	57.75	59.50	69.35	79.06	76.31	66.07	74.80	57.97		68.55	71.44	63.19	
Mar 1999	70.64	69.57	62.92	55.67	71.93	81.09	78.54	64.87	74.02	54.03		66.16	71.07	62.25	
Apr 1999	73.41	72.21	63.92	54.95	70.77	82.60	80.95	70.08	69.89	65.02		67.94	74.51	63.67	
May 1999	74.97	70.67	62.53	54.23	73.16	80.90	79.20	74.60	68.21	66.26		66.36	72.99	65.01	
Jun 1999	74.17	68.20	61.09	55.12	76.05	78.23	79.72	70.71	76.58	67.59		68.26	75.84	65.72	
Jul 1999	78.30	70.22	62.74	56.01	75.50	79.55	79.98	69.10	73.39	68.41		68.91	69.91	66.17	
Aug 1999	75.74	72.69	62.40	59.36	66.68	74.47	77.35	68.97	76.16	65.75		74.43	71.44	66.40	
Sep 1999	76.34	70.64	66.04	58.73	61.61	85.73	77.24	67.13	79.54	61.85		74.84	71.45	67.09	
Oct 1999	74.37	70.34	67.28		65.85	83.00	78.43	63.33	80.58	65.99		70.93	71.47	66.61	
Nov 1999	69.68	68.69	70.70		66.83	78.02	78.83	63.47	78.88	63.80		69.95	65.97	67.28	
Dec 1999	70.96	67.75	65.28		69.09	78.59	77.37	68.09	88.52	62.24		70.57	64.48	66.87	
Jan 2000	67.80	70.35	63.82		69.00	70.92	70.01	66.55	86.97	60.36		71.49	64.65	65.20	
Feb 2000	65.70	71.53	61.21		69.99	72.90	74.79	66.60	77.29	62.28		73.20	64.06	64.97	
Mar 2000	64.32	75.17	62.96		67.43	79.54	72.50	71.92	67.45	64.07		70.77	62.24	65.85	
Apr 2000	63.14	76.98	64.34		75.28	77.79	79.21	72.60	74.01	67.09	66.43	70.48	70.87	65.39	
May 2000	66.38	74.41	59.90		77.02	77.68	81.00	71.80	74.18	65.79	60.18	71.18	68.57	63.97	
Jun 2000	66.57	73.78	62.49		75.44	73.83	80.08	72.24	71.00	64.10	59.40	69.94	66.26	64.26	
Jul 2000	70.47	74.05	64.42		77.90	74.51	82.08	69.16	74.37	65.92	71.37	69.64	70.79	65.57	
Aug 2000	73.19	72.65	65.94		78.04	80.02	80.01	71.19	77.17	58.58	73.96	72.78	68.83	66.84	
Sep 2000	74.72	74.67	68.50		76.03	79.04	83.49	70.71	77.11	68.38	76.95	69.77	71.23	69.60	
Oct 2000	72.45	73.52	73.40		77.73	77.84	82.63	71.33	82.99	68.99	86.10	70.91	74.70	71.89	
Nov 2000	73.65	75.21	67.17		80.49	77.77	75.60	65.65	78.97	63.52	86.64	68.34	74.87	69.16	

	Urban Markets										Rural Markets				Phnom Penh Basic
Province	Battambang	Kompong Cham	Kompong Chhnang	Kompong Thom	Kampot	Kratie	Prey Veng	Ratanakkiri	Siem Reap	Svay Rieng	Kompong Speu	Kandal	Takeo		
Number	02	03	04	06	07	10	14	16	17	20	05	08	21		
Market type	Urban	Urban	Urban	Urban	Urban	Urban	Urban	Urban	Urban	Urban	Rural	Rural	Rural	Urban	
Population share (%)	7.62	2.93	2.19	3.19	1.85	3.80	2.71	0.91	6.66	1.08	5.83	10.38	7.74	5.83	
Dec 2000	68.10	71.35	66.88	59.87	70.58	75.79	71.78	71.06	72.27	68.96	71.69	67.76	73.50	67.77	
Jan 2001	65.87	71.86	64.99		72.94	74.10	71.16	68.39	72.44	61.36	71.87	70.12	64.14	65.68	
Feb 2001	63.09	71.73	61.50		73.29	72.11	68.71	71.01	77.14	60.59	71.37	71.04	59.14	65.15	
Mar 2001	63.09	63.89	60.78		73.08	69.04	68.39	68.32	75.03	61.57	71.24	66.07	60.24	65.03	
Apr 2001	66.40	68.13	61.64		72.62	73.26	67.79	68.26	76.21	58.14	68.81	66.90	62.89	65.84	
May 2001	61.86	69.06	61.68		68.65	76.83	71.22	74.30	78.66	63.41	66.77	70.69	68.40	62.94	
Jun 2001	63.86	69.54	63.26		67.81	74.51	78.34	71.68	79.13	59.24	65.31	70.11	69.28	62.88	
Jul 2001	69.21	69.35	61.30		70.18	72.42	79.19	71.68	77.16	61.34	69.18	68.85	70.09	62.52	
Aug 2001	68.78	67.74	63.09		73.82	79.78	79.79	65.80	76.70	66.95	69.86	66.28	72.13	64.52	
Sep 2001	66.84	72.13	64.38		71.32	83.80	79.57	73.34	79.70	73.60	73.37	65.33	68.05	65.92	
Oct 2001	70.37	71.81	67.19		70.84	79.14	74.83	62.48	79.71	62.58	72.85	65.58	69.44	65.98	
Nov 2001	65.32	69.03	67.84		62.19	75.54	74.09	64.56	75.49	60.16	68.64	65.56	66.31	64.54	
Dec 2001	66.11	69.46	64.22		63.25	69.07	73.70	63.56	74.16	59.38	66.59	70.88	64.39	64.30	
Jan 2002	66.54	68.53	64.67		62.97	71.49	73.24	75.32	72.65	59.81	66.67	65.39	65.43	64.08	
Feb 2002	67.65	69.15	62.02		63.42	72.28	73.68	72.20	71.94	64.94	67.72	65.20	64.73	64.42	
Mar 2002	64.24	68.96	62.28		65.55	74.01	72.82	69.85	71.94	60.49	66.77	64.83	78.45	64.44	
Apr 2002	65.64	71.26	64.69		67.09	71.82	73.50	70.06	80.58	69.30	61.23	63.50	80.61	65.66	
May 2002	67.63	72.35	66.64		68.49	72.94	78.77	66.83	75.84	71.31	62.71	64.32	84.72	64.55	
Jun 2002	67.01	72.75	66.65		71.02	71.23	76.70	68.34	73.94	71.14	62.67	65.17	83.51	64.81	
Jul 2002	75.54	76.14	66.93		76.61	74.73	81.81	71.01	81.99	74.98	62.32	63.49	79.02	66.38	
Aug 2002	78.51	81.30	67.97		80.20	75.39	83.70	71.28	81.82	76.47	67.68	70.17	78.47	67.91	
Sep 2002	80.06	77.10	70.10		70.26	76.68	81.62	71.05	88.98	76.65	67.68	68.83	79.20	68.70	
Oct 2002	81.50	75.25	68.24		71.11	76.78	78.08	70.83	84.38	68.40	63.23	69.84	80.36	68.02	

	Urban Markets													Rural Markets				Phnom Penh Basic
Province	Battambang	Kompong Cham	Kompong Chhnang	Kompong Thom	Kampot	Kratie	Prey Veng	Ratanakkiri	Siem Reap	Svay Rieng	Kompong Speu	Kandal	Takeo					
Number	02	03	04	06	07	10	14	16	17	20	05	08	21					
Market type	Urban	Urban	Urban	Urban	Urban	Urban	Urban	Urban	Urban	Urban	Rural	Rural	Rural	Urban				
Population share (%)	7.62	2.93	2.19	3.19	1.85	3.80	2.71	0.91	6.66	1.08	5.83	10.38	7.74	5.83				
Nov 2002	75.58	74.87	75.15		67.49	73.62	73.42	70.60	76.50	71.00	63.95	71.45	81.80	67.98				
Dec 2002	67.19	78.59	70.38		67.49	73.38	72.72	70.38	76.50	71.57	60.61	69.84	78.33	67.92				
Jan 2003	74.87	72.66	70.19		72.10	66.49	70.51	65.31	75.47	66.96	56.35	71.22	74.81	67.99				
Feb 2003	70.04	74.05	67.32		69.17	72.36	71.70	68.71	74.88	70.46	64.76	70.56	72.40	69.95				
Mar 2003	70.11	75.14	67.02		68.19	75.33	72.89	68.64	75.48	71.48	60.56	68.91	76.54	69.95				
Apr 2003	69.99	74.94	68.74		68.78	73.59	76.60	66.51	74.35	70.79	64.50	68.47	77.22	70.07				
May 2003	71.08	75.06	69.23		69.33	71.47	80.29	68.93	76.55	72.83	68.65	69.39	73.59	68.83				
Jun 2003	73.18	76.48	70.71		70.67	75.31	80.25	69.19	75.79	78.09	66.60	73.11	78.96	68.44				
Jul 2003	72.68	78.06	75.75		69.33	76.48	76.47	69.46	73.66	74.23	66.96	72.67	75.32	68.68				
Aug 2003	74.18	70.97	76.81		72.80	75.91	77.45	68.73	70.56	71.66	62.64	71.05	75.15	69.56				
Sep 2003	77.34	73.45	74.32		72.60	76.08	78.68	72.41	72.24	69.04	61.12	70.84	74.72	69.61				
Oct 2003	74.55	68.46	72.21		71.11	67.35	74.81	68.77	76.00	66.40	60.43	76.33	77.45	69.57				
Nov 2003	75.27	72.00	76.12		68.17	72.59	73.57	68.24	76.21	68.55	61.24	76.65	81.80	69.22				
Dec 2003	74.05	70.43	71.57		67.61	73.03	74.85	71.93	77.99	62.63	60.89	76.70	71.47	68.93				
Jan 2004	77.23	66.15	70.62		73.30	76.74	73.37	71.68	82.83	64.42	61.98	80.38	69.80	69.83				
Feb 2004	73.98	73.35	73.71		72.88	73.31	75.38	73.37	84.88	75.86	61.11	73.86	73.69	70.53				
Mar 2004	76.09	76.66	73.91		72.18	74.35	82.50	73.37	75.67	74.82	62.34	79.05	86.43	71.83				
Apr 2004	77.82	77.64	77.46		73.78	79.60	87.78	76.03	83.70	73.40	63.97	75.32	81.11	72.63				
May 2004	85.25	83.46	82.93		76.21	74.64	94.94	78.69	88.97	76.39	71.49	79.79	84.37	73.81				
Jun 2004	88.14	76.84	82.79		79.80	80.03	94.11	67.83	89.90	74.55	85.38	78.37	87.90	75.66				
Jul 2004	89.91	87.00	83.16		83.17	82.94	93.29	83.01	100.04	79.68	86.37	85.79	89.49	79.94				
Aug 2004	102.10	99.62	87.92		86.33	85.81	97.51	85.28	115.05	79.49	85.56	91.89	83.86	82.59				
Sep 2004	89.14	97.12	88.26		83.95	89.42	89.83	87.56	119.59	80.55	84.78	94.53	82.40	83.10				

	Urban Markets										Rural Markets				Phnom Penh Basic
Province	Battambang	Kompong Cham	Kompong Chhnang	Kompong Thom	Kampot	Kratie	Prey Veng	Ratanakkiri	Siem Reap	Svay Rieng	Kompong Speu	Kandal	Takeo		
Number	02	03	04	06	07	10	14	16	17	20	05	08	21		
Market type	Urban	Urban	Urban	Urban	Urban	Urban	Urban	Urban	Urban	Urban	Rural	Rural	Rural	Urban	
Population share (%)	7.62	2.93	2.19	3.19	1.85	3.80	2.71	0.91	6.66	1.08	5.83	10.38	7.74	5.83	
Oct 2004	82.95	86.36	83.33		76.83	94.46	89.97	74.73	120.99	84.31	83.46	95.79	81.88	79.83	
Nov 2004	82.66	90.90	82.64		80.68	91.11	80.91	88.02	116.31	78.72	74.72	80.75	80.37	78.75	
Dec 2004	85.49	85.65	81.36		79.52	86.76	81.31	87.47	103.24	79.70	77.59	82.20	84.07	78.45	
Jan 2005	86.95	84.20	80.30		86.61	85.61	79.26	87.90	91.99	81.65		79.08	83.33	76.71	
Feb 2005	84.35	83.37	76.80		83.65	92.50	79.01	87.01	94.51	82.38		79.13	86.90	75.86	
Mar 2005	83.70	83.39	82.84		85.76	91.87	80.61	86.36	94.05	81.03		80.35	94.85	76.79	
Apr 2005	89.58	89.24	84.11		82.28	94.73	86.64	90.24	92.27	84.88		82.73	98.11	79.95	
May 2005	95.12	90.39	85.11		94.37	95.95	91.96	98.94	95.94	88.43		87.38	99.50	81.41	
Jun 2005	94.60	93.32	94.79		92.50	97.75	93.21	99.62	98.01	94.12		89.67	98.01	86.17	
Jul 2005	99.32	92.54	89.37		94.99	95.33	94.72	99.32	98.04	88.69		94.10	100.92	87.30	
Aug 2005	99.08	94.68	90.05		96.84	100.69	96.98	103.83	95.94	99.85		95.90	105.65	90.35	
Sep 2005	105.86	100.26	91.60		98.47	103.48	102.45	101.09	98.42	104.39		94.80	98.31	92.63	
Oct 2005	96.42	99.48	88.77		96.49	101.07	103.20	95.94	98.44	98.37		92.27	97.71	92.96	
Nov 2005	98.66	87.57	89.73		100.79	90.25	100.39	100.21	96.39	98.32		90.33	94.31	92.39	
Dec 2005	103.71	89.85	89.45		92.05	91.50	94.58	100.24	91.66	91.76		90.50	95.90	91.79	
Jan 2006	104.32	91.54	92.16		94.08	98.71	94.72	107.94	94.22	92.96		88.66	85.07	92.12	
Feb 2006	96.40	88.19	88.05		96.69	96.90	94.90	108.84	95.63	91.87		88.51	88.25	91.36	
Mar 2006	95.46	89.24	90.71		90.41	98.68	100.57	106.45	95.67	95.19		89.47	92.19	91.13	
Apr 2006	98.15	92.24	90.46		93.29	111.94	101.27	107.17	100.22	96.91	97.40	94.95	101.62	92.16	
May 2006	99.83	93.63	90.09		93.86	101.37	106.04	101.73	98.90	99.43	93.67	93.89	102.89	94.19	
Jun 2006	108.98	94.13	96.18		95.83	102.99	103.99	100.70	99.31	98.48	88.48	91.40	100.66	95.26	
Jul 2006	107.99	96.45	93.96		100.15	105.57	105.16	99.61	102.59	103.20	87.61	94.22	98.91	98.50	
Aug 2006	111.55	98.24	99.74		106.53	104.49	104.82	102.70	102.06	101.05	94.93	97.59	99.71	101.52	

	Urban Markets														Rural Markets				Phnom Penh Basic
Province	Battambang	Kompong Cham	Kompong Chhnang	Kompong Thom	Kampot	Kratie	Prey Veng	Ratanakiri	Siem Reap	Svay Rieng	Kompong Speu	Kandal	Takeo						
Number	02	03	04	06	07	10	14	16	17	20	05	08	21						
Market type	Urban	Urban	Urban	Urban	Urban	Urban	Urban	Urban	Urban	Urban	Rural	Rural	Rural	Urban					
Population share (%)	7.62	2.93	2.19	3.19	1.85	3.80	2.71	0.91	6.66	1.08	5.83	10.38	7.74	5.83					
Sep 2006	111.05	109.45	105.71		107.21	103.50	103.82	100.81	102.15	96.89	100.09	97.83	104.31	102.40					
Oct 2006	106.01	102.61	99.65		102.93	104.76	101.56	101.04	102.13	103.45	97.95	99.73	100.82	101.53					
Nov 2006	95.96	100.98	101.94		96.65	95.24	102.42	99.52	99.08	97.03	104.47	100.02	100.56	100.13					
Dec 2006	98.02	96.45	98.36	100.00	100.44	100.03	96.05	99.47	98.77	99.52	97.61	100.24	98.62	98.48					
Jan 2007	100.02	95.82	94.08		94.92	104.59	95.49	96.94	99.15	100.08	97.84	100.25	106.33	99.36					
Feb 2007	95.57	99.40	96.77		94.77	106.25	95.62	99.30	98.05	104.28	100.51	101.75	106.52	100.14					
Mar 2007	96.94	101.82	99.30		99.08	106.53	103.25	113.77	98.80	105.76	103.21	102.86	108.18	100.42					
Apr 2007	101.33	100.24	96.77		101.46	113.55	111.90	117.79	107.75	110.38	105.86	101.10	122.29	100.89					
May 2007	97.15	103.88	95.94		106.66	113.31	109.13	119.01	106.99	108.96	110.26	103.61	122.50	100.37					
Jun 2007	106.70	106.43	104.90		111.61	114.85	114.87	113.84	111.53	110.00	109.52	106.35	116.93	103.68					
Jul 2007	106.97	112.43	109.37		113.34	114.18	119.13	116.69	130.60	114.40	114.52	106.67	125.37	107.87					
Aug 2007	116.45	108.76	109.65		113.84	115.65	119.58	117.22	134.03	115.81	116.73	115.30	127.88	110.38					
Sep 2007	111.89	113.51	107.30		120.43	122.14	121.79	116.30	136.24	111.58	121.59	123.55	129.03	112.91					
Oct 2007	120.11	114.84	114.43		118.31	123.67	123.51	117.35	138.15	119.25	122.17	125.15	133.62	116.57					
Nov 2007	122.29	116.69	118.32		122.71	111.64	129.24	120.19	138.15	118.49	127.11	131.52	135.45	116.33					
Dec 2007	126.24	116.55	122.76		121.99	117.83	140.42	121.25	139.94	128.85	134.24	131.51	138.91	117.97					
Jan 2008	129.71	117.59	125.32		126.20	132.01	138.71	121.63	141.41	127.40	133.08	133.10	147.47	123.07					
Feb 2008	131.43	122.10	126.57		128.83	137.60	145.19	134.70	152.84	130.70	137.10	131.66	154.42	126.37					
Mar 2008	146.41	137.11	141.96		151.24	140.53	173.52	159.04	169.37	149.19	144.25	182.00	171.11	146.14					
Apr 2008	156.27	156.33	151.40		165.42	166.05	180.34	187.97	177.25	164.40	162.41	180.73	179.37	152.42					
May 2008	160.02	167.59	156.05		166.20	174.84	188.97	187.00	192.95	172.55	170.02	178.97	185.94	158.76					
Jun 2008	170.55	168.90	157.80		170.95	179.98	187.29	179.30	189.30	172.69	164.87	181.54	184.26	161.64					
Jul 2008	179.48	172.37	158.28		174.67	176.96	205.68	173.77	176.77	189.26	172.64	170.20	193.47	162.52					

	Urban Markets													Rural Markets				Phnom Penh Basic
Province	Battambang	Kompong Cham	Kompong Chhnang	Kompong Thom	Kampot	Kratie	Prey Veng	Ratanakkiri	Siem Reap	Svay Rieng	Kompong Speu	Kandal	Takeo					
Number	02	03	04	06	07	10	14	16	17	20	05	08	21					
Market type	Urban	Urban	Urban	Urban	Urban	Urban	Urban	Urban	Urban	Urban	Rural	Rural	Rural	Urban				
Population share (%)	7.62	2.93	2.19	3.19	1.85	3.80	2.71	0.91	6.66	1.08	5.83	10.38	7.74	5.83				
Aug 2008	184.11	165.42	156.70		161.30	184.98	194.47	173.53	176.11	178.70	178.24	170.39	194.01	161.11				
Sep 2008	175.77	171.27	161.49		168.98	165.83	187.79	172.68	165.29	171.90	155.91	169.24	204.65	160.97				
Oct 2008	178.94	153.39	161.49		171.98	169.28	185.55	178.70	162.37	170.56	156.03	168.24	189.91	157.20				
Nov 2008	147.32	144.84	157.52		146.68	176.47	170.44	183.34	161.46	159.29	148.58	163.33	166.93	147.47				
Dec 2008	140.04	146.98	144.12		142.92	160.35	160.26	165.29	137.97	147.21	154.85	162.63	144.98	135.76				
Jan 2009	137.32	130.19	133.76		147.09	152.41	156.62	143.45	149.50	148.35	145.90	144.46	147.38	128.38				
Feb 2009	127.89	128.41	131.57		142.19	132.78	154.60	144.29	146.01	147.17	149.58	147.21	144.03	128.88				
Mar 2009	127.82	127.24	130.42		139.36	134.69	154.07	127.75	147.05	149.49	152.64	150.93	148.45	131.21				
Apr 2009	130.37	131.11	134.75		135.69	138.98	152.53	136.30	138.71	149.99	148.53	150.05	152.30	133.47				
May 2009	142.26	129.54	132.51		135.96	148.39	146.38	153.06	148.31	147.79	149.28	166.46	156.69	136.50				
Jun 2009	142.71	138.12	134.12		139.98	147.75	145.46	136.08	155.65	143.28	159.56	162.37	159.76	139.70				
Jul 2009	144.66	138.61	134.12		149.19	142.76		133.14	152.27	146.41	155.00	149.25	158.48	142.07				
Aug 2009	145.38	151.29	147.57		142.84	140.62		130.74	151.54	150.23	157.59	150.61	161.80	144.13				
Sep 2009	150.82	145.59	144.58		156.62	148.71		136.75	156.68	152.85	149.21	154.71	185.63	145.13				
Oct 2009	153.48	143.44	148.35		148.19	141.86		132.01	149.73	153.34	158.52	153.37	181.99	145.42				
Nov 2009	148.92	144.58	143.14		139.27	140.00		135.81	147.03	143.99	154.11	149.22	146.81	144.57				
Dec2 009	143.04	140.67	141.27		133.14	141.03		137.01	149.42	150.42	155.92	149.22	151.20	142.83				

## Appendix 11:

### *Part B: National Basic Price Indices and Phnom Penh National Institute of Statistics Consumer Price Index 1993–2009*

*Base: October–December 2006 = 100*

	National Basic Price Indices				Phnom Penh
Index	Urban less Phnom Penh Urban	Rural	Provincial	National	
Index type	Basic	Basic	Basic	Basic	Urban_NIS
<b>Population share (%)</b>	<b>10.58</b>	<b>83.59</b>	<b>94.17</b>		<b>5.83</b>
Jul 1993	51.93	53.37	53.21	52.63	38.36
Aug 1993	48.26	49.38	49.25	48.84	38.52
Sep 1993	49.33	49.82	49.77	49.42	40.52
Oct 1993	48.13	45.88	46.16	45.88	38.80
Nov 1993	45.60	41.95	42.39	42.29	39.32
Dec 1993	42.17	40.86	41.03	40.78	34.47
Jan 1994	43.19	39.95	40.34	40.13	34.63
Feb 1994	43.76	38.22	38.89	38.74	34.72
Mar 1994	44.97	43.57	43.75	43.39	34.27
Apr 1994	50.41	45.42	46.02	45.64	36.19
May 1994	50.89	47.17	47.63	47.18	36.11
Jun 1994	50.15	48.94	49.09	48.56	35.48
Jul 1994	52.62	49.63	49.99	49.48	36.79
Aug 1994	56.82	51.18	51.86	51.43	40.52
Sep 1994	56.35	50.05	50.81	50.41	40.26
Oct 1994	53.95	51.77	52.04	51.68	42.57
Nov 1994	53.03	52.83	52.87	52.46	42.27
Dec 1994	51.29	53.03	52.83	52.44	42.42
Jan 1995	49.52	51.88	51.61	51.24	41.76
Feb 1995	49.08	46.97	47.23	47.07	42.94
Mar 1995	49.71	46.26	46.68	46.50	41.73
Apr 1995	48.81	46.55	46.83	46.61	40.84
May 1995	49.64	46.92	47.25	47.01	40.69
Jun 1995	51.40	52.16	52.08	51.70	42.17
Jul 1995	53.28	54.68	54.53	54.11	43.62
Aug 1995	54.57	54.75	54.74	54.36	44.73
Sep 1995	56.84	57.43	57.37	56.99	47.39
Oct 1995	57.21	58.28	58.16	57.80	48.67
Nov 1995	55.15	55.32	55.31	55.03	47.60
Dec 1995	52.25	56.21	55.75	55.38	46.10
Jan 1996	53.67	57.28	56.86	56.51	47.38
Feb 1996	54.08	54.71	54.64	54.43	48.82
Mar 1996	53.54	55.82	55.56	55.26	47.45
Apr 1996	54.43	56.74	56.47	56.13	47.39
May 1996	55.10	56.08	55.98	55.64	47.03
Jun 1996	56.75	56.16	56.24	55.88	46.74
Jul 1996	57.43	56.24	56.39	56.07	47.77

	National Basic Price Indices				
Index	Urban <i>less</i> Phnom Penh Urban	Rural	Provincial	National	Phnom Penh
Index type	Basic	Basic	Basic	Basic	Urban_NIS
Population share (%)	10.58	83.59	94.17		5.83
Aug 1996	59.59	57.56	57.81	57.49	49.02
Sep 1996	58.40	59.23	59.15	58.77	49.25
Oct 1996	60.34	61.28	61.18	60.89	53.33
Nov 1996	60.95	61.85	61.76	61.44	53.25
Dec 1996	58.82	58.52	58.57	58.36	52.94
Jan 1997	56.75	57.81	57.70	57.45	50.88
Feb 1997	55.83	55.93	55.93	55.72	50.06
Mar 1997	55.14	54.99	55.02	54.85	50.30
Apr 1997	57.90	56.74	56.89	56.69	51.38
May 1997	59.21	57.05	57.31	57.12	51.97
Jun 1997	59.44	56.96	57.26	57.10	52.58
Jul 1997	60.65	66.64	65.95	65.56	55.69
Aug 1997	63.85	63.55	63.60	63.28	54.98
Sep 1997	66.12	67.36	67.23	66.85	57.25
Oct 1997	67.58	64.33	64.73	64.48	57.74
Nov 1997	65.55	60.57	61.17	61.01	56.42
Dec 1997	63.81	61.69	61.95	61.74	55.97
Jan 1998	63.57	60.81	61.15	60.99	56.52
Feb 1998	64.49	59.70	60.28	60.18	57.17
Mar 1998	65.70	62.26	62.68	62.47	56.83
Apr 1998	68.58	65.87	66.21	65.86	56.96
May 1998	74.93	66.60	67.60	67.33	60.01
Jun 1998	76.74	71.19	71.86	71.53	62.97
Jul 1998	77.66	73.16	73.71	73.43	65.95
Aug 1998	79.99	70.47	71.62	71.32	63.45
Sep 1998	81.43	71.74	72.91	72.66	66.02
Oct 1998	78.45	71.15	72.03	71.82	66.06
Nov 1998	79.00	67.63	68.99	68.89	65.68
Dec 1998	79.34	70.11	71.22	71.00	65.16
Jan 1999	76.16	66.55	67.72	67.54	62.32
Feb 1999	74.95	68.09	68.93	68.73	63.19
Mar 1999	74.94	66.74	67.74	67.55	62.25
Apr 1999	75.61	69.31	70.08	69.85	63.67
May 1999	75.36	67.92	68.83	68.71	65.01
Jun 1999	76.41	70.33	71.07	70.89	65.72
Jul 1999	77.22	68.36	69.45	69.34	66.17
Aug 1999	75.61	72.29	72.70	72.48	66.40
Sep 1999	76.73	72.68	73.17	72.97	67.09
Oct 1999	74.40	70.60	71.07	70.92	66.61
Nov 1999	72.51	67.87	68.44	68.41	67.28
Dec 1999	74.44	67.74	68.57	68.52	66.87



	National Basic Price Indices				
Index	Urban <i>less</i> Phnom Penh Urban	Rural	Provincial	National	Phnom Penh
Index type	Basic	Basic	Basic	Basic	Urban_NIS
Population share (%)	10.58	83.59	94.17		5.83
Jan 2000	71.63	68.48	68.87	68.76	65.20
Feb 2000	70.04	69.36	69.44	69.30	64.97
Mar 2000	68.69	67.31	67.48	67.44	65.85
Apr 2000	71.35	69.56	69.78	69.64	65.39
May 2000	71.97	67.70	68.23	68.09	63.97
Jun 2000	70.77	66.25	66.82	66.74	64.26
Jul 2000	73.14	70.36	70.71	70.54	65.57
Aug 2000	74.67	71.73	72.10	71.92	66.84
Sep 2000	75.76	71.84	72.33	72.24	69.60
Oct 2000	76.62	75.55	75.69	75.56	71.89
Nov 2000	75.05	74.56	74.63	74.45	69.16
Dec 2000	70.72	70.49	70.52	70.43	67.77
Jan 2001	69.67	68.58	68.71	68.61	65.68
Feb 2001	69.21	67.26	67.51	67.43	65.15
Mar 2001	67.65	65.34	65.63	65.61	65.03
Apr 2001	69.42	66.03	66.45	66.43	65.84
May 2001	69.53	69.08	69.13	68.93	62.94
Jun 2001	70.31	68.77	68.96	68.76	62.88
Jul 2001	71.30	69.32	69.57	69.34	62.52
Aug 2001	72.50	68.97	69.42	69.26	64.52
Sep 2001	73.74	68.00	68.73	68.63	65.92
Oct 2001	73.05	68.46	69.03	68.93	65.98
Nov 2001	69.30	66.49	66.84	66.77	64.54
Dec 2001	68.21	67.82	67.87	67.75	64.30
Jan 2002	68.57	65.69	66.05	65.99	64.08
Feb 2002	68.86	65.61	66.02	65.97	64.42
Mar 2002	68.08	69.67	69.47	69.30	64.44
Apr 2002	70.85	68.53	68.82	68.72	65.66
May 2002	71.41	70.56	70.67	70.47	64.55
Jun 2002	70.81	70.55	70.58	70.39	64.81
Jul 2002	76.60	68.26	69.31	69.21	66.38
Aug 2002	78.52	72.30	73.09	72.92	67.91
Sep 2002	79.12	71.93	72.84	72.70	68.70
Oct 2002	77.73	71.77	72.52	72.37	68.02
Nov 2002	74.07	73.13	73.24	73.07	67.98
Dec 2002	71.74	70.53	70.68	70.59	67.92
Jan 2003	72.15	69.06	69.45	69.40	67.99
Feb 2003	71.42	69.86	70.06	70.05	69.95
Mar 2003	72.03	69.52	69.83	69.84	69.95
Apr 2003	71.98	70.42	70.62	70.60	70.07
May 2003	73.03	70.59	70.89	70.83	68.83

	National Basic Price Indices				
Index	Urban <i>less</i> Phnom Penh Urban	Rural	Provincial	National	Phnom Penh
Index type	Basic	Basic	Basic	Basic	Urban_NIS
Population share (%)	10.58	83.59	94.17		5.83
Jun 2003	74.48	73.55	73.67	73.50	68.44
Jul 2003	73.97	72.25	72.47	72.34	68.68
Aug 2003	73.51	70.50	70.88	70.83	69.56
Sep 2003	74.78	69.93	70.54	70.51	69.61
Oct 2003	72.46	73.14	73.06	72.94	69.57
Nov 2003	73.57	74.88	74.71	74.53	69.22
Dec 2003	73.10	71.48	71.68	71.59	68.93
Jan 2004	75.45	72.85	73.18	73.07	69.83
Feb 2004	76.06	70.96	71.60	71.57	70.53
Mar 2004	75.70	77.71	77.46	77.27	71.83
Apr 2004	79.40	74.66	75.26	75.17	72.63
May 2004	83.74	79.42	79.96	79.76	73.81
Jun 2004	84.71	83.02	83.23	82.98	75.66
Jul 2004	89.29	87.12	87.39	87.15	79.94
Aug 2004	97.91	87.88	89.14	88.93	82.59
Sep 2004	94.90	88.43	89.24	89.04	83.10
Oct 2004	92.01	88.53	88.97	88.67	79.83
Nov 2004	90.64	79.28	80.72	80.65	78.75
Dec 2004	87.69	81.77	82.52	82.39	78.45
Jan 2005	86.17	79.00	79.79	79.60	76.71
Feb 2005	86.31	80.74	81.36	81.01	75.86
Mar 2005	86.64	82.82	83.25	82.83	76.79
Apr 2005	89.45	86.37	86.71	86.27	79.95
May 2005	93.65	91.13	91.41	90.75	81.41
Jun 2005	95.49	90.32	90.89	90.58	86.17
Jul 2005	96.03	93.40	93.69	93.25	87.30
Aug 2005	97.24	96.31	96.42	95.99	90.35
Sep 2005	101.27	93.53	94.39	94.26	92.63
Oct 2005	97.86	90.77	91.56	91.65	92.96
Nov 2005	95.56	88.47	89.26	89.48	92.39
Dec 2005	94.96	90.10	90.64	90.72	91.79
Jan 2006	97.24	85.78	87.06	87.43	92.12
Feb 2006	94.71	87.91	88.67	88.87	91.36
Mar 2006	95.01	88.48	89.21	89.36	91.13
Apr 2006	98.71	97.71	97.82	97.39	92.16
May 2006	98.29	96.76	96.93	96.71	94.19
Jun 2006	101.37	93.68	94.54	94.59	95.26
Jul 2006	102.74	94.09	95.06	95.32	98.50
Aug 2006	104.54	97.61	98.39	98.63	101.52
Sep 2006	106.19	100.49	101.13	101.22	102.40
Oct 2006	103.30	99.64	100.05	100.16	101.53

	National Basic Price Indices				
Index	Urban <i>less</i> Phnom Penh Urban	Rural	Provincial	National	Phnom Penh
Index type	Basic	Basic	Basic	Basic	Urban_NIS
Population share (%)	10.58	83.59	94.17		5.83
Nov 2006	98.43	101.32	101.00	100.92	100.13
Dec 2006	98.28	99.05	98.96	98.92	98.48
Jan 2007	98.38	101.60	101.24	101.08	99.36
Feb 2007	97.96	102.98	102.41	102.22	100.14
Mar 2007	100.31	104.67	104.18	103.86	100.42
Apr 2007	104.76	109.18	108.68	108.02	100.89
May 2007	104.14	111.42	110.60	109.74	100.37
Jun 2007	109.49	110.59	110.46	109.89	103.68
Jul 2007	116.10	114.73	114.88	114.29	107.87
Aug 2007	119.15	119.74	119.67	118.89	110.38
Sep 2007	120.00	124.83	124.28	123.33	112.91
Oct 2007	123.67	127.13	126.74	125.89	116.57
Nov 2007	124.61	131.67	130.88	129.65	116.33
Dec 2007	127.81	134.60	133.84	132.50	117.97
Jan 2008	130.64	137.75	136.95	135.78	123.07
Feb 2008	136.21	140.42	139.94	138.80	126.37
Mar 2008	152.41	168.85	167.00	165.24	146.14
Apr 2008	165.19	175.63	174.45	172.59	152.42
May 2008	173.60	178.95	178.35	176.70	158.76
Jun 2008	176.20	178.18	177.95	176.58	161.64
Jul 2008	177.47	178.36	178.26	176.93	162.52
Aug 2008	176.04	180.04	179.59	178.03	161.11
Sep 2008	170.82	177.31	176.58	175.27	160.97
Oct 2008	168.63	172.14	171.75	170.52	157.20
Nov 2008	156.08	160.74	160.22	159.14	147.47
Dec 2008	144.76	154.93	153.78	152.27	135.76
Jan 2009	142.49	145.77	145.40	143.97	128.38
Feb 2009	136.76	146.78	145.65	144.24	128.88
Mar 2009	136.24	150.56	148.95	147.46	131.21
Apr 2009	135.95	150.39	148.76	147.48	133.47
May 2009	141.89	158.92	157.00	155.28	136.50
Jun 2009	144.83	160.81	159.01	157.38	139.70
Jul 2009	135.98	153.70	151.71	150.90	142.07
Aug 2009	138.30	156.01	154.02	153.18	144.13
Sep 2009	141.75	163.33	160.89	159.57	145.13
Oct 2009	139.43	163.95	161.19	159.86	145.42
Nov 2009	136.45	149.69	148.19	147.89	144.57
Dec 2009	134.63	151.57	149.66	149.08	142.83

## Appendix 12: Phnom Penh Basic Consumer Price Index: Commodities used in 1994 and 2000 base indices

Items used in the Phnom Penh basic consumer price indices with 1994 and 2000 bases compared to those used in the CDRI provincial basic consumer price indices

CDRI Provincial Indices			NIS Phnom Penh CPI					
			1994 base			2000 base		
Item No.	Items	Unit	Item No.	Name	Unit	Item No.	Name	Unit
1	Riel/USD exchange rate	riels/USD						
2	Gold	riels/chi						
3	Rice ( <i>Phkar Knhei</i> )	riels/kg	002	Rice Quality #2	kg	002	Rice Quality #2	kg
4	<b>Meat, Poultry, Fish</b>							
a.	Fresh fish ( <i>Trey Ros</i> )	riels/kg	015	Mud fish (large)	kg	015	Mud fish (large)	kg
b.	Pork, 1 <sup>st</sup> quality	riels/kg	009	Pork without fat	kg	009	Pork without fat	kg
c.	Beef, 1 <sup>st</sup> quality	riels/kg	011	Beef No. 1	kg	011	Beef No. 1	kg
5	Palm sugar	riels/kg	064	Brown sugar	kg	073	Brown sugar	kg
6	<b>Vegetables</b>							
a.	Cucumbers	riels/kg	039	Cucumbers	kg	042	Cucumbers	kg
b.	Wax gourds	riels/gourd	041	Ridge gourds	kg	044	Ridge gourds	kg
7	Bananas ( <i>Namva</i> )	riels/hand	053	Bananas	hand (medium)	058	Bananas	hand (medium)
8	Thai sarong	riels/sarong	091	Sarong	piece	100	Sarong	piece
9	<b>Fuel</b>							
a.	Charcoal	riels/sack	132	Charcoal	kg	145	Charcoal	kg
b.	Kerosene	riels/ℓ	130	Liquid fuels (kerosene)	litre	143	Liquid fuels (kerosene)	litre
10	Gasoline	riels/ℓ	171	Gasoline	litre	192	Gasoline	litre
<b>Description</b>		<b>Items</b>	<b>Items</b>			<b>Items</b>		
Food		8	78			87		
Food, beverages & tobacco		8	87			96		
All items		12	206			227		

### Appendix 13: Phnom Penh Basic Consumer Price Index–Commodities Used in 2006 Base Index

Items used in the Phnom Penh basic consumer price index with a 2006 base, compared to those used in the CDRI provincial basic consumer price indices

CDRI Provincial Indices		NIS Phnom Penh CPI 2006 base					
Item No.	Items	Item ID	Item ID name	Coicop	Coicop name	Used	Unique category
1	Riel/USD exchange rate						
2	Gold						
3	Rice ( <i>Phkar Knhei</i> )	101101	Rice, quality no. 2 White, Neang-Menh, Battambang	01.1.1.1	Rice	Item	Unique
4	<b>Meat, Poultry, Fish</b>						
a.	Fresh fish ( <i>Trey Ros</i> )	118001	Mud fish (large)	01.1.3.1	Fish (fresh)	Coicop	
b.	Pork, 1 <sup>st</sup> quality	109001	Pork without fat	01.1.2.1	Pork (fresh)	Coicop	
c.	Beef, 1 <sup>st</sup> quality	110001	Beef no.1	01.1.2.2	Beef (fresh)	Coicop	Unique
5	Palm sugar	145101	Brown sugar	01.1.8.1	Sugar, jam, honey, chocolate and confectionery	Coicop	
6	<b>Vegetables</b>						
a.	Cucumbers	137501	Cucumbers	01.1.7.2	Fruit vegetables	Coicop	
b.	Wax gourds	137201	Ridge gourds	01.1.7.2	Fruit vegetables	Coicop	
7	Bananas ( <i>Namva</i> )	128001	Banana	01.1.6.1	Fresh fruits	Coicop	
8	Thai sarong	304003	Sarong	03.1.1.1	Clothing materials	Coicop	
9	<b>Fuel</b>						
a.	Charcoal	330101	Charcoal	04.5.4.1	Solid fuels	Coicop	
b.	Kerosene	329001	Liquid fuels (kerosene )	04.5.3.1	Liquid fuels	Coicop	Unique
10	Gasoline	506001	Gasoline	07.2.2.1	Fuels and lubricants for personal transport equipment	Item	Unique

## CDRI Working Paper Series

- 1) Kannan, K.P. (November 1995), *Construction of a Consumer Price Index for Cambodia: A Review of Current Practices and Suggestions for Improvement*.
- 2) McAndrew, John P. (January 1996), *Aid Infusions, Aid Illusions: Bilateral and Multilateral Emergency and Development Assistance in Cambodia*. 1992-1995.
- 3) Kannan, K.P. (January 1997), *Economic Reform, Structural Adjustment and Development in Cambodia*.
- 4) Chim Charya, Srun Pithou, So Sovannarith, John McAndrew, Nguon Sokunthea, Pon Dorina & Robin Biddulph (June 1998), *Learning from Rural Development Programmes in Cambodia*.
- 5) Kato, Toshiyasu, Chan Sophal & Long Vou Piseth (September 1998), *Regional Economic Integration for Sustainable Development in Cambodia*.
- 6) Murshid, K.A.S. (December 1998), *Food Security in an Asian Transitional Economy: The Cambodian Experience*.
- 7) McAndrew, John P. (December 1998), *Interdependence in Household Livelihood Strategies in Two Cambodian Villages*.
- 8) Chan Sophal, Martin Godfrey, Toshiyasu Kato, Long Vou Piseth, Nina Orlova, Per Ronnås & Tia Savora (January 1999), *Cambodia: The Challenge of Productive Employment Creation*.
- 9) Teng You Ky, Pon Dorina, So Sovannarith & John McAndrew (April 1999), *The UNICEF/Community Action for Social Development Experience—Learning from Rural Development Programmes in Cambodia*.
- 10) Gorman, Siobhan, with Pon Dorina & Sok Kheng (June 1999), *Gender and Development in Cambodia: An Overview*.
- 11) Chan Sophal & So Sovannarith (June 1999), *Cambodian Labour Migration to Thailand: A Preliminary Assessment*.
- 12) Chan Sophal, Toshiyasu Kato, Long Vou Piseth, So Sovannarith, Tia Savora, Hang Chuon Naron, Kao Kim Hourn & Chea Vuthna (September 1999), *Impact of the Asian Financial Crisis on the SEATEs: The Cambodian Perspective*.
- 13) Ung Bunleng, (January 2000), *Seasonality in the Cambodian Consumer Price Index*.
- 14) Toshiyasu Kato, Jeffrey A. Kaplan, Chan Sophal & Real Sopheap (May 2000), *Enhancing Governance for Sustainable Development*.
- 15) Godfrey, Martin, Chan Sophal, Toshiyasu Kato, Long Vou Piseth, Pon Dorina, Tep Saravy, Tia Savara & So Sovannarith (August 2000), *Technical Assistance and Capacity Development in an Aid-dependent Economy: the Experience of Cambodia*.
- 16) Sik Boreak, (September 2000), *Land Ownership, Sales and Concentration in Cambodia*.
- 17) Chan Sophal, & So Sovannarith, with Pon Dorina (December 2000), *Technical Assistance and Capacity Development at the School of Agriculture Prek Leap*.
- 18) Godfrey, Martin, So Sovannarith, Tep Saravy, Pon Dorina, Claude Katz, Sarthi Acharya, Sisowath D. Chanto & Hing Thoraxy (August 2001), *A Study of the Cambodian Labour Market: Reference to Poverty Reduction, Growth and Adjustment to Crisis*.
- 19) Chan Sophal, Tep Saravy & Sarthi Acharya (October 2001), *Land Tenure in Cambodia: a Data Update*.
- 20) So Sovannarith, Real Sopheap, Uch Utey, Sy Rathmony, Brett Ballard & Sarthi Acharya (November 2001), *Social Assessment of Land in Cambodia: A Field Study*.
- 21) Bhargavi Ramamurthy, Sik Boreak, Per Ronnås and Sok Hach (December 2001), *Cambodia 1999-2000: Land, Labour and Rural Livelihood in Focus*.

- 22) Chan Sophal & Sarthi Acharya (July 2002), *Land Transactions in Cambodia: An Analysis of Transfers and Transaction Records*.
- 23) McKenney, Bruce & Prom Tola. (July 2002), *Natural Resources and Rural Livelihoods in Cambodia*.
- 24) Kim Sedara, Chan Sophal & Sarthi Acharya (July 2002), *Land, Rural Livelihoods and Food Security in Cambodia*.
- 25) Chan Sophal & Sarthi Acharya (December 2002), *Facing the Challenge of Rural Livelihoods: A Perspective from Nine Villages in Cambodia*.
- 26) Sarthi Acharya, Kim Sedara, Chap Sotharith & Meach Yady (February 2003), *Off-farm and Non-farm Employment: A Perspective on Job Creation in Cambodia*.
- 27) Yim Chea & Bruce McKenney (October 2003), *Fish Exports from the Great Lake to Thailand: An Analysis of Trade Constraints, Governance, and the Climate for Growth*.
- 28) Prom Tola & Bruce McKenney (November 2003), *Trading Forest Products in Cambodia: Challenges, Threats, and Opportunities for Resin*.
- 29) Yim Chea & Bruce McKenney (November 2003), *Domestic Fish Trade: A Case Study of Fish Marketing from the Great Lake to Phnom Penh*.
- 30) Hughes, Caroline & Kim Sedara with the assistance of Ann Sovatha (February 2004), *The Evolution of Democratic Process and Conflict Management in Cambodia: A Comparative Study of Three Cambodian Elections*.
- 31) Oberndorf, Robert B. (May 2004), *Law Harmonisation in Relation to the Decentralisation Process in Cambodia*.
- 32) Murshid, K.A.S. & Tuot Sokphally (April 2005), *The Cross Border Economy of Cambodia: An Exploratory Study*.
- 33) Hansen, Kasper K. & Neth Top (December 2006), *Natural Forest Benefits and Economic Analysis of Natural Forest Conversion in Cambodia*.
- 34) Pak Kimchoeun, Horng Vuthy, Eng Netra, Ann Sovatha, Kim Sedara, Jenny Knowles & David Craig (March 2007), *Accountability and Neo-patrimonialism in Cambodia: A Critical Literature Review*.
- 35) Kim Sedara & Joakim Öjendal with the assistance of Ann Sovatha (May 2007), *Where Decentralisation Meets Democracy: Civil Society, Local Government, and Accountability in Cambodia*.
- 36) Lim Sovannara (November 2007), *Youth Migration and Urbanisation in Cambodia*.
- 37) Chem Phalla *et al.* (May 2008), *Framing Research on Water Resources Management and Governance in Cambodia: A Literature Review*.
- 38) Pak Kimchoeun and David Craig (July 2008), *Accountability and Public Expenditure Management in Decentralised Cambodia*.
- 39) Horng Vuthy and David Craig (July 2008), *Accountability and Planning in Decentralised Cambodia*.
- 40) Eng Netra and David Craig (March 2009), *Accountability and Human Resource Management in Decentralised Cambodia*.
- 41) Hing Vutha and Hossein Jalilian (April 2009), *The Environmental Impacts of the ASEAN-China Free Trade Agreement for Countries in the Greater Mekong Sub-region*.
- 42) Thon Vimealea, Ou Sivhuoch, Eng Netra and Ly Tem (October 2009), *Leadership in Local Politics of Cambodia: A Study of Leaders in Three Communes of Three Provinces*.
- 43) Hing Vutha and Thun Vathana (December 2009), *Agricultural Trade in the Greater Mekong Sub-region: The Case of Cassava and Rubber in Cambodia*.
- 44) Chan Sophal (December 2009), *Costs and Benefits of Cross-border Labour Migration in the GMS: Cambodia Country Study*.



- 45) CDRI Publication (December 2009), *Costs and Benefits of Cross-country Labour Migration in the GMS: Synthesis of the Case Studies in Thailand, Cambodia, Laos and Vietnam.*
- 46) CDRI Publication (December 2009), *Agricultural Trade in the Greater Mekong Sub-region: Synthesis of the Case Studies on Cassava and Rubber Production and Trade in GMS Countries.*
- 47) Chea Chou (August 2010), *The Local Governance of Common Pool Resources: The Case of Irrigation Water in Cambodia.*
- 48) CDRI Publication (August 2010), *Empirical Evidence of Irrigation Management in the Tonle Sap Basin: Issues and Challenges.*
- 49) Chem Phalla and Someth Paradis (March 2011), *Use of Hydrological Knowledge and Community Participation for Improving Decision-making on Irrigation Water Allocation.*
- 50) Pak Kimchoeun (May 2011), *Fiscal Decentralisation in Cambodia: A Review of Progress and Challenges.*
- 51) Christopher Wokker, Paulo Santos, Ros Bansok and Kate Griffiths (June 2011), *Irrigation Water Productivity in Cambodian Rice System.*
- 52) Ouch Chandarany, Saing Chanhang and Phann Dalis (June 2011), *Assessing China's Impact on Poverty Reduction In the Greater Mekong Sub-region: The Case of Cambodia.*
- 53) Chann Sopheap, Nathan Wales and Tim Frewer (August 2011), *An Investigation of Land Cover and Land Use Change in Stung Chrey Bak Catchment, Cambodia.*
- 54) Nang Phirun, Khiev Daravy, Philip Hirsch and Isabelle Whitehead (June), *Improving the Governance of Water Resources in Cambodia: A Stakeholder Analysis.*
- 55) Kem Sothorn, Chhim Chhun, Theng Vuthy and So Sovannarith (July 2011), *Policy Coherence in Agricultural and Rural Development: Cambodia.*
- 56) Tong Kimsun, Hem Sochet and Paulos Santos (July 2011), *What Limits Agricultural Intensification in Cambodia? The role of emigration, agricultural extension services and credit constraints.*
- 57) Tong Kimsun, Hem Sochet and Paulos Santos (August 2011), *The Impact of Irrigation on Household Assets.*
- 58) Hing Vutha, Lun Pide and Phann Dalis (August 2011), *Irregular Migration from Cambodia: Characteristics, Challenges and Regulatory Approach.*
- 59) Chem Phalla, Philip Hirsch and Someth Paradis (September 2011), *Hydrological Analysis in Support of Irrigation Management: A Case Study of Stung Chrey Bak Catchment, Cambodia.*
- 60) Saing Chan Hang, Hem Sochet and Ouch Chandarany with Phann Dalis and Pon Dorina (November 2011), *Foreign Investment in Agriculture in Cambodia*
- 61) Ros Bandeth, Ly Tem and Anna Thompson (September 2011), *Catchment Governance and Cooperation Dilemmas: A Case Study from Cambodia.*
- 62) Chea Chou, Nang Phirun, Isabelle Whitehead, Phillip Hirsch and Anna Thompson (October 2011), *Decentralised Governance of Irrigation Water in Cambodia: Matching Principles to Local Realities.*
- 63) Heng Seiha, Kim Sedara and So Sokbunthoeun (October 2011), *Decentralised Governance in Hybrid Polity: Localisation of Decentralisation Reform in Cambodia*
- 64) Tong Kimsun and Sry Bopharath (November 2011), *Poverty and Environment Links: The Case of Rural Cambodia.*
- 65) Ros Bansok, NANG Phirun and CHHIM Chhun (December 2011), *Agricultural Development and Climate Change: The Case of Cambodia*
- 66) TONG Kimsun (February 2012), *Analysing Chronic Poverty in Rural Cambodia Evidence from Panel Data*









**CDRI - Cambodia's leading  
independent development policy research institute**

📍 56 Street 315, Tuol Kork

✉ PO Box 622, Phnom Penh, Cambodia

☎ (855-23) 881-384/881-701/881-916/883-603

📠 (855-23) 880-734

E-mail: [cdri@cdri.org.kh](mailto:cdri@cdri.org.kh)

Website: <http://www.cdri.org.kh>

Price: USD 3.00

